



HANSON PROFESSIONAL SERVICES INC.
 815 Commerce Drive, Suite 200
 Oak Brook, Illinois 60523
 Telephone: 630.990.3800
 Fax: 630.990.3801

Illinois Professional Design Firm
 Registration No. 184-001084

© Copyright Hanson Professional Service Inc. 2007

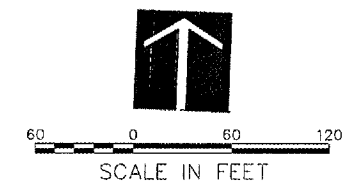
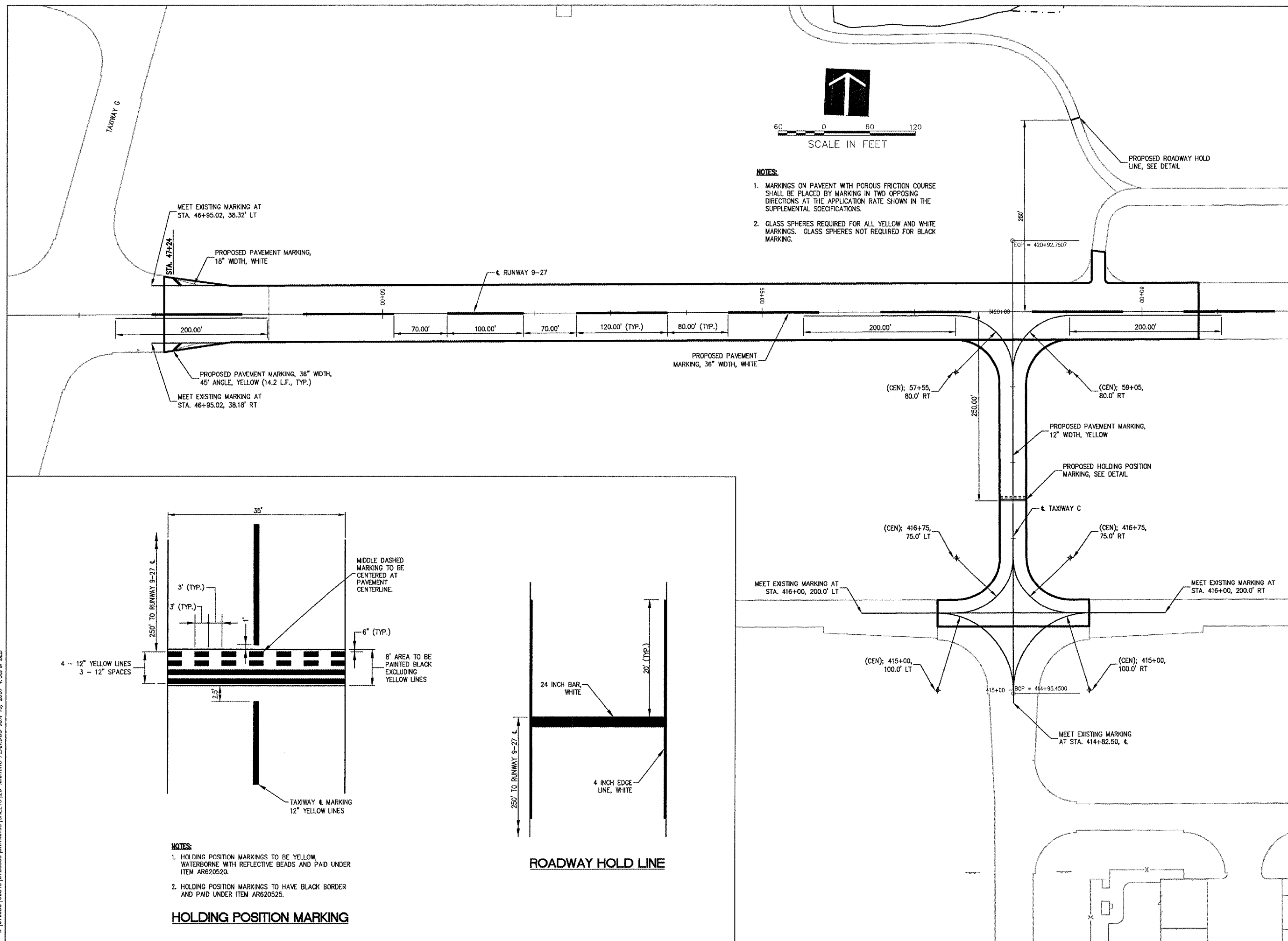


JOLIET REGIONAL PORT DISTRICT

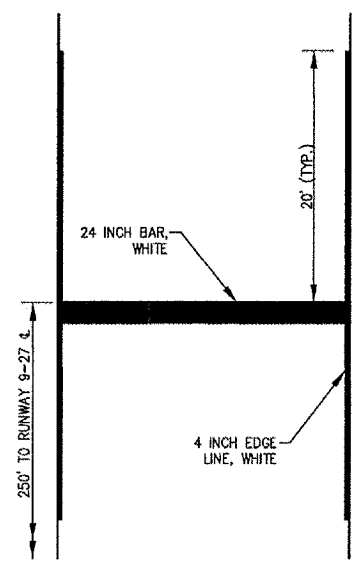
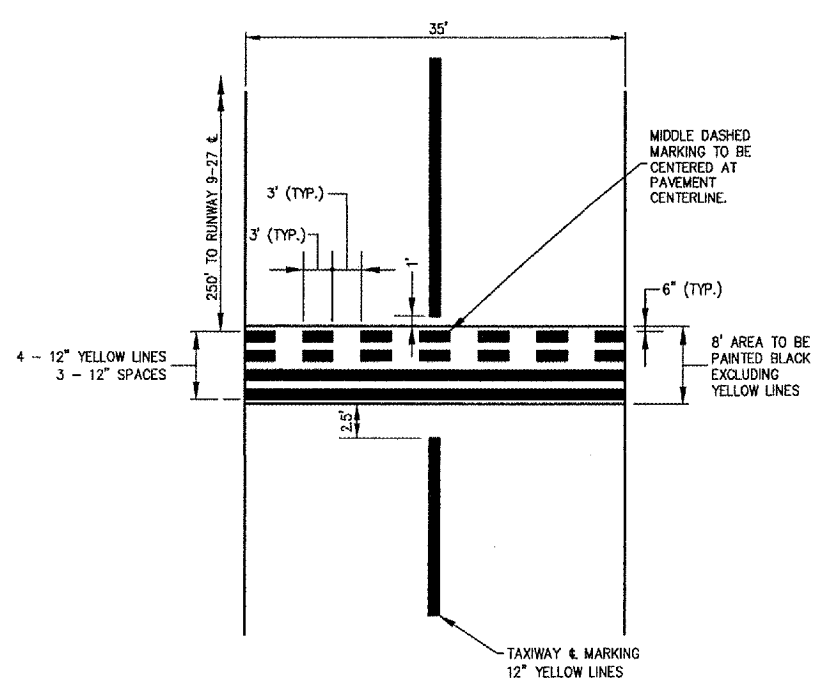
1 George Michas Drive
 Romeoville, Illinois 60446
 Telephone: 815.838.9497
 Fax: 815.838.9524

REMOVE AND REPLACE PORTIONS OF RUNWAY 9-27 AND TAXIWAY C

**AIP PROJECT NO. 3-17-0140-B41
 IDA PROJECT NO. LOT-3709**



- NOTES:**
- MARKINGS ON PAVEMENT WITH POROUS FRICTION COURSE SHALL BE PLACED BY MARKING IN TWO OPPOSING DIRECTIONS AT THE APPLICATION RATE SHOWN IN THE SUPPLEMENTAL SPECIFICATIONS.
 - GLASS SPHERES REQUIRED FOR ALL YELLOW AND WHITE MARKINGS. GLASS SPHERES NOT REQUIRED FOR BLACK MARKING.



- NOTES:**
- HOLDING POSITION MARKINGS TO BE YELLOW WATERBORNE WITH REFLECTIVE BEADS AND PAID UNDER ITEM AR620520.
 - HOLDING POSITION MARKINGS TO HAVE BLACK BORDER AND PAID UNDER ITEM AR620525.

HOLDING POSITION MARKING

No.	Drawing Issue Description	Date	By

Date: JUNE 18, 2007
 Sheet Title

MARKING PLAN AND DETAILS

840-0788053
 Project Number

LDH	06/04/07
Layout By	Date
LDH	06/04/07
Designed By	Date
RMH	06/18/07
Reviewed By	Date
LDH	
Drawn By	

25

I:\072005\00940\072005\DRAWINGS\25-MARKING PLAN\DWG JUN 19, 2007 4:38PM BLD