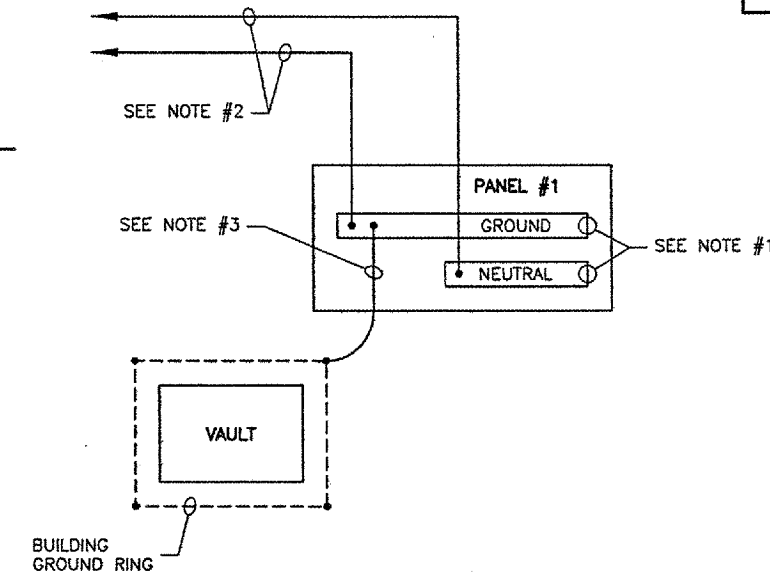


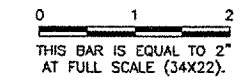
GROUNDING AND NEUTRAL WIRING NOTES

1. DO NOT BOND NEUTRAL AND GROUND BARS IN PANEL.
2. TO EXISTING ATS IN GENERATOR SHELTER.
3. #2 IN 1/2" PVC CONDUIT.



SYSTEM GROUNDING AND NEUTRAL WIRING

REVISIONS		
NUMBER	BY	DATE



PANEL SCHEDULE																	
PANEL DESIGNATION:		PANEL #1		BOND NEUTRAL AND GROUND BAR: NO						TYPE: CROUSE-HINDS I-LINE							
LOCATION:		VAULT		SHORT CIRCUIT RATING: 10,000 A						POLE: 30							
VOLTS: 240 / 120				WIRE: 4				AMPS: 400									
PHASE: THREE				MOUNTING: SURFACE				MAIN CIRCUIT BREAKER: 400A									
CKT NO.	LOAD	BREAKER SIZE	LOAD AMPS	USAGE FACTOR	PHASE AMPS (USAGE)			POLE NO.	PHASE AMPS (USAGE)			USAGE FACTOR	LOAD AMPS	BREAKER SIZE	LOAD	CKT NO.	
					A	B	C		A	B	C						
1	RWY 03/21 REGULATOR, 30KW	175A-2P	137	0.75	102.75			1	2	35			0.5	70	90A-2P	TXY CKT #1 REGULATOR, 15KW	2
5	RWY 18/34 REGULATOR, 15KW	90A-2P	70	0.75		52.5		3	4		35		0.5	70	90A-2P	TXY CKT #2 REGULATOR, 15KW	6
9	5KW UNIT HEATER	30A-2P	21	1		21		7	8	35			0.5	70	90A-2P	TXY CKT #3 REGULATOR, 15KW	10
13	EXHAUST FAN	20A-1P	8	0	0			9	10		35		0.5	70			
15	WIND TEE & WIND CONE	20A-1P	10	1		10		11	12				1	8	20A-1P	LIGHTING	14
17	BEACON	20A-1P	4	1				13	14	8			0.25	15	20A-1P	RECEPTACLES	16
19	APRON LIGHTS	20A-2P	12	1		12		15	16		3.75		1	12.5	20A-2P	REL 16	18
23	APRON LIGHTS	20A-2P	12	1		12		17	18		12.5		1	12.5	20A-2P	VASI 16	22
27	SPARE 30KW REGULATOR	175A-2P	137	0		0		19	20	12.5			1	12.5			
31	SPARE	20A-1P				0		21	22		12.5		1	12.5	20A-2P		
33	SPARE	20A-1P				0		23	24		12.5		1	12.5			
35	SPARE	20A-1P				0		25	26	0			0	70	90A-2P	SPARE 15KW REGULATOR	28
37	SPARE	20A-1P				0		27	28	0			0	70			
39	SPARE	20A-1P				0				0			1	2	20A-1P	L-854 RADIO CONTROLLER	30
41	SPARE	20A-1P				0				0					20A-1P	SPARE	32
										0					20A-1P	SPARE	34
										0					20A-1P	SPARE	36
										0					20A-1P	SPARE	38
										0					20A-1P	SPARE	40
										0					20A-1P	SPARE	42
SECTION TOTAL:					179.25	145.75	89.5				90.5	86.25	95	TOTAL USAGE LOAD:			82350 VA
MIN. MAIN CIRCUIT BREAKER CAPACITY:					310			PHASE TOTAL AMPS:			299.75	232	184.5	MIN. XFMR VA:			102938 VA
PROVIDE TRANSIENT VOLTAGE SURGE SUPPRESSOR (TVSS). TVSS SHALL COMPLY WITH U.L. 1449 2ND EDITION AND NEMA LS-1 - LOW VOLTAGE SURGE PROTECTION DEVICES. MINIMUM TOTAL SURGE CURRENT AND WITHSTAND CAPABILITY SHALL BE 120 KA PER PHASE, 60 KA PER MODE.																	

LIGHT FIXTURE SCHEDULE				
FIXTURE NO.	MANUFACTURER OR EQUAL	MAKE OR MODEL #	LAMP	LOCATION & MOUNTING
F1	LITHONIA	DM-2-32-120-GEB10IS	2 - 32W FLUOR.	CEILING
F2	LITHONIA	TWH-70S-120-PE-LPI	70W HPS	EXTERIOR WALL MOUNT

VERMILION COUNTY AIRPORT
 DANVILLE, ILLINOIS
 RELOCATE AIRFIELD ELECTRICAL VAULT
 SCHEDULES AND DETAILS

© Copyright CMT, Inc.
CMT
 CRAWFORD, MURPHY & TILLY, INC.
 CONSULTING ENGINEERS
 License No. 184-000613

DESIGN BY: WDP
 DRAWN BY: DLB
 CHECKED BY:
 APPROVED BY:
 DATE: 06-22-2007
 JOB No: 0704202
 ILLINOIS PROJECT DNV-3684
 A.I.P. PROJECT 3-17-0032-B11
 SHEET 9 OF 16 SHEETS