



HANSON PROFESSIONAL SERVICES INC.

815 Commerce Drive, Suite 200  
Oak Brook, Illinois 60523  
Telephone: 630.990.3800  
Fax: 630.990.3801

Illinois Professional Design Firm  
Registration No. 184-001084

© Copyright Hanson Professional Service Inc. 2007



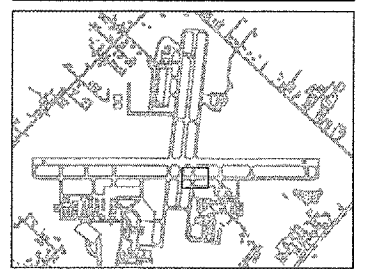
WAUKEGAN REGIONAL AIRPORT  
WAUKEGAN PORT DISTRICT

3580 North McAree Road  
Waukegan, Illinois 60087  
Telephone: 847.244.0066  
Fax: 847.244.3813

WAUKEGAN REGIONAL AIRPORT

REPAIR AND OVERLAY EAST  
PORTION OF TAXIWAY A

WAUKEGAN, ILLINOIS



No.	Drawing Issue Description	Date	By

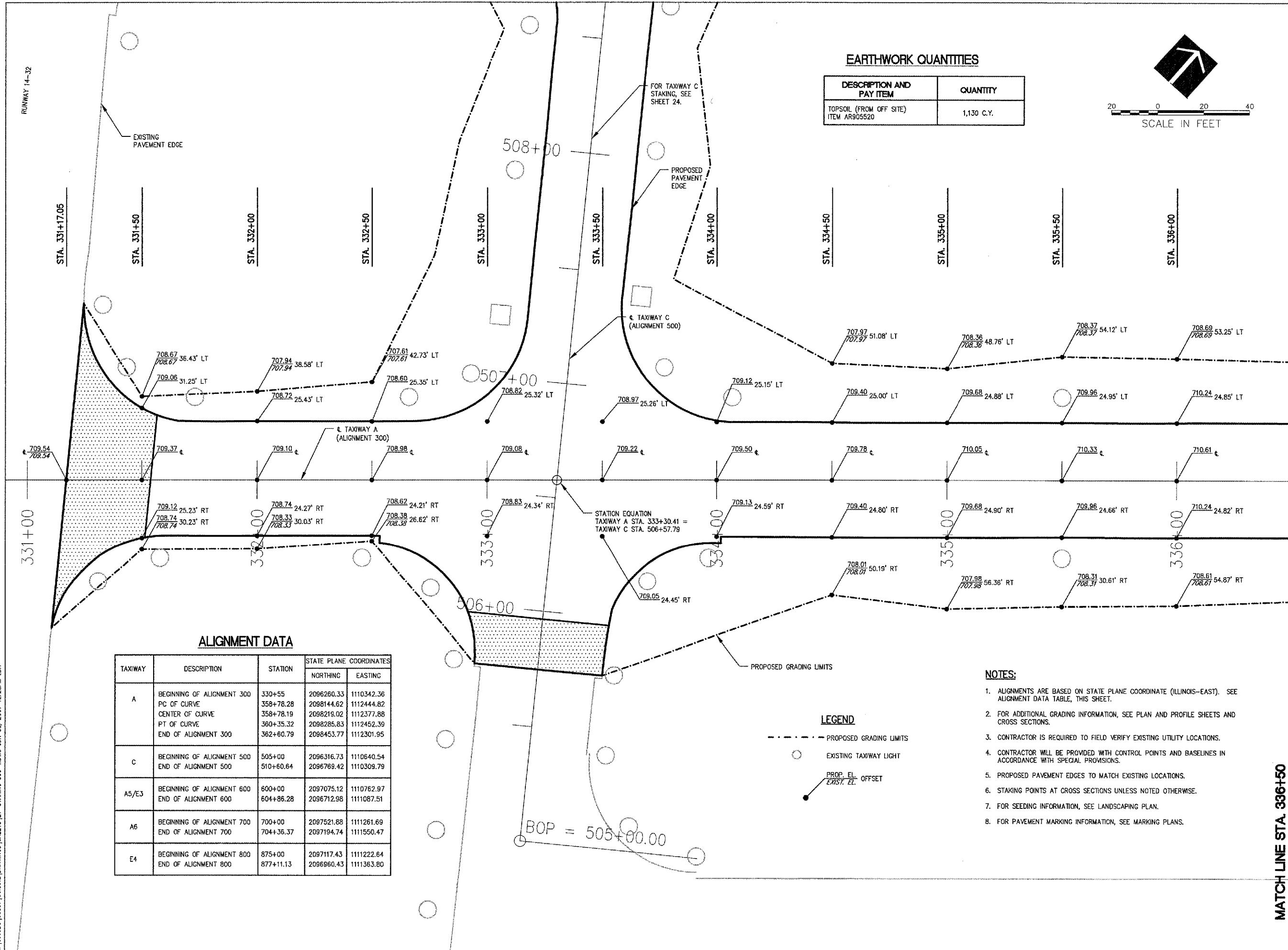
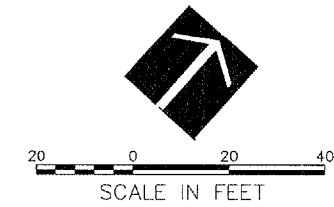
Date  
JUNE 8, 2007

Sheet Title  
**STAKING PLAN  
TAXIWAY A  
STA. 331+00 THRU  
STA. 336+50**

8310618012
Project Number
LDH 04/02/07
Layout By Date
LDH 04/02/07
Designed By Date
RMH 06/08/07
Reviewed By Date
LDH
Drawn By

**EARTHWORK QUANTITIES**

DESCRIPTION AND PAY ITEM	QUANTITY
TOPSOIL (FROM OFF SITE) ITEM AR905520	1,130 C.Y.



**ALIGNMENT DATA**

TAXIWAY	DESCRIPTION	STATION	STATE PLANE COORDINATES	
			NORTHING	EASTING
A	BEGINNING OF ALIGNMENT 300	330+55	2096260.33	1110342.36
	PC OF CURVE	358+78.28	2098144.62	1112444.82
	CENTER OF CURVE	358+78.19	2098219.02	1112377.88
	PT OF CURVE	360+35.32	2098285.83	1112452.39
	END OF ALIGNMENT 300	362+60.79	2098453.77	1112301.95
C	BEGINNING OF ALIGNMENT 500	505+00	2096316.73	1110640.54
	END OF ALIGNMENT 500	510+60.64	2096789.42	1110309.79
A5/E3	BEGINNING OF ALIGNMENT 600	600+00	2097075.12	1110762.97
	END OF ALIGNMENT 600	604+86.28	2096712.98	1111087.51
A6	BEGINNING OF ALIGNMENT 700	700+00	2097521.88	1111261.69
	END OF ALIGNMENT 700	704+36.37	2097194.74	1111550.47
E4	BEGINNING OF ALIGNMENT 800	875+00	2097117.43	1111222.64
	END OF ALIGNMENT 800	877+11.13	2096960.43	1111363.80

**NOTES:**

- ALIGNMENTS ARE BASED ON STATE PLANE COORDINATE (ILLINOIS-EAST). SEE ALIGNMENT DATA TABLE, THIS SHEET.
- FOR ADDITIONAL GRADING INFORMATION, SEE PLAN AND PROFILE SHEETS AND CROSS SECTIONS.
- CONTRACTOR IS REQUIRED TO FIELD VERIFY EXISTING UTILITY LOCATIONS.
- CONTRACTOR WILL BE PROVIDED WITH CONTROL POINTS AND BASELINES IN ACCORDANCE WITH SPECIAL PROVISIONS.
- PROPOSED PAVEMENT EDGES TO MATCH EXISTING LOCATIONS.
- STAKING POINTS AT CROSS SECTIONS UNLESS NOTED OTHERWISE.
- FOR SEEDING INFORMATION, SEE LANDSCAPING PLAN.
- FOR PAVEMENT MARKING INFORMATION, SEE MARKING PLANS.

**LEGEND**

- PROPOSED GRADING LIMITS
- EXISTING TAXIWAY LIGHT
- PROP. EL. OFFSET
- EXIST. EL.

Z:\06\JOBS\06031\06031\DRAWINGS\SHEETS\21-STAKING-300-LDING JUN 08, 2007 12:28PM LDH

MATCH LINE STA. 336+50