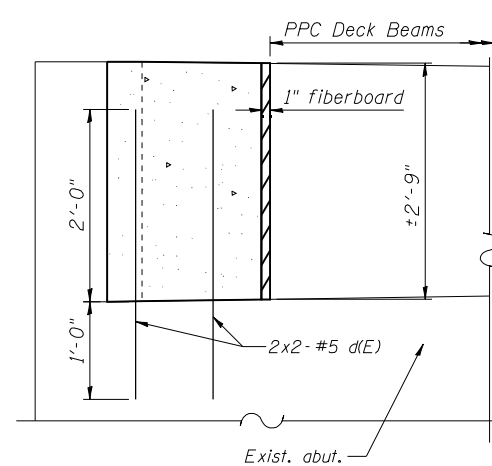


**Plan**  
(West side shown, east side similar)



**Elevation**

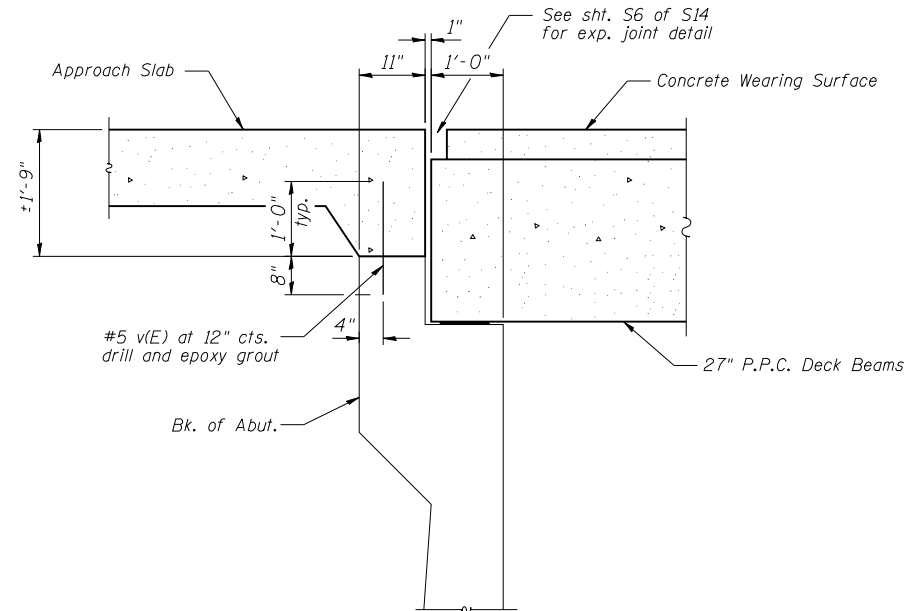
**DETAIL C**

\*Fiberboard to be included in the cost of Concrete Superstructure

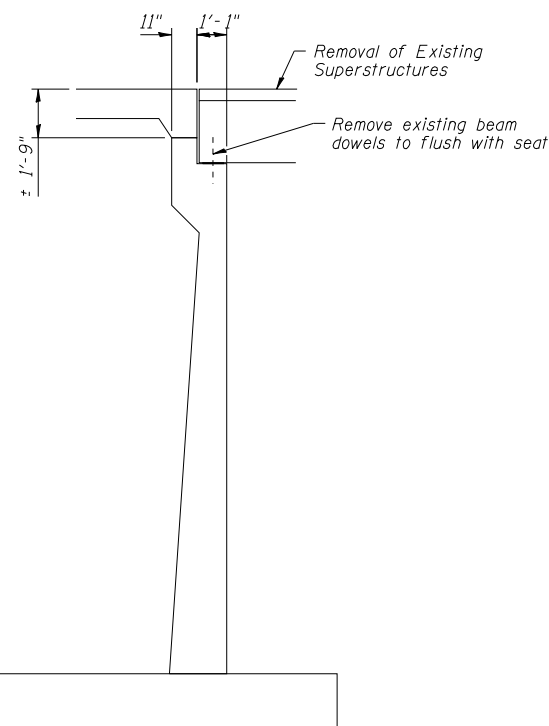
**NOTES**

Existing reinforcement bars which have lost 25% or more of their original diameter shall be supplemented by new epoxy coated bars of the same diameter. New bars shall be drilled and epoxy grouted in place adjacent to the original bars, as directed by the Engineer.

Drilling and epoxy grouting of reinforcement bars shall be in accordance with Article 584 of the Standard Specifications.



**SECTION B-B**



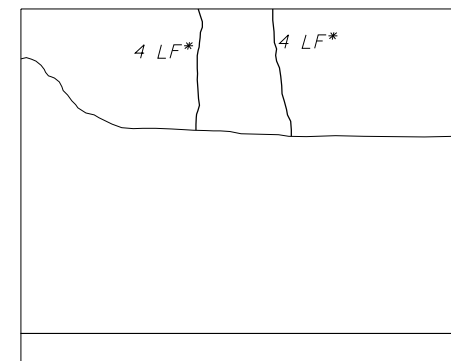
**SECTION A-A**

**STATE OF ILLINOIS  
DEPARTMENT OF TRANSPORTATION**

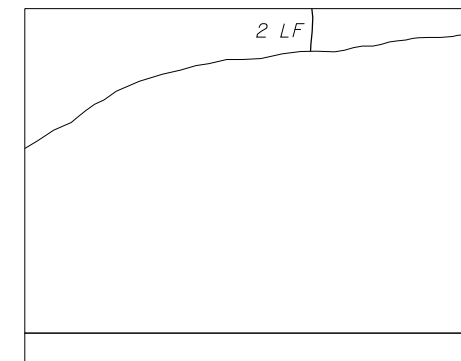
**NORTH ABUTMENT DETAILS  
STRUCTURE NO. 016-0771**

SHEET NO. S13 OF S14 SHEETS

**ELEVATION - REMOVAL AND REPAIR  
(Looking North)**



**NORTHWEST WINGWALL**



**NORTHEAST WINGWALL**

**WINGWALL DETAILS**

\*Length includes 1' along top of wingwall to be epoxy injected

**BILL OF MATERIAL**

Bar	No.	Size	Length	Shape
d(E)	8	#5	3'-0"	—
v(E)	48	#5	1'-8"	—
Concrete Superstructure			Cu. Yd.	0.25
Epoxy Crack Injection			Foot	77
Structural Repair of Concrete (Depth less than equal to 5")			Sq. Ft.	18
Reinforcement Bars, Epoxy Coated			Pound	110