

**PROPOSED LEGEND**

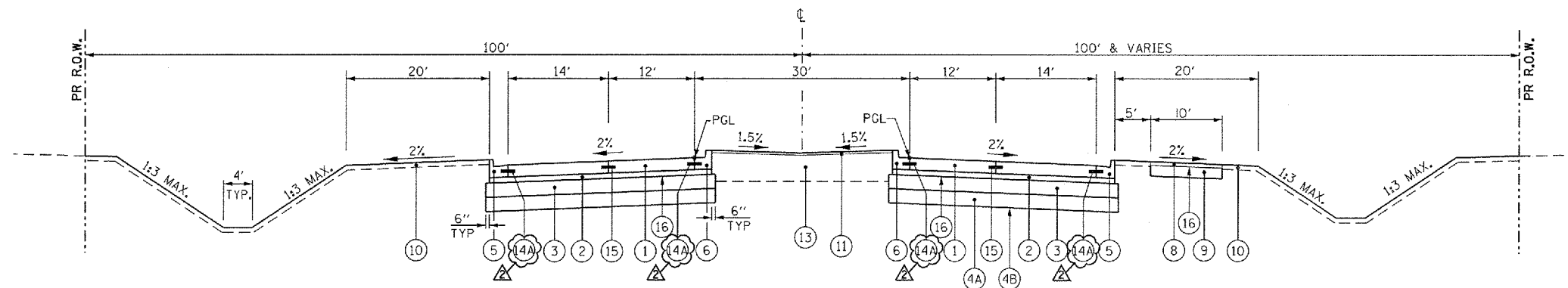
- ① PORTLAND CEMENT CONCRETE PAVEMENT 9 1/2" (JOINTED)
- ② STABILIZED SUBBASE - HOT-MIX ASPHALT, 4 1/2"
- ③ AGGREGATE SUBGRADE IMPROVEMENT 12"
- ④A POROUS GRANULAR EMBANKMENT, SUBGRADE
- ④B GEOTECHNICAL FABRIC FOR GROUND STABILIZATION
- ⑤ COMBINATION CONCRETE CURB AND GUTTER, TYPE B-6.24
- ⑥ COMBINATION CONCRETE CURB AND GUTTER, TYPE B-6.18 (MODIFIED)
- ⑦ CONCRETE MEDIAN, TYPE SB-6.18
- ⑧ HOT-MIX ASPHALT SURFACE COURSE, MIX "D", N50, 2"
- ⑨ AGGREGATE BASE COURSE, TYPE B, 6"
- ⑩ TOPSOIL EXCAVATION AND PLACEMENT, 4" WITH SEEDING, OR TOPSOIL FURNISH AND PLACE, 4" WITH SEEDING, SEE LANDSCAPING PLANS
- ⑪ COARSE SAND PLACEMENT, 2"
- ⑫ TOPSOIL EXCAVATION AND PLACEMENT, 18" WITH SEEDING, OR TOPSOIL FURNISH AND PLACE, 18" WITH SEEDING, SEE LANDSCAPING PLANS
- ⑬ TOPSOIL EXCAVATION AND PLACEMENT, 24" WITH SODDING SALT TOLERANT, OR TOPSOIL FURNISH AND PLACE, 24" WITH SODDING SALT TOLERANT
- ⑭ LONGITUDINAL CONSTRUCTION JOINT - NO. 8 TIE BARS, 24" LONG @ 24" C-C (EPOXY COATED), INCIDENTAL TO PCC PAVEMENT
- ⑭A LONGITUDINAL CONSTRUCTION JOINT - NO. 6 TIE BARS, 24" LONG @ 24" C-C (EPOXY COATED), INCIDENTAL TO PCC PAVEMENT
- ⑮ LONGITUDINAL SAWS JOINT - NO. 8 TIE BARS, 30" LONG @ 30" C-C (EPOXY COATED), INCIDENTAL TO PCC PAVEMENT
- ⑯ BITUMINOUS MATERIALS (PRIME COAT)

IL ROUTE 38 PAVEMENT SHALL BE EXTENDED LIFE CONCRETE PAVEMENT (30 YEAR). SEE SPECIAL PROVISIONS.

**SUBGRADE REPLACEMENT TABLE (UNDERCUT)**

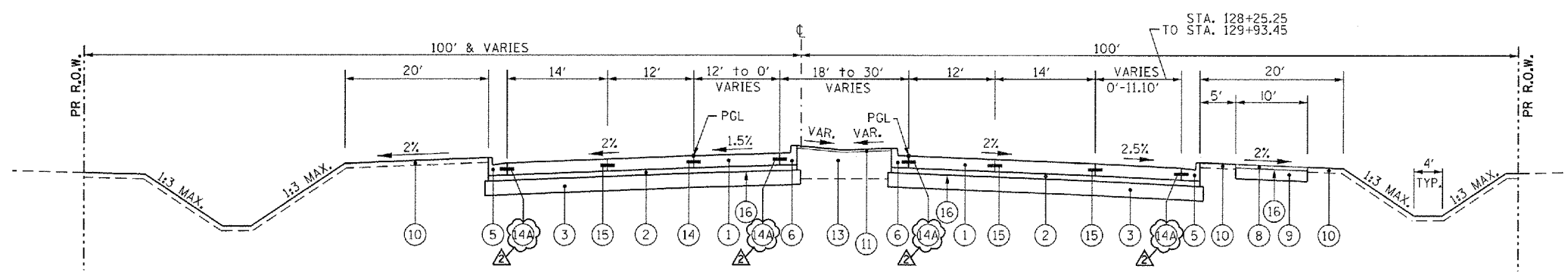
SUBGRADE REMOVAL AND REPLACEMENT WITH PGES SHALL BE REQUIRED PER THE FOLLOWING TABLE, OR AS DIRECTED BY THE ENGINEER. GEOTECHNICAL FABRIC FOR GROUND STABILIZATION SHALL BE UTILIZED IN THESE AREAS AS WELL.

STATION LIMITS	OFFSET LIMITS	DEPTH BELOW SUBGRADE
102+75 TO 105+25	FULL WIDTH	24"
113+00 TO 115+00	FULL WIDTH	24"
124+00 TO 126+00	FULL WIDTH	12"
129+50 TO 132+50	FULL WIDTH	12"
135+50 TO 138+75	FULL WIDTH	12"
145+00 TO 149+90.55	FULL WIDTH	6"



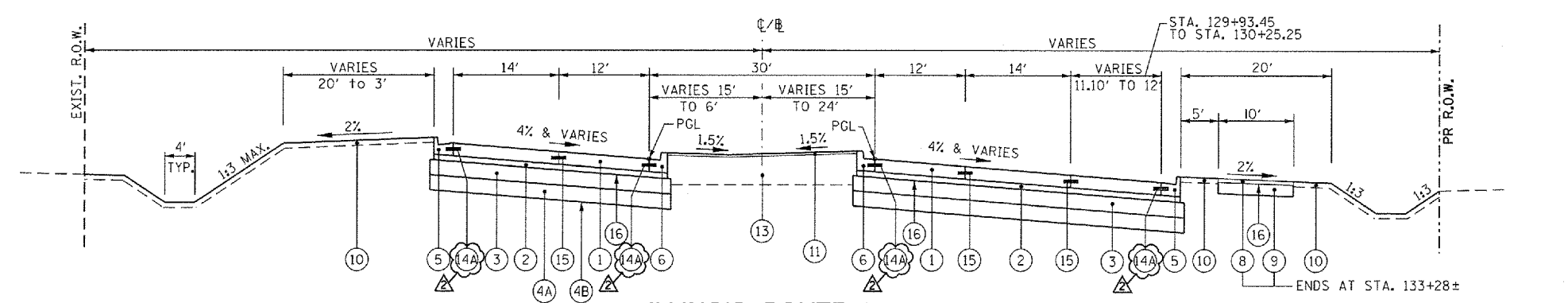
**ILLINOIS ROUTE 38**

STA. 120+80.19 TO STA. 126+00.00



**ILLINOIS ROUTE 38**

STA. 126+00.00 TO STA. 129+93.45  
SEE PAVEMENT DETAILS SHEET FOR SUPERELEVATION TRANSITIONS



**ILLINOIS ROUTE 38**

STA. 129+93.45 TO STA. 133+12.75  
STA. 133+12.75 TO STA. 135+30.97 (TANGENT SECTION)  
SEE PAVEMENT DETAILS SHEET FOR SUPERELEVATION TRANSITIONS

McDonough Associates Inc.  
Engineers / Architects  
130 East Randolph Street, Chicago, Illinois 60601

FILE NAME = D:\68122-SHT-TYPICAL05.dgn	USER NAME = YKjm	DESIGNED - ---	REVISED $\Delta$ REV. 07/12/12	<b>STATE OF ILLINOIS DEPARTMENT OF TRANSPORTATION</b>	<b>PROPOSED TYPICAL SECTIONS</b>			F.A.P. RTE. 347	SECTION LY (HB & VB)	COUNTY DUPAGE/KANE	TOTAL SHEETS 421	SHEET NO. 17
	PLOT SCALE = 1:10	CHECKED - E.J.G.	REVISED -		SCALE: NONE	SHEET NO. 5 OF 8 SHEETS	STA.	TO STA.	<b>TYP-5</b>		CONTRACT NO. 60122	
	PLOT DATE = 07/12/12	DATE - 03/07/12	REVISED -		FED. ROAD DIST. NO. 1 ILLINOIS FED. AID PROJECT							