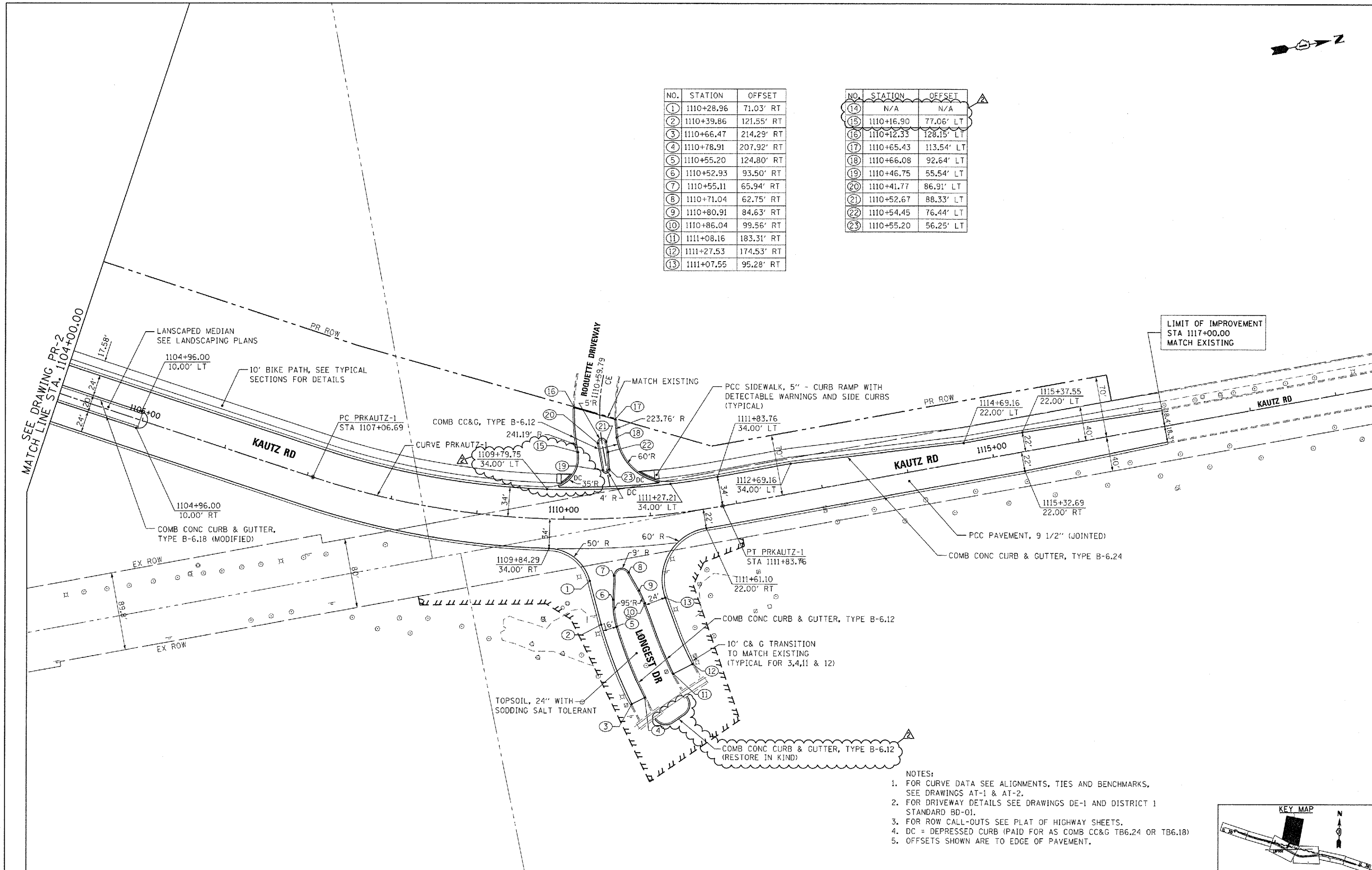




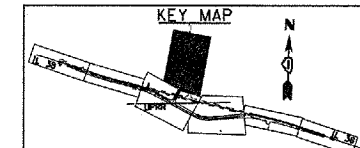
NO.	STATION	OFFSET
①	1110+28.96	71.03' RT
②	1110+39.86	121.55' RT
③	1110+66.47	214.29' RT
④	1110+78.91	207.92' RT
⑤	1110+55.20	124.80' RT
⑥	1110+52.93	93.50' RT
⑦	1110+55.11	65.94' RT
⑧	1110+71.04	62.75' RT
⑨	1110+80.91	84.63' RT
⑩	1110+86.04	99.56' RT
⑪	1111+08.16	183.31' RT
⑫	1111+27.53	174.53' RT
⑬	1111+07.55	95.28' RT

NO.	STATION	OFFSET
⑭	N/A	N/A
⑮	1110+16.90	77.06' LT
⑯	1110+12.33	128.15' LT
⑰	1110+65.43	113.54' LT
⑱	1110+66.08	92.64' LT
⑲	1110+46.75	55.54' LT
⑳	1110+41.77	86.91' LT
㉑	1110+52.67	88.33' LT
㉒	1110+54.45	76.44' LT
㉓	1110+55.20	56.25' LT



LIMIT OF IMPROVEMENT
STA 1117+00.00
MATCH EXISTING

- NOTES:
- FOR CURVE DATA SEE ALIGNMENTS, TIES AND BENCHMARKS, SEE DRAWINGS AT-1 & AT-2.
 - FOR DRIVEWAY DETAILS SEE DRAWINGS DE-1 AND DISTRICT 1 STANDARD BD-01.
 - FOR ROW CALL-OUTS SEE PLAT OF HIGHWAY SHEETS.
 - DC = DEPRESSED CURB (PAID FOR AS COMB CC&G TB6.24 OR TB6.18)
 - OFFSETS SHOWN ARE TO EDGE OF PAVEMENT.



McDonough Associates Inc.
Engineers / Architects
130 East Randolph Street, Chicago, Illinois 60601

FILE NAME = D1680122-SHT-PLAN05.dgn	USER NAME = YKjm	DESIGNED - JTF	REVISED REV. 07/12/12
PLOT SCALE = 1:50	CHECKED - EJG	DRAWN - JTF	REVISED -
PLOT DATE = 07/12/12	DATE - 03/07/12		REVISED -

STATE OF ILLINOIS
DEPARTMENT OF TRANSPORTATION

KAUTZ ROAD PROPOSED PLAN

SCALE: 1"=50' SHEET NO. 1 OF 1 SHEETS STA. 1104+00 TO STA. END

F.A.P. RTE. 347	SECTION LY (HB & VB)	COUNTY DUPAGE/KANE	TOTAL SHEETS 421	SHEET NO. 35
PR-5			CONTRACT NO. 60122	
FED. ROAD DIST. NO. 1 ILLINOIS FED. AID PROJECT				