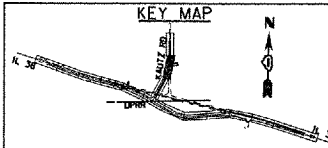
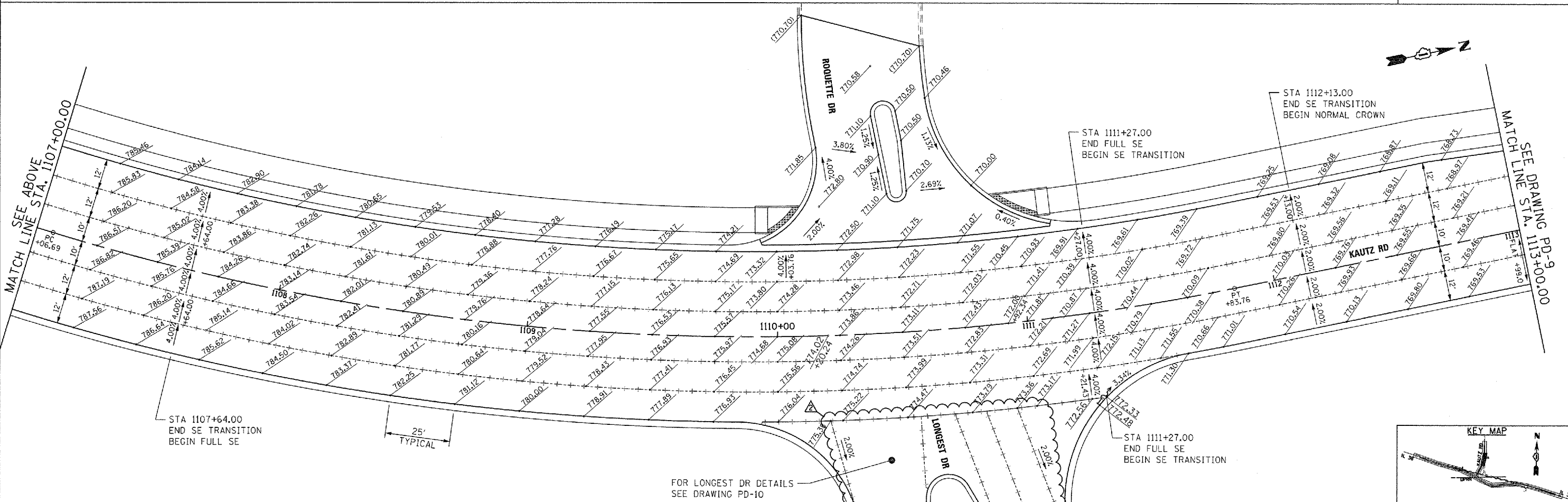
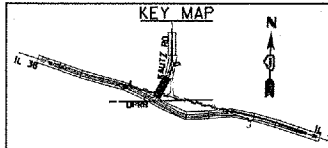


- NOTES
- ELEVATIONS ARE SHOWN AT 25' INTERVALS AND ARE FOR INFORMATION ONLY. THE CONTRACTOR SHALL VERIFY ALL ELEVATIONS PRIOR TO CONSTRUCTION.
 - TRANSVERSE CONTRACTION JOINTS ARE TYPICALLY SPACED AT 15'. REFER TO IDOT STANDARDS 420001, 420101, 420106, 420201 AND 420401 FOR JOINT DETAILS AND SPACING.



McDonough Associates Inc.
 Engineers / Architects
 130 East Randolph Street, Chicago, Illinois 60601

FILE NAME = D160122-SHT-PAVEMENT-DETAIL.S08.dgn
 USER NAME = YK1m
 PLOT SCALE = 1:20
 PLOT DATE = 07/12/12

DESIGNED - JTF	REVISED REV. 07/12/12
DRAWN - JTF	REVISED -
CHECKED - EJG	REVISED -
DATE - 03/07/12	REVISED -

STATE OF ILLINOIS
 DEPARTMENT OF TRANSPORTATION

KAUTZ ROAD PAVEMENT DETAILS

SCALE: 1"=20' SHEET NO. 1 OF 2 SHEETS STA. 1101+00 TO STA. 1113+00

F.A.P. RTE. 347	SECTION LY (HB & VB)	COUNTY DUPAGE/KANE	TOTAL SHEETS 421	SHEET NO. 122
PD-8			CONTRACT NO. 60122	
FED. ROAD DIST. NO. 1 ILLINOIS FED. AID PROJECT				