

STATE OF ILLINOIS  
 DEPARTMENT OF TRANSPORTATION  
 DIVISION OF HIGHWAYS  
**PROPOSED  
 HIGHWAY PLANS**

FAI ROUTE 94: INT 94/US 41 WISCONSIN STATE LINE TO IL 173  
 SECTION 49-1-R-1  
 PROJECT: ACIM-094-1(027)003  
 ADDITIONAL LANES, INTERCHANGE RECONSTRUCTION,  
 BRIDGE REPLACEMENT  
 LAKE COUNTY  
 C-91-020-11

F.A. RTE.	SECTION	COUNTY	TOTAL SHEETS	SHEET NO.
94	49-1-R-1	LAKE	67	1
ILLINOIS			CONTRACT NO. 60L77	

D-91-019-11 \*677 +35 = 712

\*712 +12 = 724



FOR INDEX OF SHEETS, SEE SHEET NO. 2

**DESIGN DESIGNATION**

I-94  
 16,590(30) INTERSTATE 71.64(PCC-20)

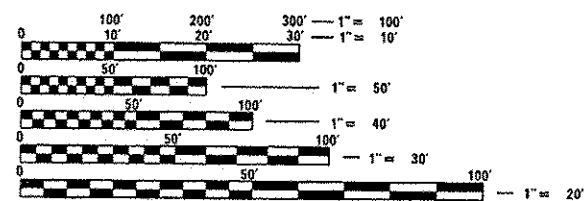
IL 173  
 3,820(30) ARTERIAL 7.54(PCC-20)

**TRAFFIC DATA**

I-94  
 EXISTING ADT: 89,200 (2007)  
 DESIGN ADT: 126,650 (2030)  
 DESIGN SPEED LIMIT: 70 MPH TOLLWAY AND  
 65 MPH IDOT

IL 173  
 EXISTING ADT: 12,800 (2007)  
 DESIGN ADT: 16,400 (2030)  
 DESIGN SPEED: 50 MPH  
 POSTED SPEED LIMIT: 45 MPH

PROJECT LOCATED IN THE VILLAGES OF  
 WADSWORTH AND OLD MILL CREEK



FULL SIZE PLANS HAVE BEEN PREPARED USING STANDARD  
 ENGINEERING SCALES. REDUCED SIZED PLANS WILL NOT  
 CONFORM TO STANDARD SCALES. IN MAKING MEASUREMENTS  
 ON REDUCED PLANS, THE ABOVE SCALES MAY BE USED.

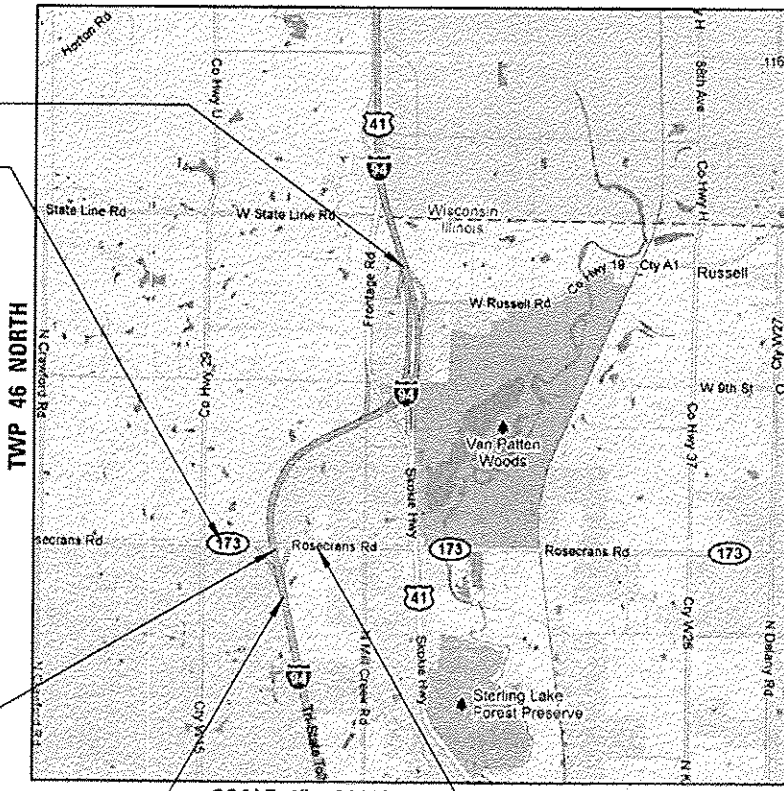
J.U.L.I.E.  
 JOINT UTILITY LOCATION INFORMATION FOR EXCAVATION  
 1-800-892-0123  
 OR 811

PROJECT MANAGER: RAJENDRA SHAH (847)705-4555

CONTRACT NO. 60L77

RANGE 11E, 3RD PRINCIPAL MERIDIAN

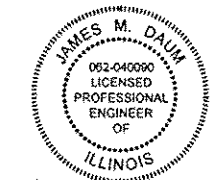
PROJECT ENDS  
 STA. 4105 + 52.38  
 PROJECT BEGINS  
 STA. 2016 + 08.15



IL 173 OVER F.A.I. I-94  
 BRIDGE RECONSTRUCTION  
 S.N. 049-0535

PROJECT BEGINS STA. 3978 + 89.91  
 PROJECT ENDS STA. 2051 + 71.59

SCALE 1" = 3000'  
 GROSS LENGTH = 13,783.52 FT. = 2.61 MILES  
 NET LENGTH = 12,820.52 FT. = 2.43 MILES



SIGNED: *James M. Daum*  
 DATE: May 9, 2012  
 EXPIRES: 11/30/2013  
 SHEETS: \_\_\_\_\_



SIGNED: *David L. Taggart*  
 DATE: MAY 9, 2012  
 EXPIRES: 11/30/2013  
 SHEETS: \_\_\_\_\_



SIGNED: *Brian L. Umbright*  
 DATE: MAY 9, 2012  
 EXPIRES: 11/30/2012  
 SHEETS: \_\_\_\_\_

BOWMAN, BARRETT & ASSOCIATES INC.  
 CONSULTING ENGINEERS  
 Chicago, Illinois  
 312.228.0100  
 www.bbainc.com

STATE OF ILLINOIS  
 DEPARTMENT OF TRANSPORTATION  
 DIVISION OF HIGHWAYS  
 SUBMITTED: MAY 9, 2012  
*Diane M. O'Keefe*  
 DEPUTY DIRECTOR OF HIGHWAYS, REGION ENGINEER  
 June 29, 2012  
*John D. Baranzelli PE*  
 acting ENGINEER OF DESIGN AND ENVIRONMENT  
 June 29, 2012  
*William R. Frey*  
 acting DIRECTOR OF HIGHWAYS, CHIEF ENGINEER

PRINTED BY THE AUTHORITY  
 OF THE STATE OF ILLINOIS

Rev. 7-24-12

S:\101\05-CADD\60L77 IL 173\60L77 Sheets\060L77-SHT-cover.dgn