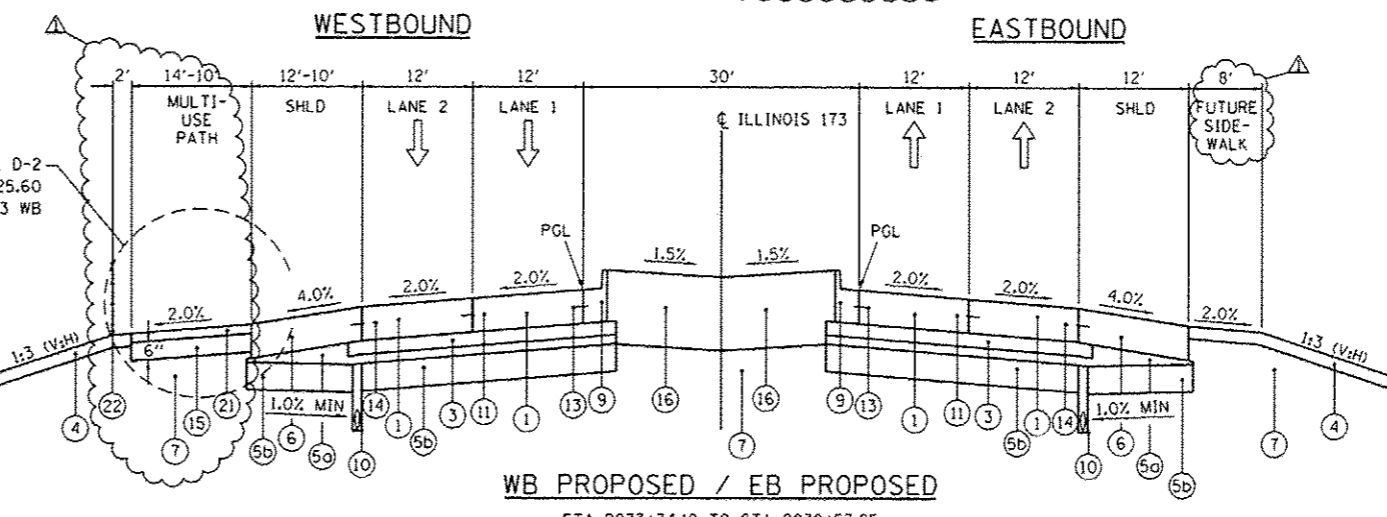
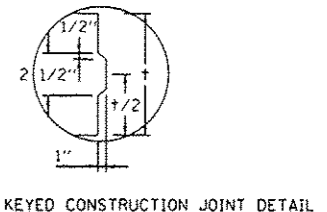
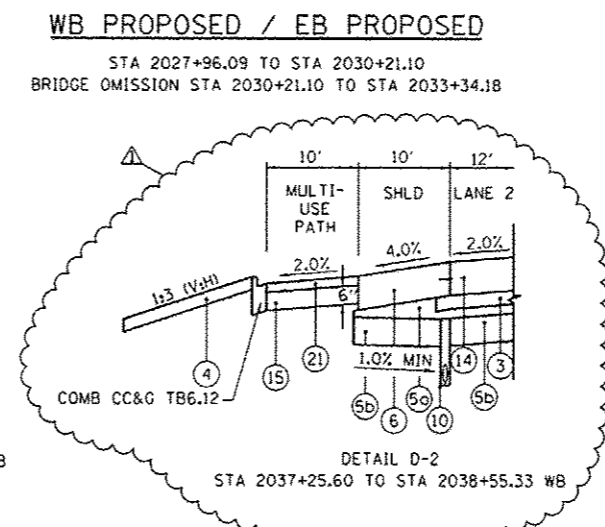
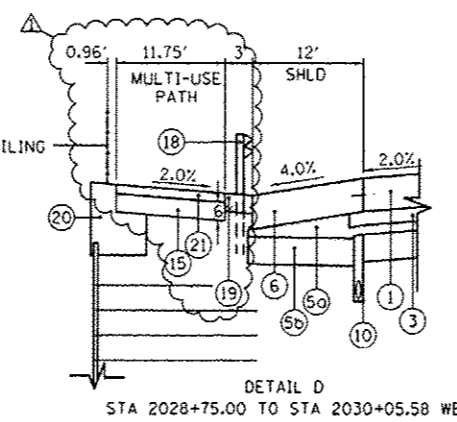
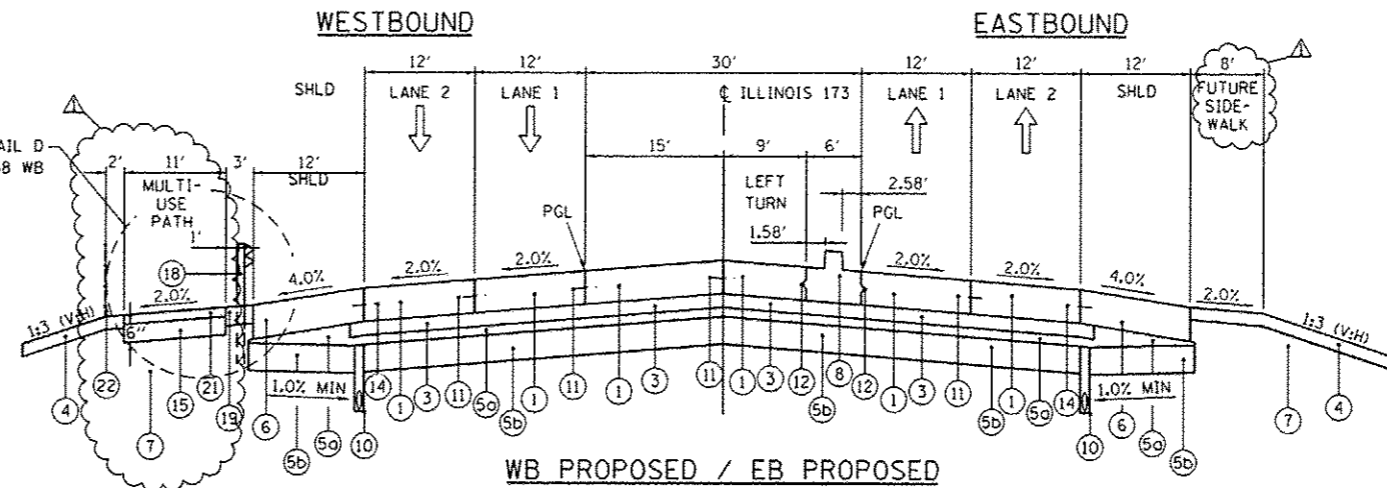


**EXISTING LEGEND**

- (A) EXISTING TOPSOIL
- (B) EXISTING AGGREGATE SHOULDER
- (C) EXISTING ASPHALT SHOULDER
- (D) EXISTING GRANULAR SUB-BASE, 6"
- (E) EXISTING REINFORCED CONCRETE PAVEMENT, 10"
- (F) EXISTING ASPHALT OVERLAY
- (G) EXISTING CONCRETE MEDIAN
- (H) EXISTING STEEL BEAM GUARDRAIL

**PROPOSED LEGEND**

- (1) PORTLAND CEMENT CONCRETE PAVEMENT 9 1/2" (JOINTED) (42000411)
- (2) CONCRETE MEDIAN SURFACE, 6 INCH (60618320)
- (3) STABILIZED SUBBASE - HOT MIX ASPHALT, 4 1/2" (31200502)
- (4) TOPSOIL EXCAVATION AND PLACEMENT (21101505) (4")
- (5) AGGREGATE SUBGRADE IMPROVEMENT 12" (30300112)
- (5a) 3" CA-6 AGGREGATE CAP (THICKNESS VARIES UNDER SHOULDER)
- (5b) 9" PGE
- (6) PORTLAND CEMENT CONCRETE SHOULDERS 9 1/2" (48300410)
- (7) EMBANKMENT MATERIAL AS NEEDED (SEE CROSS SECTIONS)
- (8) CONCRETE MEDIAN, TYPE SB (SPECIAL) (X6061100)
- (9) COMBINATION CONCRETE CURB AND GUTTER, TYPE B-6.24 (60605000)
- (10) PIPE UNDERDRAINS 6" (60107700) (SEE IDOT STANDARD 601001-04)
- (11) LONGITUDINAL SAWS OR CONSTRUCTION JOINT.  
FOR LONGITUDINAL SAWS, POUR IN PLACE NO. 6 DEFORMED EPOXY TIE BARS 30" LONG AT 30" C-C. FOR LONGITUDINAL CONSTRUCTION JOINT, DRILL AND GROUT NO. 6 DEFORMED EPOXY TIE BARS 24" LONG AT 24" C-C. (SHALL BE INCLUDED IN THE COST OF PORTLAND CEMENT CONCRETE PAVEMENT, 9 1/2" (JOINTED))
- (12) LONGITUDINAL KEYPED CONSTRUCTION JOINT PER STD. 420001 (SHALL BE INCLUDED IN THE COST OF PORTLAND CEMENT CONCRETE PAVEMENT, 9 1/2" (JOINTED))
- (13) LONGITUDINAL CONSTRUCTION JOINT.  
DRILL AND GROUT NO. 6 DEFORMED EPOXY TIE BARS 24" LONG AT 24" C-C. (SHALL BE INCLUDED IN THE COST OF THE APPLICABLE COMB. CONC. CURB & GUTTER TYPE)
- (14) LONGITUDINAL CONSTRUCTION JOINT.  
DRILL AND GROUT NO. 6 DEFORMED EPOXY TIE BARS 24" LONG AT 24" C-C. (SHALL BE INCLUDED IN THE COST OF PORTLAND CEMENT CONCRETE SHOULDERS, 9 1/2")
- (15) AGGREGATE BASE COURSE, TYPE B (35101500)
- (16) TOPSOIL EXCAVATION AND PLACEMENT (21101505) (24")
- (17) COMBINATION CONCRETE CURB AND GUTTER, TYPE M-4.24 (X6063600)
- (18) STEEL PLATE BEAM GUARDRAIL, TYPE A, 6 FOOT POSTS (63000001)
- (19) HOT-MIX ASPHALT STABILIZATION 6" AT STEEL PLATE BEAM GUARD RAIL (Z0005216)
- (20) RETAINING WALL (SEE STRUCTURAL PLANS)
- (21) HOT MIX ASPHALT SURFACE COURSE MIX "D", N50 (3")
- (22) CHAIN LINK FENCE, 4' (66400105)



BOWMAN, BARRETT & ASSOCIATES INC.  
CONSULTING ENGINEERS  
Chicago, Illinois  
312.228.0100  
www.bbandainc.com

FILE NAME = #FILES	USER NAME = default	DESIGNED - JMG	REVISED - 7/17/12 RGR
		DRAWN - JMG	REVISED -
		CHECKED - RGR	REVISED -
		DATE - 6/19/2012	REVISED -

STATE OF ILLINOIS  
DEPARTMENT OF TRANSPORTATION

SCALE: NA	SHEET NO. 14 OF 15 SHEETS	STA. NA TO STA. NA
-----------	---------------------------	--------------------

F.A. RTE. 94	SECTION 49-1-R-1	COUNTY LAKE	TOTAL SHEETS 677	SHEET NO. 42
CONTRACT NO. 60L77				
ILLINOIS FED. AID PROJECT				

S:\10118\60L77\Drawings\60L77-14.dwg 7/17/12 11:58:17 AM