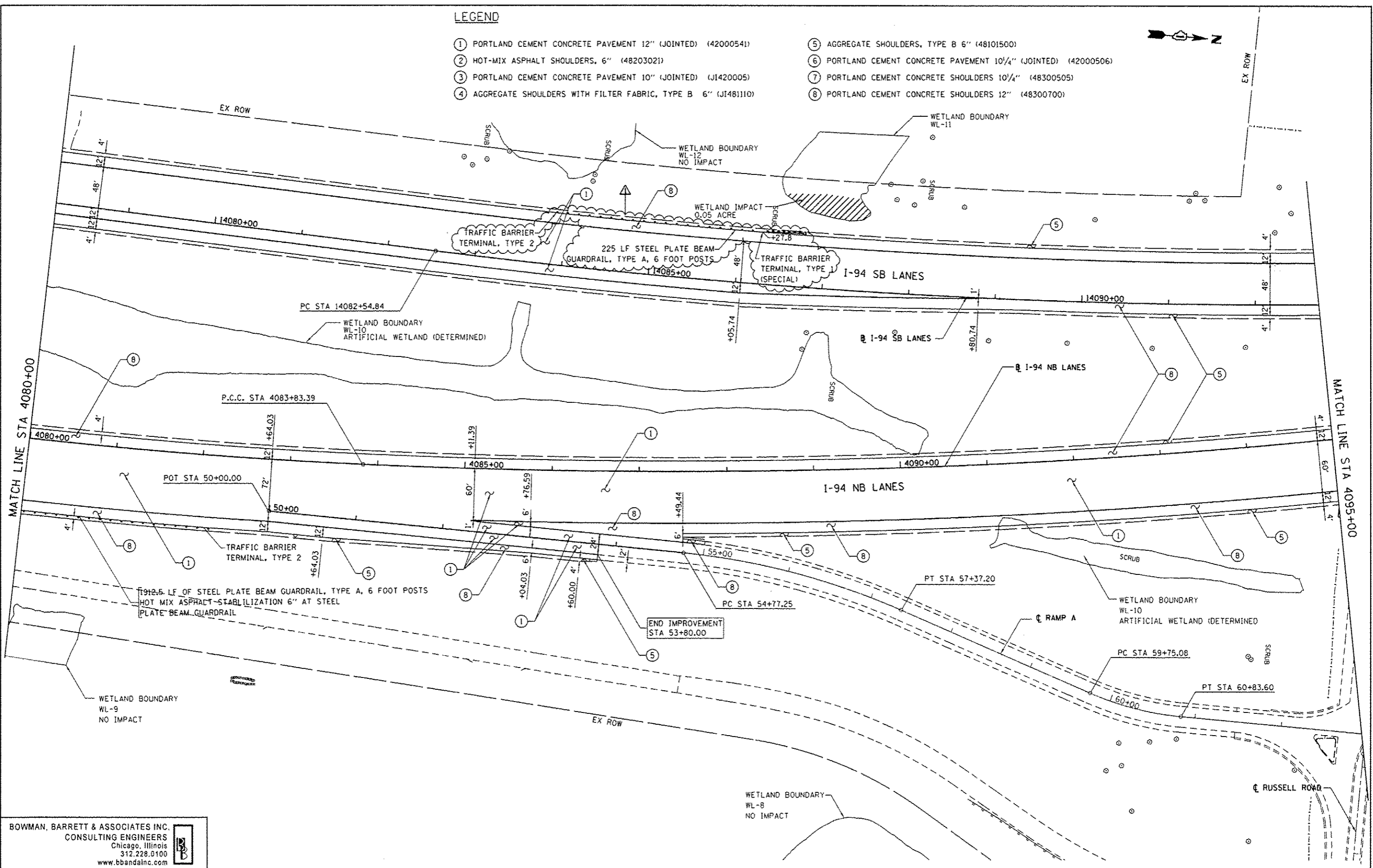


LEGEND

- ① PORTLAND CEMENT CONCRETE PAVEMENT 12" (JOINTED) (42000541)
- ② HOT-MIX ASPHALT SHOULDERS, 6" (48203021)
- ③ PORTLAND CEMENT CONCRETE PAVEMENT 10" (JOINTED) (J1420005)
- ④ AGGREGATE SHOULDERS WITH FILTER FABRIC, TYPE B 6" (J1481110)

- ⑤ AGGREGATE SHOULDERS, TYPE B 6" (48101500)
- ⑥ PORTLAND CEMENT CONCRETE PAVEMENT 10 1/4" (JOINTED) (42000506)
- ⑦ PORTLAND CEMENT CONCRETE SHOULDERS 10 1/4" (48300505)
- ⑧ PORTLAND CEMENT CONCRETE SHOULDERS 12" (48300700)



BOWMAN, BARRETT & ASSOCIATES INC.
 CONSULTING ENGINEERS
 Chicago, Illinois
 312.228.0100
 www.bbainc.com

| | | | |
|---------------------|---------------------|------------------|--------------------------------|
| FILE NAME * #FILES* | USER NAME * default | DESIGNED - JDC | REVISED Δ 7/17/2012 JMK |
| | | DRAWN - JDC | REVISED - |
| | | CHECKED - RGR | REVISED - |
| | | DATE - 6/19/2012 | REVISED - |

**STATE OF ILLINOIS
 DEPARTMENT OF TRANSPORTATION**

PROPOSED ROAD PLAN NB I-94 AND SB I-94

SCALE: 1"=50' SHEET NO. 8 OF 9 SHEETS STA. 4080+00 TO STA. 4095+00

| | | | | |
|--------------------|----------|--------|-----------------------------|-----------|
| F.A. RTE. | SECTION | COUNTY | TOTAL SHEETS | SHEET NO. |
| 94 | 49-1-R-1 | LAKE | 677 | 77 |
| CONTRACT NO. 60L77 | | | [ILLINOIS] FED. AID PROJECT | |

S:\181\95.CAD\60L77 N 173\60L77 Sheet\60L77-81.plt\p1.dwg