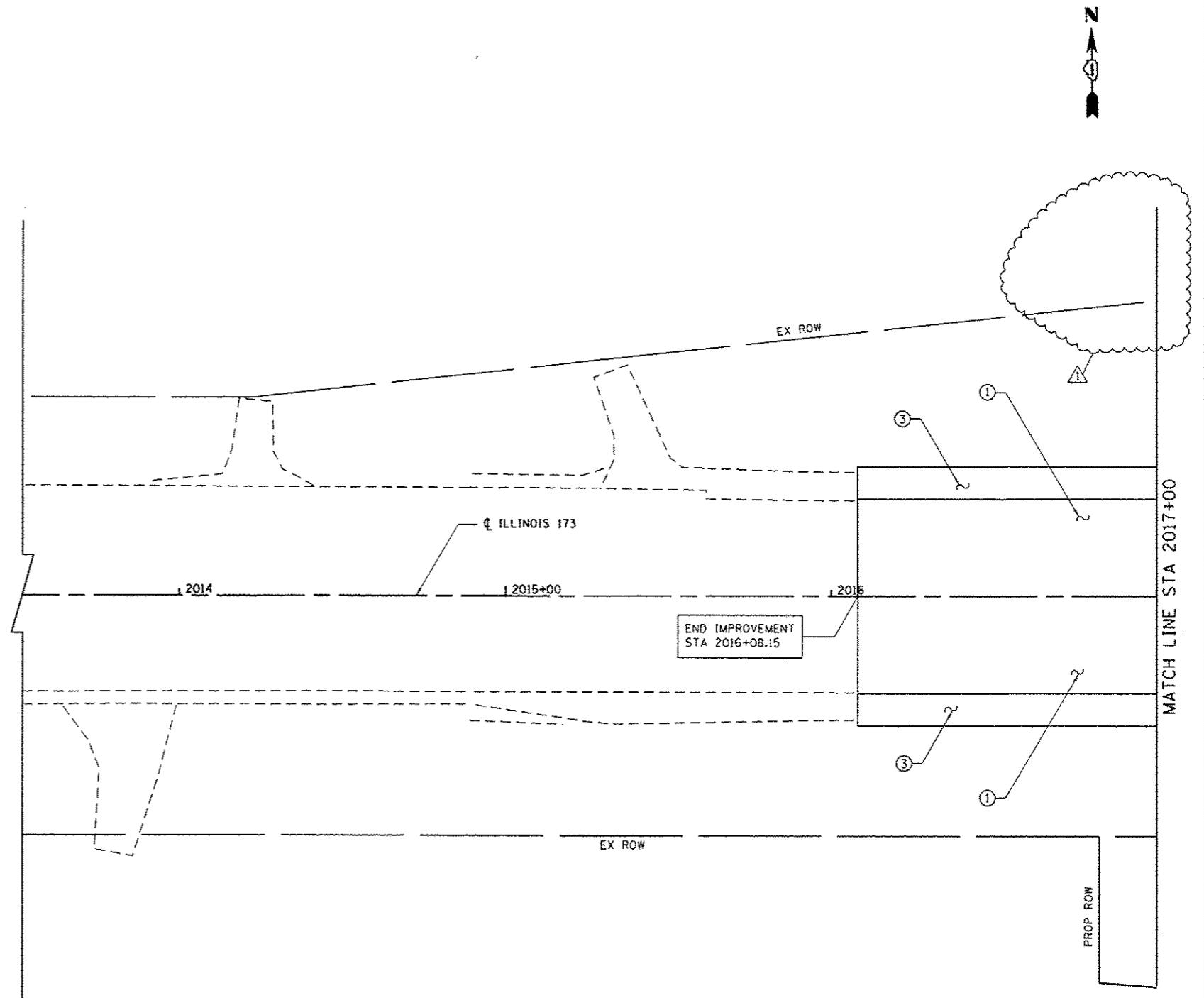


**LEGEND**

- ① PORTLAND CEMENT CONCRETE PAVEMENT 9 1/2" (JOINTED) (42000411)
- ② PORTLAND CEMENT CONCRETE PAVEMENT 10" (JOINTED) (J1420005)
- ③ PORTLAND CEMENT CONCRETE SHOULDERS 9 1/2" (48300410)
- ④ HOT-MIX ASPHALT SHOULDERS (6 IN.) (48203021)
- ⑤ NOT USED
- ⑥ AGGREGATE SHOULDERS WITH FILTER FABRIC, TYPE B 6" (J1481110)
- ⑦ GUTTER, TYPE C-2 (J1606010)
- ⑧ COMBINATION CONCRETE CURB AND GUTTER, TYPE B-6.24 (60605000)
- ⑨ COMBINATION CONCRETE CURB AND GUTTER, TYPE M-4.24 (X6063600)
- ⑩ CONCRETE MEDIAN, TYPE SB (SPECIAL) (X6061100)
- ⑪ CORRUGATED MEDIAN (60624600)
- ⑫ CONCRETE MEDIAN SURFACE, 6 INCH (60618320)
- ⑬ NOT USED
- ⑭ HOT-MIX ASPHALT STABILIZATION 6" AT STEEL PLATE BEAM GUARD RAIL (Z0005216)
- ⑮ [HOT MIX ASPHALT BASE COURSE, 6" (35501308)  
HOT MIX ASPHALT SURFACE COURSE, MIX "D", N50, (2") (40603335)]
- ⑯ STEEL PLATE BEAM GUARDRAIL, TYPE A, 6 FOOT POSTS (63000001)
- ⑰ TRAFFIC BARRIER TERMINAL, TYPE 1 (SPECIAL) TANGENT (63100167)
- ⑱ TRAFFIC BARRIER TERMINAL, TYPE 2 (63100045)
- ⑲ TRAFFIC BARRIER TERMINAL, TYPE 5 (63100070)
- ⑳ TRAFFIC BARRIER TERMINAL, TYPE 6 (63100085)
- ㉑ [SEEDING, CLASS 2A (25000210)  
TOPSOIL FURNISH AND PLACE, 24" (21101685)]
- ㉒ COMBINATION CONCRETE CURB AND GUTTER, TYPE B-6.12 (60603800)
- ㉓ COMBINATION CONCRETE CURB AND GUTTER OUTLET, (SPECIAL) (X6060160)
- ㉔ CONCRETE GUTTER, TYPE B (60602800)
- ㉕ CONCRETE CURB, TYPE B (60600605)
- ㉖ [AGGREGATE BASE COURSE, TYPE B, 6", (35101500)  
HOT MIX ASPHALT SURFACE COURSE, MIX "D", N50, (3") (40603335)]



BOWMAN, BARRETT & ASSOCIATES INC.  
CONSULTING ENGINEERS  
Chicago, Illinois  
312.228.0100  
www.bbandaInc.com

FILE NAME = #FILES#	USER NAME = default	DESIGNED - JDC	REVISED  - 7/17/12 JDC
		DRAWN - JDC	REVISED -
	PLOT SCALE = 1/8" = 1' 0"	CHECKED - RGR	REVISED -
	PLOT DATE = 7/24/2012	DATE - 6/19/2012	REVISED -

**STATE OF ILLINOIS  
DEPARTMENT OF TRANSPORTATION**

**PROPOSED ROAD PLAN IL RTE 173**  
SCALE: 1"=20' SHEET NO. 1 OF 8 SHEETS STA. 2013+50 TO STA. 2017+00

F.A. RTE.	SECTION	COUNTY	TOTAL SHEETS	SHEET NO.
94	49-1-R-1	LAKE	677	79
CONTRACT NO. 60L77				
ILLINOIS FED. AID PROJECT				

S:\101\95\_CADD\95L77\_IL\_173\95L77\_Sheets\01\95L77-94R-1.dwg