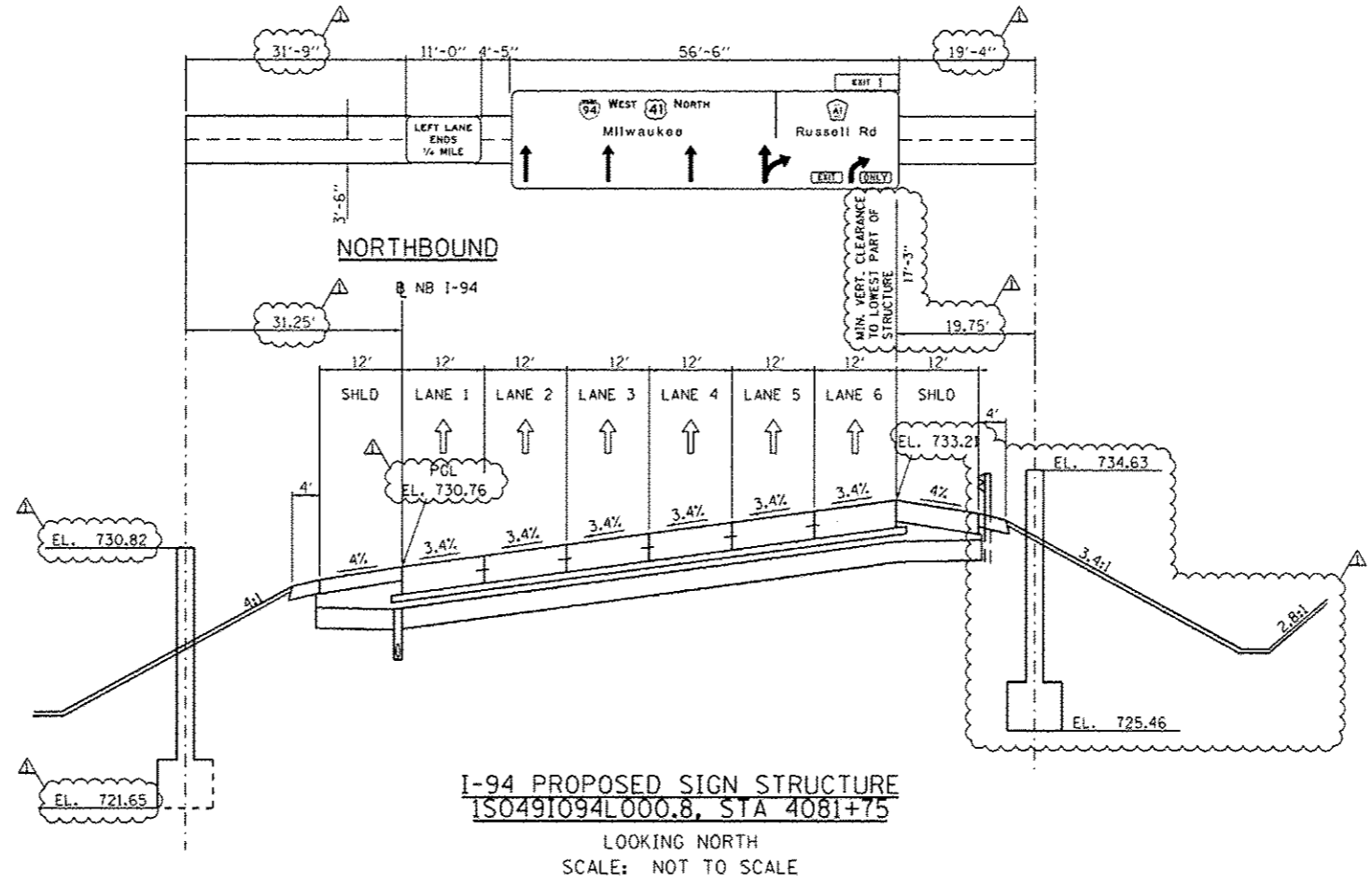


- NOTES:
1. THE CONTRACTOR SHALL VERIFY FINAL SUPPORT HEIGHT IN THE FIELD PRIOR TO SUBMITTING SHOP DRAWINGS FOR FABRICATION TO MAINTAIN MINIMUM CLEARANCE SHOWN.
 2. FOR DETAIL OF SIGN STRUCTURE, SEE OVERHEAD SIGN STRUCTURE DETAIL SHEETS.
 3. THE SIGN SPACERS IN THE OVERHEAD SPAN ARE THEORETICAL. THE DETAILER SHALL LOCATE SUPPORTS TO MISS POINT OF INTERFERENCE SUCH AS PANEL POINTS OF TRUSSES BY MOVING SUPPORTS EITHER WAY OF THE POINT OF INTERFERENCE.



FILE NAME * #FILES*	USER NAME * default	DESIGNED - TF	REVISED Δ 7/17/2012 JMG	STATE OF ILLINOIS DEPARTMENT OF TRANSPORTATION	SIGN STRUCTURE SECTIONS	F.A. RTE.	SECTION	COUNTY	TOTAL SHEETS	SHEET NO.	
		CHECKED - RGR	REVISED			94	49-1-R-1	LAKE	677	292	
		DRAWN - TF	REVISED			CONTRACT NO. 60L77					
		PLOT DATE * 7/16/2012	CHECKED - RGR			ILLINOIS FED. AID PROJECT					

77 Sheets 301001.TT-shr-signstructures.dwg