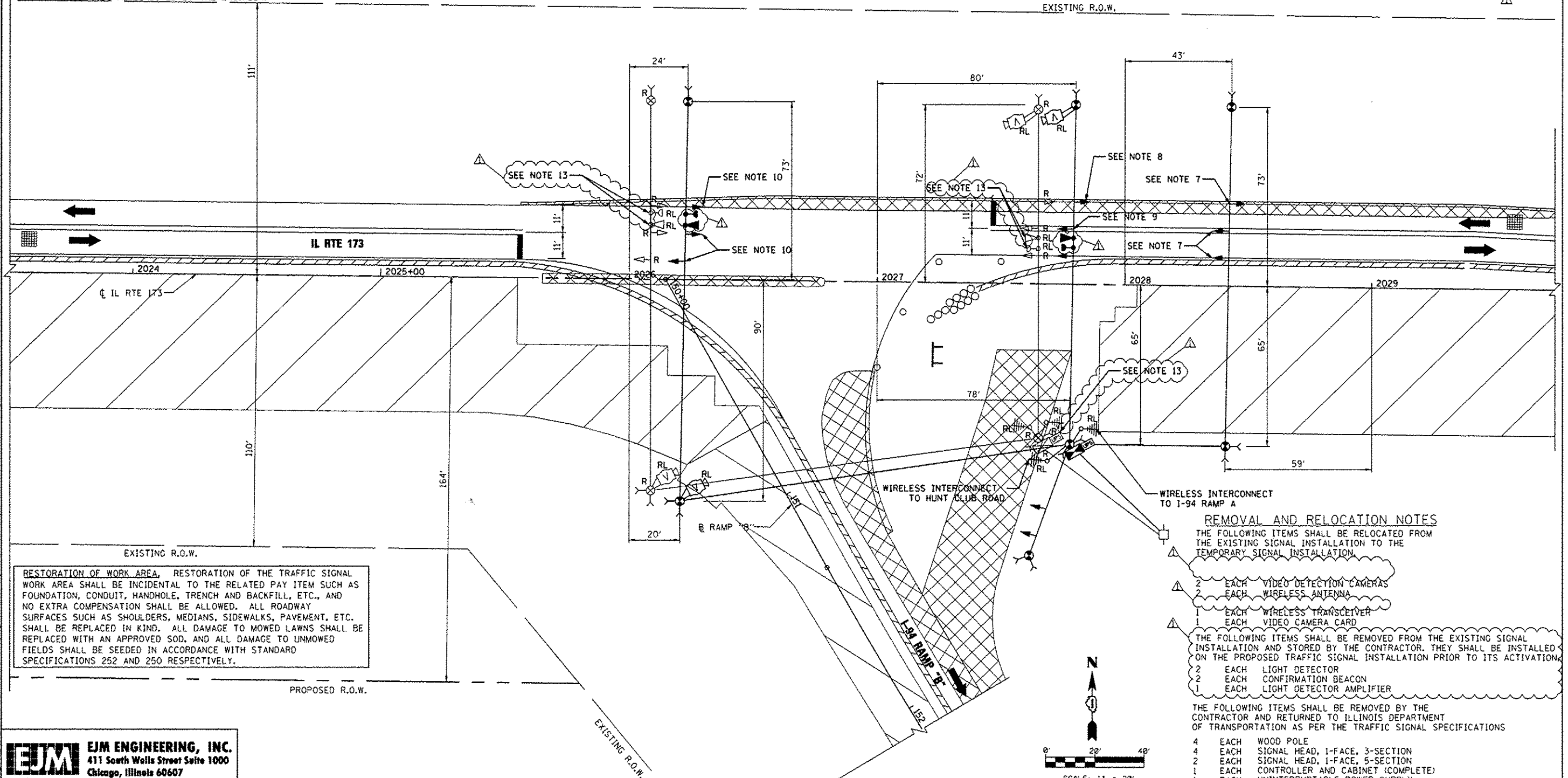


**NOTES FOR TEMPORARY TRAFFIC SIGNALS:**

- ONLY CONTROLLERS SUPPLIED BY ONE OF THE DISTRICT APPROVED CLOSED LOOP EQUIPMENT MANUFACTURERS WILL BE APPROVED FOR USE AT TEMPORARY SIGNAL LOCATIONS. ALL CONTROLLERS USED FOR TEMPORARY TRAFFIC SIGNALS SHALL BE FULLY ACTUATED NEMA MICROPROCESSOR BASED WITH RS232 DATA ENTRY PORTS COMPATIBLE WITH EXISTING MONITORING SOFTWARE APPROVED BY IDOT DISTRICT 1. INSTALLED IN A NEMA TSI OR TS2 CABINET. ONLY ONE BRAND OF CONTROLLER WILL BE ACCEPTED FOR ANY ONE CONTRACT.
- ALL TRAFFIC SIGNAL SECTIONS AND PEDESTRIAN SIGNAL SECTIONS SHALL BE LED AND 12" (300mm) DIAMETER. HEADS SHALL BE PLACED AS INDICATED ON THE TEMPORARY TRAFFIC SIGNAL PLAN OR AS DIRECTED BY THE ENGINEER. PEDESTRIAN SIGNALS SHALL INCLUDE SOLID INTERNATIONAL SYMBOLS. PEDESTRIAN SIGNALS WITH COUNTDOWN TIMERS SHALL BE USED WHEN THE EXISTING INSTALLATION UTILIZES COUNTDOWN TYPE OR AS DIRECTED BY THE ENGINEER. COUNTDOWN TYPE PEDESTRIAN SIGNALS ARE NOT TO BE INSTALLED AT A RAILROAD INTERSECTION. THE CONTRACTOR SHALL FURNISH ENOUGH CABLE SLACK TO RELOCATE HEADS TO ANY POSITION ON THE SPAN WIRE OR AT LOCATIONS ILLUSTRATED ON THE PLANS FOR CONSTRUCTION STAGING. THE TEMPORARY TRAFFIC SIGNAL SHALL REMAIN IN OPERATION DURING ALL SIGNAL HEAD RELOCATIONS. EACH TEMPORARY TRAFFIC SIGNAL HEAD SHALL HAVE ITS OWN CABLE FROM THE CONTROLLER CABINET TO THE SIGNAL HEAD.
- ALL EXISTING STREET NAME AND INTERSECTION REGULATORY SIGNS SHALL BE REMOVED FROM EXISTING POLES, RELOCATED AND SECURELY FASTENED TO THE SIGNAL SPAN WIRE OR WOOD POLE AS DIRECTED BY THE ENGINEER.
- ANY TEMPORARY SIGNAL WITHIN AN EXISTING CLOSED LOOP TRAFFIC SIGNAL SYSTEM SHALL BE INTERCONNECTED TO THAT SYSTEM USING SIMILAR BRAND CONTROL EQUIPMENT.
- TRAFFIC SIGNAL MANAGEMENT SYSTEMS SHALL BE MAINTAINED IN OPERATION AS INDICATED ON THE PLANS OR AS DIRECTED BY THE ENGINEER. REQUIRED EQUIPMENT SHALL BE AS SHOWN ON THE PLANS AND THE CONTRACTOR SHALL PLACE THE EQUIPMENT IN OPERATION TO THE SATISFACTION OF THE ENGINEER AND THE AGENCY RESPONSIBLE FOR THE TRAFFIC SIGNAL MANAGEMENT SYSTEM.
- DETECTION AT TEMPORARY TRAFFIC SIGNALS SHALL BE INCLUDED FOR ALL APPROACHES OF THE INTERSECTION UNLESS INDICATED OTHERWISE ON THE PLANS. THE DETECTION SYSTEM MUST MEET THE SPECIFICATIONS OF DISTRICT 1 AND THE CONTRACTOR SHALL PLACE THE DETECTORS INTO OPERATION TO THE SATISFACTION OF THE ENGINEER.
- SIGNAL HEAD SHALL BE BAGGED AND DE-ENERGIZED DURING STAGES 1A AND 2A. SIGNAL HEAD SHALL BE ACTIVATED DURING STAGE 1B.
- BAG AND DE-ENERGIZE LEFT TURN ARROW SECTIONS FOR THE DURATION OF STAGES 1A AND 2A. ACTIVATE LEFT TURN ARROW SECTIONS FOR THE DURATION OF STAGE 1B.
- BAG AND DE-ENERGIZE LEFT TURN ARROW SECTIONS FOR THE DURATION OF STAGE 1A. ROTATE SIGNAL HEAD TO FACE WESTBOUND TRAFFIC AND ACTIVATE LEFT TURN ARROW SECTIONS DURING STAGE 1B. BAG AND DE-ENERGIZE LEFT TURN ARROW SECTIONS AND ROTATE SIGNAL HEAD TO FACE EASTBOUND TRAFFIC FOR THE DURATION OF STAGE 2A.
- SIGNAL HEADS SHALL BE BAGGED AND DE-ENERGIZED FOR THE DURATION OF STAGE 1B. ACTIVATE DURING STAGES 1A AND 2A.
- CONTRACTOR SHALL PROGRAM A QUEUE DETECTOR FOR THE WESTBOUND LEFT TURN LANE AT THE DIRECTION OF THE ENGINEER FOR ANY STAGES WITHOUT A LEFT TURN LANE.
- RELOCATION OF VIDEO DETECTION EQUIPMENT FROM THE EXISTING SIGNAL INSTALLATION TO THE TEMPORARY TRAFFIC SIGNALS IS INCLUDED IN THE COST FOR TEMPORARY TRAFFIC SIGNAL INSTALLATION.
- CONTRACTOR SHALL REMOVE LIGHT DETECTORS, CONFIRMATION BEACONS, AND LIGHT DETECTOR AMPLIFIER FROM THE EXISTING SIGNAL INSTALLATION. THIS EMERGENCY VEHICLE PREEMPTION EQUIPMENT SHALL BE STORED BY THE CONTRACTOR FOR THE DURATION OF CONSTRUCTION. EQUIPMENT SHALL BE INSTALLED ON THE PROPOSED TRAFFIC SIGNAL PRIOR TO ITS ACTIVATION.

EXISTING R.O.W.

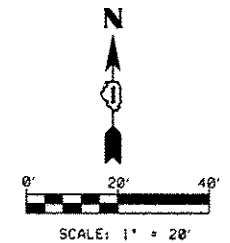


RESTORATION OF WORK AREA, RESTORATION OF THE TRAFFIC SIGNAL WORK AREA SHALL BE INCIDENTAL TO THE RELATED PAY ITEM SUCH AS FOUNDATION, CONDUIT, HANDHOLE, TRENCH AND BACKFILL, ETC., AND NO EXTRA COMPENSATION SHALL BE ALLOWED. ALL ROADWAY SURFACES SUCH AS SHOULDERS, MEDIANS, SIDEWALKS, PAVEMENT, ETC. SHALL BE REPLACED IN KIND. ALL DAMAGE TO MOWED LAWNS SHALL BE REPLACED WITH AN APPROVED SOD, AND ALL DAMAGE TO UNMOWED FIELDS SHALL BE SEED IN ACCORDANCE WITH STANDARD SPECIFICATIONS 252 AND 250 RESPECTIVELY.

**REMOVAL AND RELOCATION NOTES**

- THE FOLLOWING ITEMS SHALL BE RELOCATED FROM THE EXISTING SIGNAL INSTALLATION TO THE TEMPORARY SIGNAL INSTALLATION:
- 2 EACH VIDEO DETECTION CAMERAS
  - 2 EACH WIRELESS ANTENNA
  - 1 EACH WIRELESS TRANSCIVER
  - 1 EACH VIDEO CAMERA CARD
- THE FOLLOWING ITEMS SHALL BE REMOVED FROM THE EXISTING SIGNAL INSTALLATION AND STORED BY THE CONTRACTOR. THEY SHALL BE INSTALLED ON THE PROPOSED TRAFFIC SIGNAL INSTALLATION PRIOR TO ITS ACTIVATION:
- 2 EACH LIGHT DETECTOR
  - 2 EACH CONFIRMATION BEACON
  - 1 EACH LIGHT DETECTOR AMPLIFIER

- THE FOLLOWING ITEMS SHALL BE REMOVED BY THE CONTRACTOR AND RETURNED TO ILLINOIS DEPARTMENT OF TRANSPORTATION AS PER THE TRAFFIC SIGNAL SPECIFICATIONS:
- 4 EACH WOOD POLE
  - 4 EACH SIGNAL HEAD, 1-FACE, 3-SECTION
  - 2 EACH SIGNAL HEAD, 1-FACE, 5-SECTION
  - 1 EACH CONTROLLER AND CABINET (COMPLETE)
  - 1 EACH UNINTERRUPTABLE POWER SUPPLY



**EJM ENGINEERING, INC.**  
411 South Wells Street Suite 1000  
Chicago, Illinois 60607

FILE NAME *	USER NAME = grol	DESIGNED - GR	REVISED - 7/17/12 BKS
		DRAWN - GR	REVISED -
		CHECKED - BKS	REVISED -
		DATE - 06/19/2012	REVISED -

**STATE OF ILLINOIS  
DEPARTMENT OF TRANSPORTATION**

**TEMPORARY TRAFFIC SIGNAL INSTALLATION  
IL RTE 173 AT I-94 RAMP "B" - STAGE 1A**

SCALE: 1" = 20'    SHEET NO. 1 OF 1 SHEETS    STA. 2023+52 TO STA. 2029+75

F.A.I. RTE.	SECTION	COUNTY	TOTAL SHEETS	SHEET NO.
94	49-1-R-1	LAKE	677	339
CONTRACT NO. 60L77			ILLINOIS FED. AID PROJECT	

TS-08