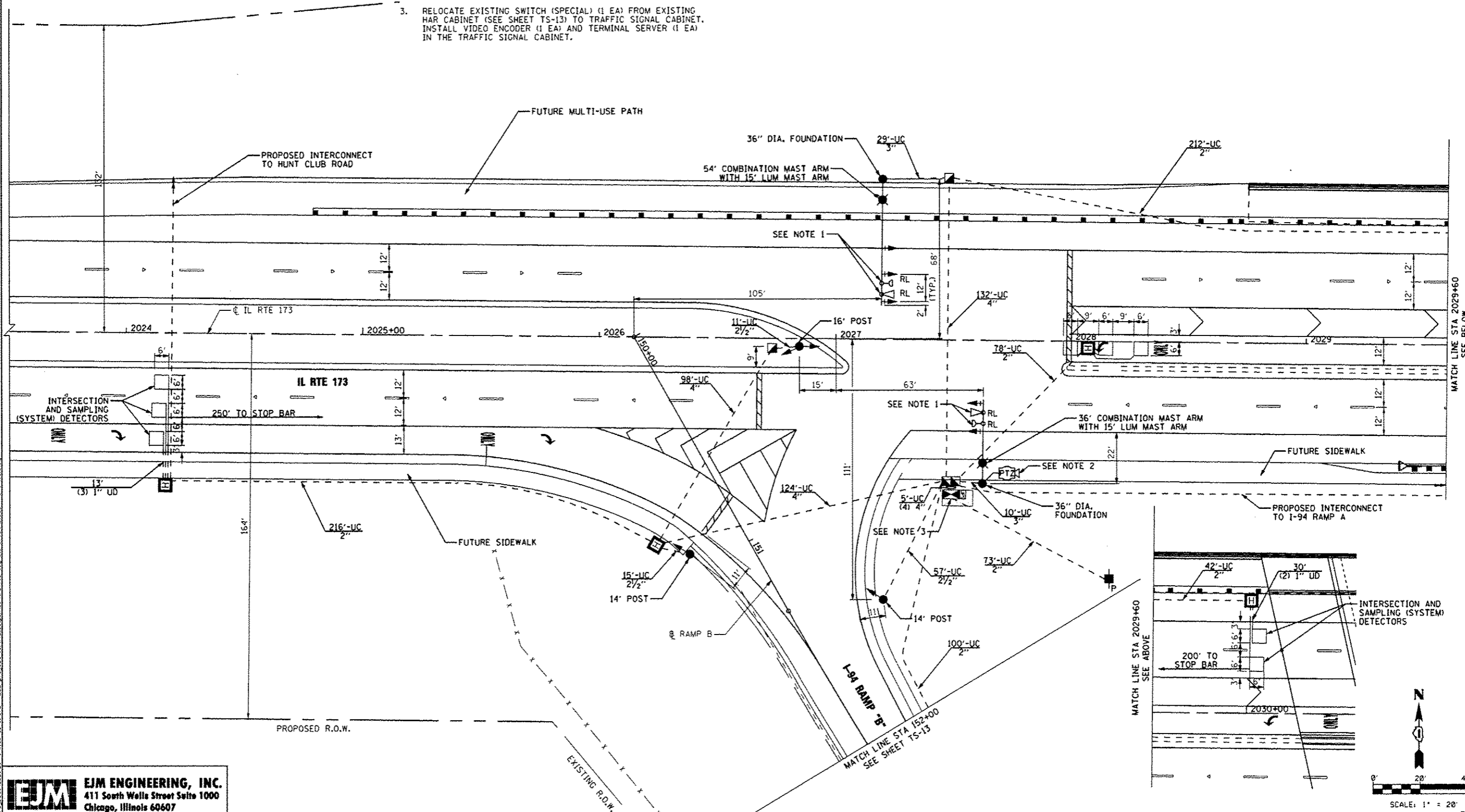


RESTORATION OF WORK AREA, RESTORATION OF THE TRAFFIC SIGNAL WORK AREA SHALL BE INCIDENTAL TO THE RELATED PAY ITEM SUCH AS FOUNDATION, CONDUIT, HANDHOLE, TRENCH AND BACKFILL, ETC., AND NO EXTRA COMPENSATION SHALL BE ALLOWED. ALL ROADWAY SURFACES SUCH AS SHOULDERS, MEDIANS, SIDEWALKS, PAVEMENT, ETC. SHALL BE REPLACED IN KIND. ALL DAMAGE TO MOWED LAWNS SHALL BE REPLACED WITH AN APPROVED SOG. AND ALL DAMAGE TO UNMOWED FIELDS SHALL BE SEEDED IN ACCORDANCE WITH STANDARD SPECIFICATIONS 252 AND 250 RESPECTIVELY.

- NOTES:
- EMERGENCY VEHICLE PREEMPTION EQUIPMENT SHALL BE REMOVED FROM EXISTING SIGNAL INSTALLATION, STORED BY THE CONTRACTOR FOR THE DURATION OF CONSTRUCTION, AND INSTALLED ON PROPOSED TRAFFIC SIGNAL INSTALLATION PRIOR TO ITS ACTIVATION.
 - THE PTZ CAMERA SHALL BE MOUNTED ON THE LUMINAIRE MAST ARM AS DIRECTED BY THE ENGINEER. PTZ MOUNTING TO BE COORDINATED WITH LAKE COUNTY DIVISION OF TRANSPORTATION.
 - RELOCATE EXISTING SWITCH (SPECIAL) (1 EA) FROM EXISTING HAR CABINET (SEE SHEET TS-13) TO TRAFFIC SIGNAL CABINET. INSTALL VIDEO ENCODER (1 EA) AND TERMINAL SERVER (1 EA) IN THE TRAFFIC SIGNAL CABINET.



I:\projects\3831\3831.dwg to I:\173 - New York\173\work\173\173.dwg
 I:\projects\3831\3831.dwg to I:\173 - New York\173\work\173\173.dwg
 I:\projects\3831\3831.dwg to I:\173 - New York\173\work\173\173.dwg

EJM ENGINEERING, INC.
 411 South Wells Street Suite 1000
 Chicago, Illinois 60607

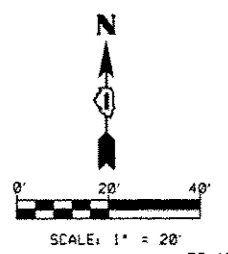
FILE NAME *	USER NAME = gral	DESIGNED - GR	REVISED Δ 7/17/12 BKS
		DRAWN - GR	REVISED -
		CHECKED - BKS	REVISED -
		DATE - 06/19/2012	REVISED -

**STATE OF ILLINOIS
 DEPARTMENT OF TRANSPORTATION**

**TRAFFIC SIGNAL INSTALLATION
 IL RTE 173 AT I-94 RAMP "B"**

SCALE: 1" = 20' SHEET NO. 1 OF 1 SHEETS STA. 2023+52 TO STA. 2030+46

F.A.I. RTE.	SECTION	COUNTY	TOTAL SHEETS	SHEET NO.
94	49-1-R-1	LAKE	677	343
CONTRACT NO. 60L77			ILLINOIS FED. AID PROJECT	



MATCH LINE STA 2029+60
SEE BELOW

MATCH LINE STA 2029+60
SEE ABOVE

TS-12