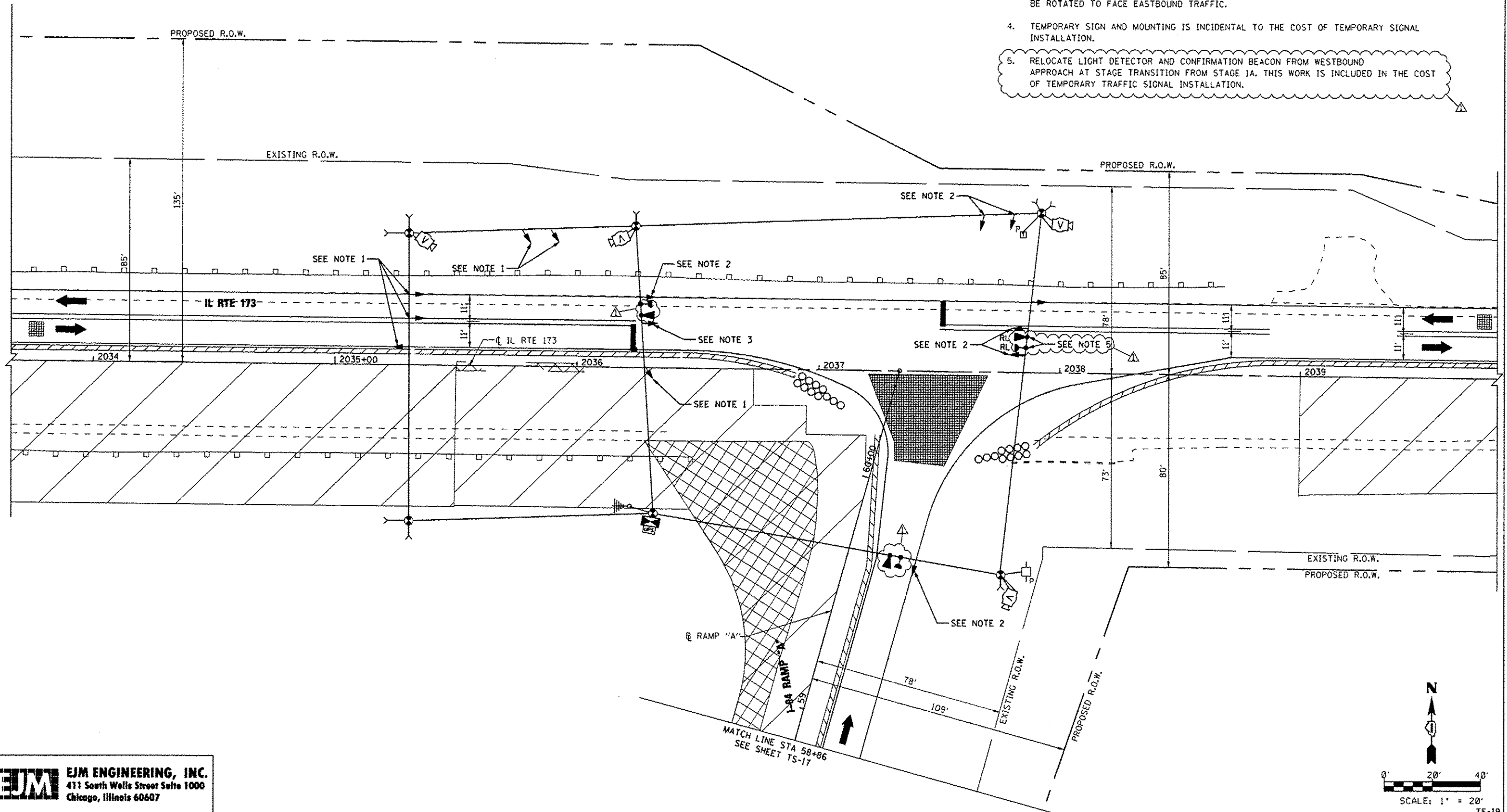


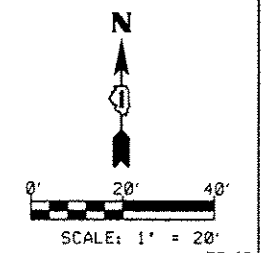
NOTES:

1. SIGNAL HEAD SHALL BE BAGGED AND DE-ENERGIZED PRIOR TO ACTIVATION OF THIS STAGE.
2. SIGNAL HEAD SHALL BE BAGGED AND DE-ENERGIZED AT THE END OF THIS STAGE, PRIOR TO BEGINNING OF STAGE 1C.
3. SIGNAL HEAD SHALL BE ROTATED TO FACE WESTBOUND TRAFFIC DURING THIS STAGE. AT THE END OF THIS STAGE AND PRIOR TO BEGINNING OF STAGE 1C, SIGNAL HEAD SHALL BE ROTATED TO FACE EASTBOUND TRAFFIC.
4. TEMPORARY SIGN AND MOUNTING IS INCIDENTAL TO THE COST OF TEMPORARY SIGNAL INSTALLATION.
5. RELOCATE LIGHT DETECTOR AND CONFIRMATION BEACON FROM WESTBOUND APPROACH AT STAGE TRANSITION FROM STAGE 1A. THIS WORK IS INCLUDED IN THE COST OF TEMPORARY TRAFFIC SIGNAL INSTALLATION.



s:\projects\3031 us 41-usse to il 173 - bba\project work\discipline\traffic signals\sheet\1684.77-traffic.rxdwg

EJM ENGINEERING, INC.
 411 South Wells Street Suite 1000
 Chicago, Illinois 60607



FILE NAME *	USER NAME * grol	DESIGNED - GR	REVISED Δ 7/17/12 BKS
		DRAWN - GR	REVISED -
		CHECKED - BKS	REVISED -
PLOT SCALE * 40.0000' / IN.	DATE * 06/19/2012		
PLOT DATE * 7/16/2012			

STATE OF ILLINOIS
DEPARTMENT OF TRANSPORTATION

TEMPORARY TRAFFIC SIGNAL INSTALLATION
IL RTE 173 AT I-94 RAMP "A" - STAGE 1B

SCALE: 1" = 20' SHEET NO. 1 OF 2 SHEETS STA. 2033+67 TO STA. 2039+83

F.A.I. RTE.	SECTION	COUNTY	TOTAL SHEETS	SHEET NO.
94	49-1-R-1	LAKE	677	350
CONTRACT NO. 60L77			ILLINOIS FED. AID PROJECT	

TS-19