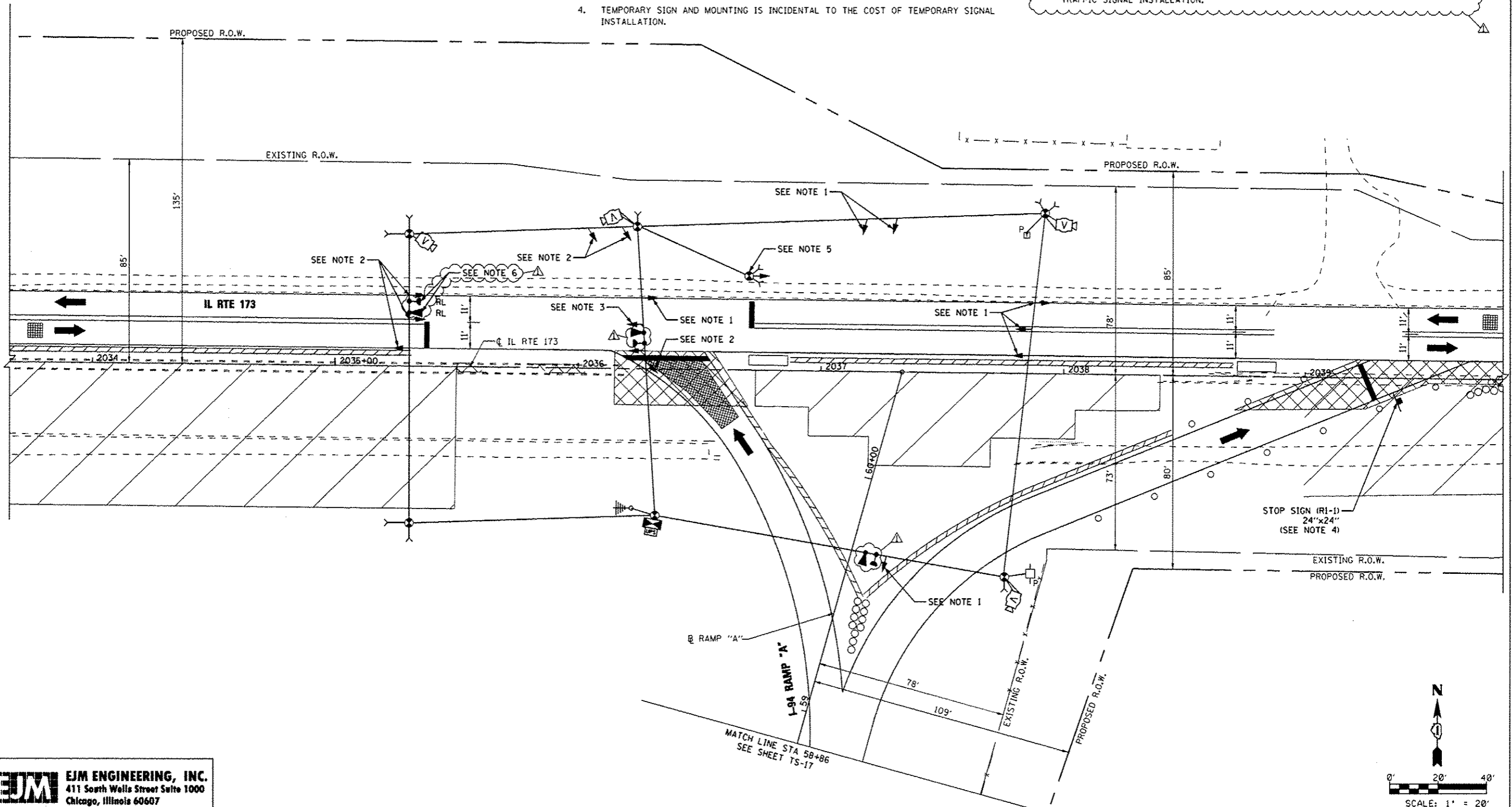


**NOTES:**

1. SIGNAL HEAD SHALL BE BAGGED AND DE-ENERGIZED PRIOR TO ACTIVATION OF THIS STAGE.
2. SIGNAL HEAD SHALL BE BAGGED AND DE-ENERGIZED AT THE END OF THIS STAGE, PRIOR TO BEGINNING OF STAGE 2A.
3. SIGNAL HEAD SHALL BE ROTATED TO FACE EASTBOUND TRAFFIC DURING THIS STAGE. AT THE END OF THIS STAGE AND PRIOR TO BEGINNING OF STAGE 1C, SIGNAL HEAD SHALL BE ROTATED TO FACE WESTBOUND TRAFFIC.
4. TEMPORARY SIGN AND MOUNTING IS INCIDENTAL TO THE COST OF TEMPORARY SIGNAL INSTALLATION.
5. INSTALL TEMPORARY WOOD POLE, SIGNAL HEAD, SPAN WIRE, CABLE AND ALL APPURTENANCES PRIOR TO ACTIVATION OF STAGE 1C. INSTALL "STOP HERE ON RED" SIGN R10-6 (24"x36") ON WOOD POLE. AT THE END OF THIS STAGE, PRIOR TO ACTIVATION OF STAGE 2A, REMOVE THE SIGNAL HEAD AND SIGN PANEL. REMOVE WOOD POLE, SPAN WIRE AND CABLE AFTER STAGE 1C. THIS WORK, INCLUDING ALL MATERIAL AND LABOR, SHALL BE INCLUDED IN THE COST OF TEMPORARY SIGNAL INSTALLATION.
6. RELOCATE LIGHT DETECTOR AND CONFIRMATION BEACON FROM EASTBOUND APPROACH AT STAGE TRANSITION FROM STAGE 1B. THIS WORK IS INCLUDED IN THE COST OF TEMPORARY TRAFFIC SIGNAL INSTALLATION.



s:\projects\3831 in 41\173 - 85a\p02.mxd work\disciplines\traffic\_signals\sheet\173-17-19a.dgn

**EJM ENGINEERING, INC.**  
 411 South Wells Street Suite 1000  
 Chicago, Illinois 60607

FILE NAME *	USER NAME = grol	DESIGNED = GR	REVISED $\Delta$ 7/17/12 BKS
		DRAWN = GR	REVISED -
	PLOT SCALE = 40.0000 / IN.	CHECKED = BKS	REVISED -
	PLOT DATE = 7/16/2012	DATE = 06/19/2012	REVISED -

**STATE OF ILLINOIS**  
**DEPARTMENT OF TRANSPORTATION**

**TEMPORARY TRAFFIC SIGNAL INSTALLATION**  
**IL RTE 173 AT I-94 RAMP "A" - STAGE 1C**

SCALE: 1" = 20'    SHEET NO. 1 OF 2 SHEETS    STA. 2033+67 TO STA. 2039+83

F.A.I. RTE.	SECTION	COUNTY	TOTAL SHEETS	SHEET NO.
94	49-1-R-1	LAKE	677	350A
			CONTRACT NO. 60L77	
ILLINOIS FED. AID PROJECT				

TS-19A