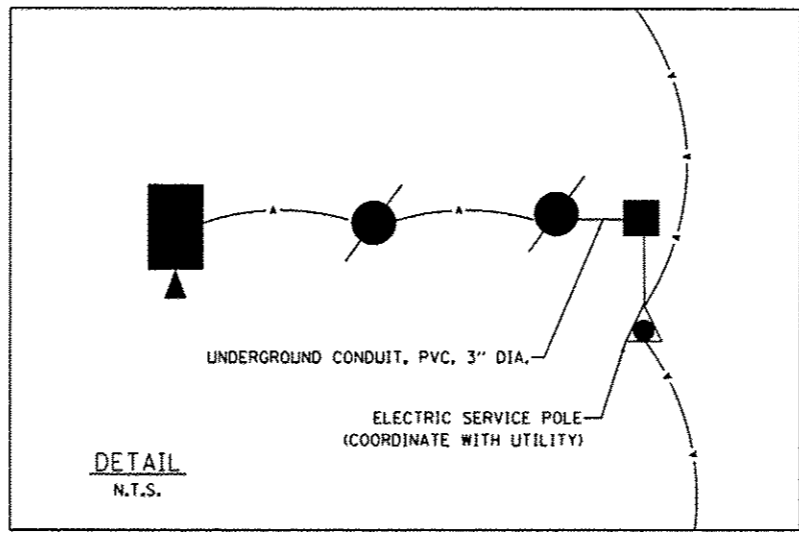
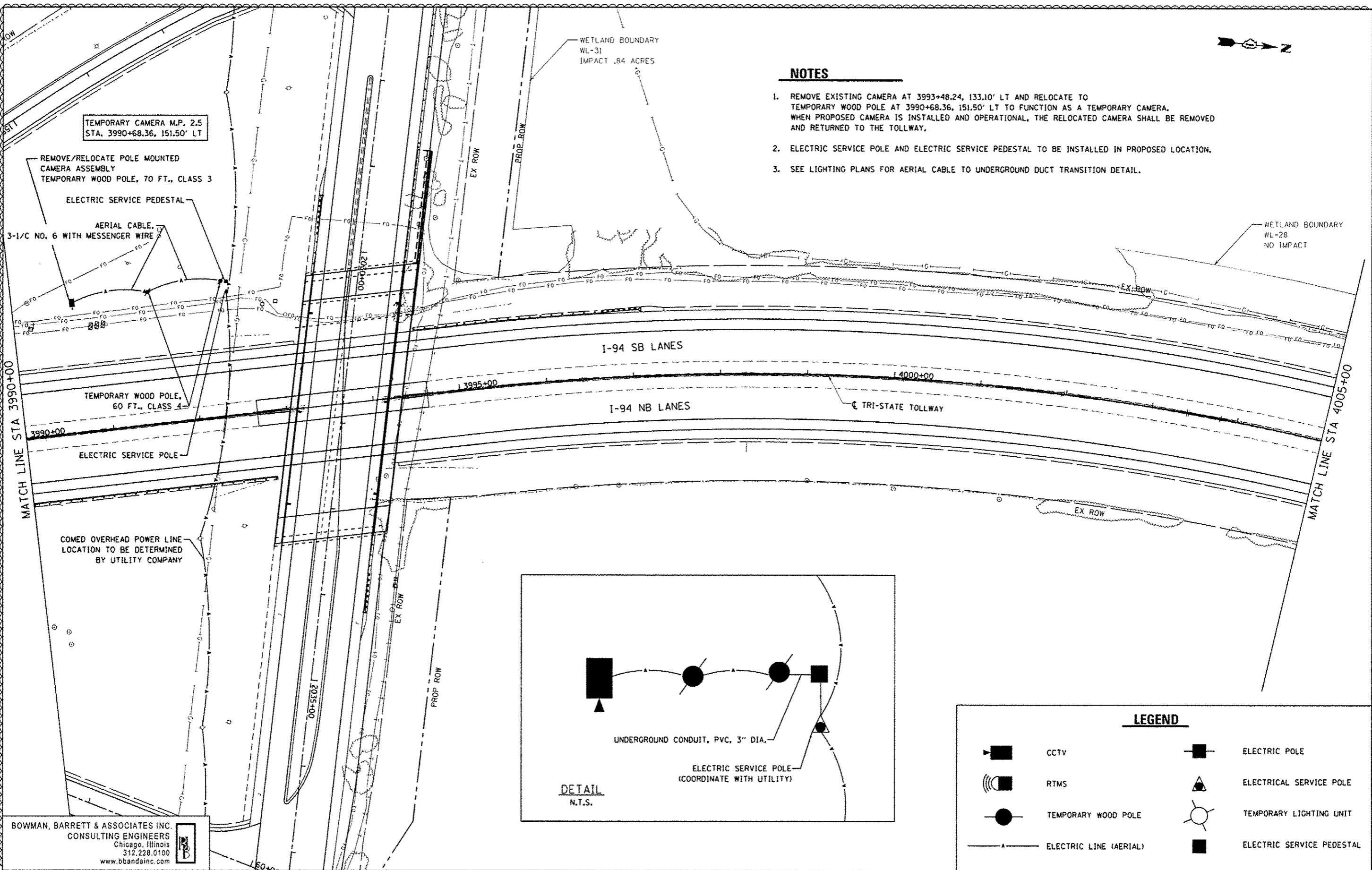




NOTES

1. REMOVE EXISTING CAMERA AT 3993+48.24, 133.10' LT AND RELOCATE TO TEMPORARY WOOD POLE AT 3990+68.36, 151.50' LT TO FUNCTION AS A TEMPORARY CAMERA. WHEN PROPOSED CAMERA IS INSTALLED AND OPERATIONAL, THE RELOCATED CAMERA SHALL BE REMOVED AND RETURNED TO THE TOLLWAY.
2. ELECTRIC SERVICE POLE AND ELECTRIC SERVICE PEDESTAL TO BE INSTALLED IN PROPOSED LOCATION.
3. SEE LIGHTING PLANS FOR AERIAL CABLE TO UNDERGROUND DUCT TRANSITION DETAIL.



LEGEND

	CCTV		ELECTRIC POLE
	RTMS		ELECTRICAL SERVICE POLE
	TEMPORARY WOOD POLE		TEMPORARY LIGHTING UNIT
	ELECTRIC LINE (AERIAL)		ELECTRIC SERVICE PEDESTAL

BOWMAN, BARRETT & ASSOCIATES INC.
CONSULTING ENGINEERS
Chicago, Illinois
312.228.0100
www.bbainc.com

FILE NAME: *FILES*	USER NAME: default	DESIGNED: JMG	REVISED 1: 7/17/2012 JMG
		DRAWN: JMG	REVISED:
		CHECKED: RGR	REVISED:
		DATE: 6/19/2012	REVISED:

STATE OF ILLINOIS
DEPARTMENT OF TRANSPORTATION

TEMPORARY ITS PLAN NB I-94 AND SB I-94
SCALE: 1"=50' SHEET NO. 1 OF 4 SHEETS STA. 3990+00 TO STA. 4005+00

P.W. RTE. 94	SECTION 49-1-R-1	COUNTY LAKE	TOTAL SHEETS 677	SHEET NO. 415
CONTRACT NO. 60L77				ILLINOIS FED. AID PROJECT