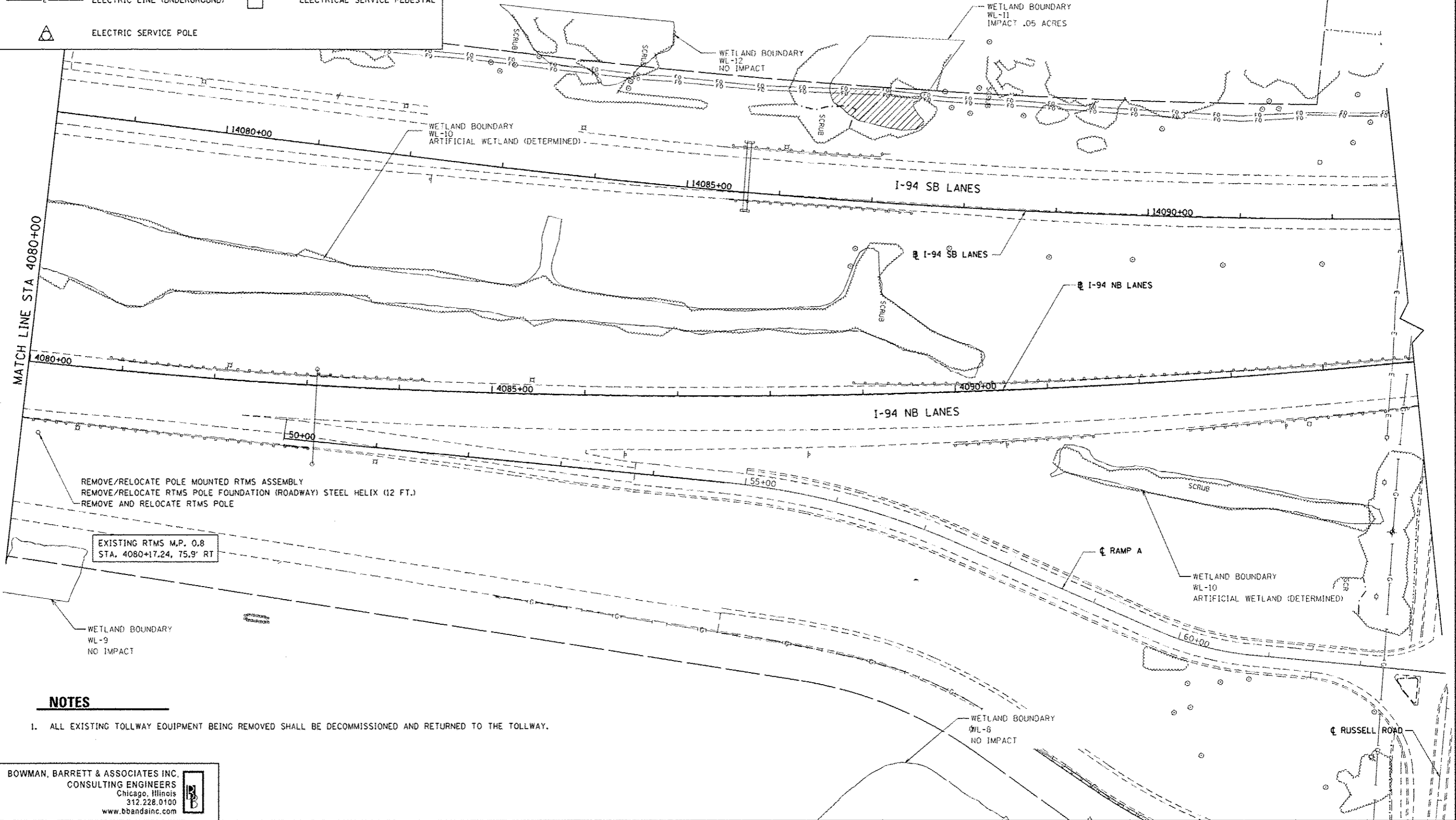
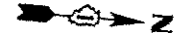


LEGEND

- CCTV OR RTMS
- HANDHOLE (EXISTING)
- E — ELECTRIC LINE (UNDERGROUND)
- △ ELECTRIC SERVICE POLE
- FO — FIBER OPTIC LINE
- ELECTRICAL POWER POLE
- ELECTRICAL SERVICE PEDESTAL



REMOVE/RELOCATE POLE MOUNTED RTMS ASSEMBLY
 REMOVE/RELOCATE RTMS POLE FOUNDATION (ROADWAY) STEEL HELIX (12 FT.)
 REMOVE AND RELOCATE RTMS POLE

EXISTING RTMS M.P. 0.8
 STA. 4080+17.24, 75.9' RT

NOTES

1. ALL EXISTING TOLLWAY EQUIPMENT BEING REMOVED SHALL BE DECOMMISSIONED AND RETURNED TO THE TOLLWAY.

BOWMAN, BARRETT & ASSOCIATES INC.
 CONSULTING ENGINEERS
 Chicago, Illinois
 312.228.0100
 www.bbainc.com

FILE NAME: 4FILES4	USER NAME: default	DESIGNED: JMG	REVISED: 7/17/2012 JMG
		DRAWN: JMG	REVISED:
		CHECKED: RGR	REVISED:
		DATE: 6/19/2012	REVISED:

**STATE OF ILLINOIS
 DEPARTMENT OF TRANSPORTATION**

ITS REMOVAL PLAN NB I-94 AND SB I-94

SCALE: 1"=50' SHEET NO. 6 OF 6 SHEETS STA. 4080+00 TO STA. 4095+00

P.A. RTE. 94	SECTION 49-1-R-1	COUNTY LAKE	TOTAL SHEETS 677	SHEET NO. 424
CONTRACT NO. 60L77				
ILLINOIS FED. AID PROJECT				