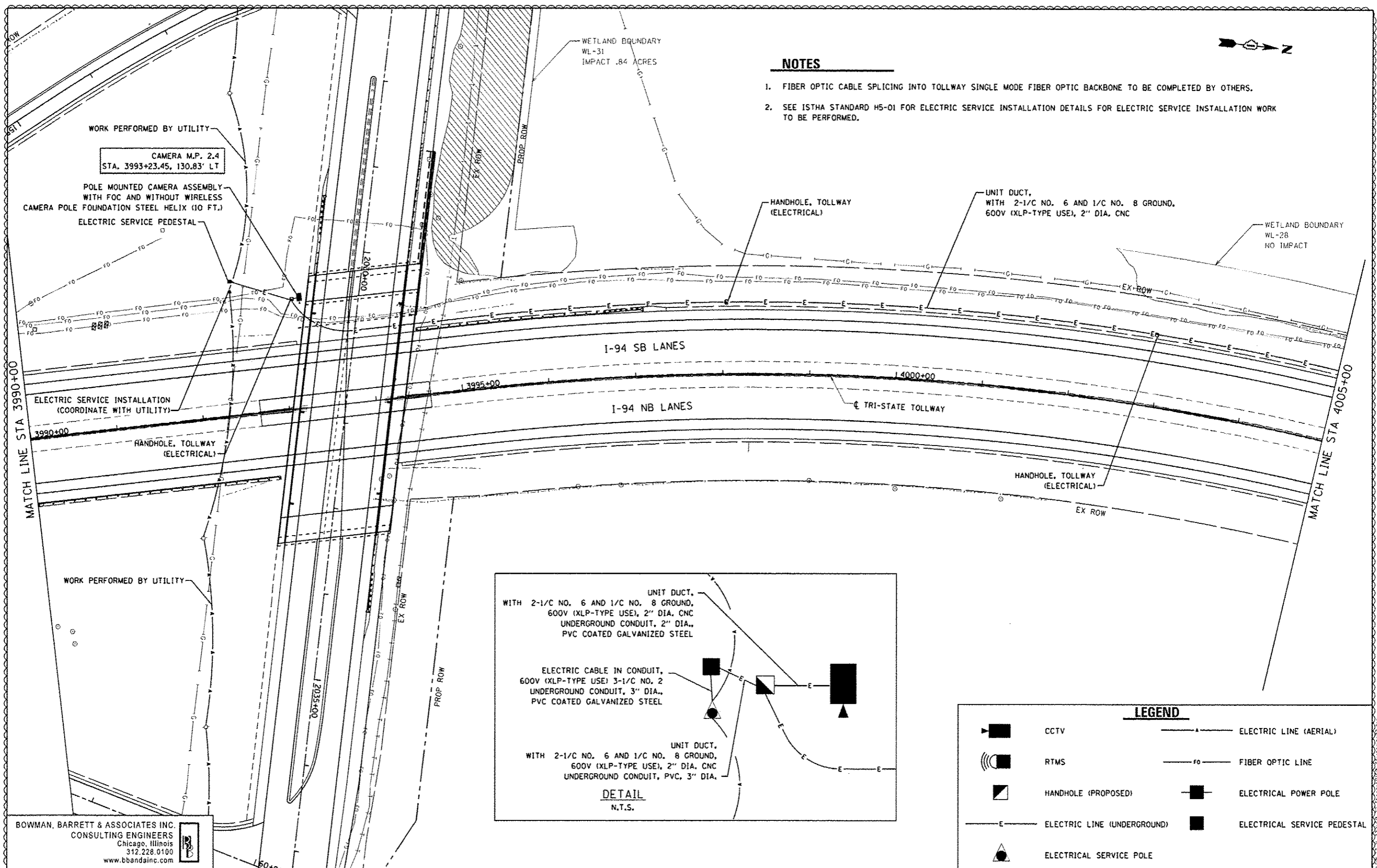




**NOTES**

1. FIBER OPTIC CABLE SPLICING INTO TOLLWAY SINGLE MODE FIBER OPTIC BACKBONE TO BE COMPLETED BY OTHERS.
2. SEE ISTHA STANDARD H5-01 FOR ELECTRIC SERVICE INSTALLATION DETAILS FOR ELECTRIC SERVICE INSTALLATION WORK TO BE PERFORMED.



CAMERA M.P. 2.4  
STA. 3993+23.45, 130.83' LT

POLE MOUNTED CAMERA ASSEMBLY  
WITH FOC AND WITHOUT WIRELESS  
CAMERA POLE FOUNDATION STEEL HELIX (10 FT.)  
ELECTRIC SERVICE PEDESTAL

WETLAND BOUNDARY  
WL-31  
IMPACT .84 ACRES

UNIT DUCT,  
WITH 2-1/2 NO. 6 AND 1/2 NO. 8 GROUND,  
600V (XLP-TYPE USE), 2" DIA. CNC

WETLAND BOUNDARY  
WL-28  
NO IMPACT

I-94 SB LANES

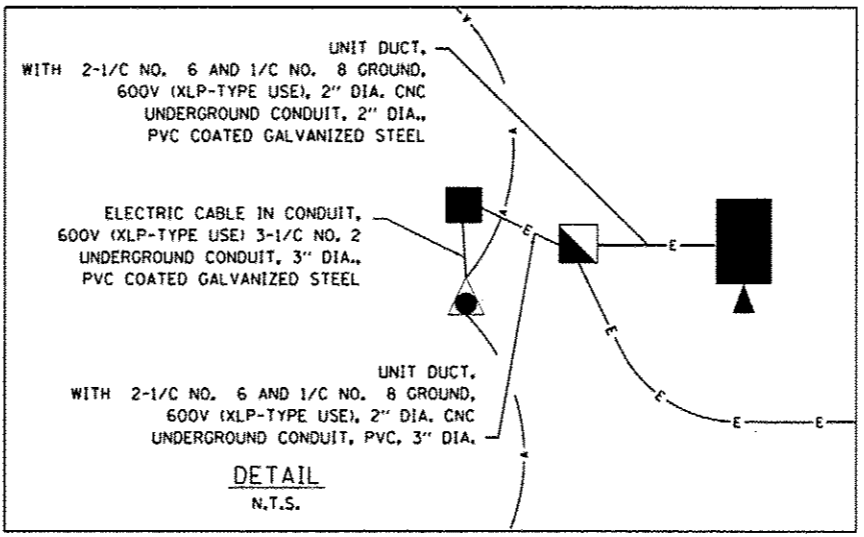
I-94 NB LANES

TRI-STATE TOLLWAY

MATCH LINE STA 3990+00

MATCH LINE STA 4005+00

WORK PERFORMED BY UTILITY



BOWMAN, BARRETT & ASSOCIATES INC.  
CONSULTING ENGINEERS  
Chicago, Illinois  
312.228.0100  
www.bbandainc.com

|                            |                    |                 |                          |
|----------------------------|--------------------|-----------------|--------------------------|
| FILE NAME: 4FILES          | USER NAME: default | DESIGNED: JMC   | REVISED 1: 7/17/2012 JMC |
|                            |                    | DRAWN: JMC      | REVISED:                 |
| PLOT SCALE: 1/4"=10' 3/16" |                    | CHECKED: RGR    | REVISED:                 |
| PLOT DATE: 7/17/2012       |                    | DATE: 6/19/2012 | REVISED:                 |

STATE OF ILLINOIS  
DEPARTMENT OF TRANSPORTATION

ITS PLAN NB I-94 AND SB I-94  
SCALE: 1"=50' SHEET NO. 1 OF 4 SHEETS STA. 3990+00 TO STA. 4005+00

**LEGEND**

|  |                             |  |                             |
|--|-----------------------------|--|-----------------------------|
|  | CCTV                        |  | ELECTRIC LINE (AERIAL)      |
|  | RTMS                        |  | FIBER OPTIC LINE            |
|  | HANDHOLE (PROPOSED)         |  | ELECTRICAL POWER POLE       |
|  | ELECTRIC LINE (UNDERGROUND) |  | ELECTRICAL SERVICE PEDESTAL |
|  | ELECTRICAL SERVICE POLE     |  |                             |

|                           |                  |             |                  |                    |
|---------------------------|------------------|-------------|------------------|--------------------|
| P.C. RTE. 94              | SECTION 49-1-R-1 | COUNTY LAKE | TOTAL SHEETS 677 | SHEET NO. 425      |
|                           |                  |             |                  | CONTRACT NO. 60L77 |
| ILLINOIS FED. AID PROJECT |                  |             |                  |                    |