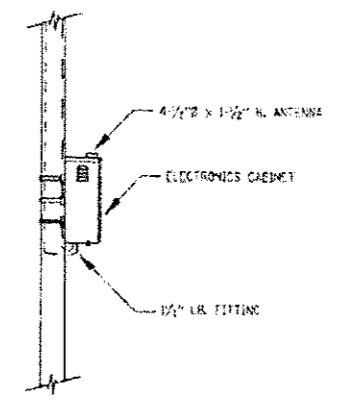


TYPICAL RTMS INSTALLATION
NOTE 5

NOTES

1. SOLAR PANELS SHALL BE OPENED 186 DEGREES FROM MAGNETIC NORTH AND SHALL BE TILTED 55 DEGREES (+/- 0 DEGREES) FROM THE HORIZON.
2. MOUNT CABINET ON SIDE OF POLE DOWNSTREAM OF TRAFFIC WHERE PRACTICAL.
3. SENSOR SETBACK IS MEASURED FROM THE NEAREST EDGE OF THE NEAREST TRAVEL LANE.
4. GROUND CABINET TO POLE UTILIZING #12 STRANDED WIRE. ATTACHMENT TO POLE SHALL UTILIZE A 1/4" STAINLESS STEEL HEX HEAD NUT AND BOLT AND RING CONNECTOR, ROUTE GROUND WIRE INTERNAL TO POLE.
5. SEE ITS PLAN SHEETS FOR SENSOR OFFSET. SENSOR MUST BE MOUNTED AT THE TOP OF THE POLE TO ACHIEVE THE DESIRED 30' MOUNTING HEIGHT ABOVE PAVEMENT. WHEN PROTECTED BY GUARDRAIL THE POLE AND SENSOR SHOULD BE SET BACK 20'.
6. ALL LOCATIONS MUST BE STAKED IN THE FIELD BY THE CONTRACTOR PRIOR TO INSTALLATION OF THE POLE FOUNDATION. THE ENGINEER WILL CONFIRM SET BACK AND APPROVE LOCATION AND VERIFY SENSOR MOUNTING HEIGHT TO PROVIDE OPTIMUM COVERAGE IN ACCORDANCE WITH THE MANUFACTURER'S USER GUIDE LINES.



SECTION A-A

BOWMAN, BARRETT & ASSOCIATES INC.
CONSULTING ENGINEERS
Chicago, Illinois
312.228.0100
www.bbainc.com

FILE NAME: 4FILES.d	USER NAME: default	DESIGNED: JMC	REVISED: 1/17/2012 JMC
		DRAWN: JMC	REVISED: -
		CHECKED: RGR	REVISED: -
		DATE: 6/19/2012	REVISED: -

STATE OF ILLINOIS
DEPARTMENT OF TRANSPORTATION

SCALE:		SHEET NO. 5 OF 8 SHEETS		STA. N/A	TO STA. N/A
--------	--	-------------------------	--	----------	-------------

F.W. RTE.	SECTION	COUNTY	TOTAL SHEETS	SHEET NO.
94	49-1-R-1	LAKE	677	433
ILLINOIS FED. AID PROJECT			CONTRACT NO. 60L77	