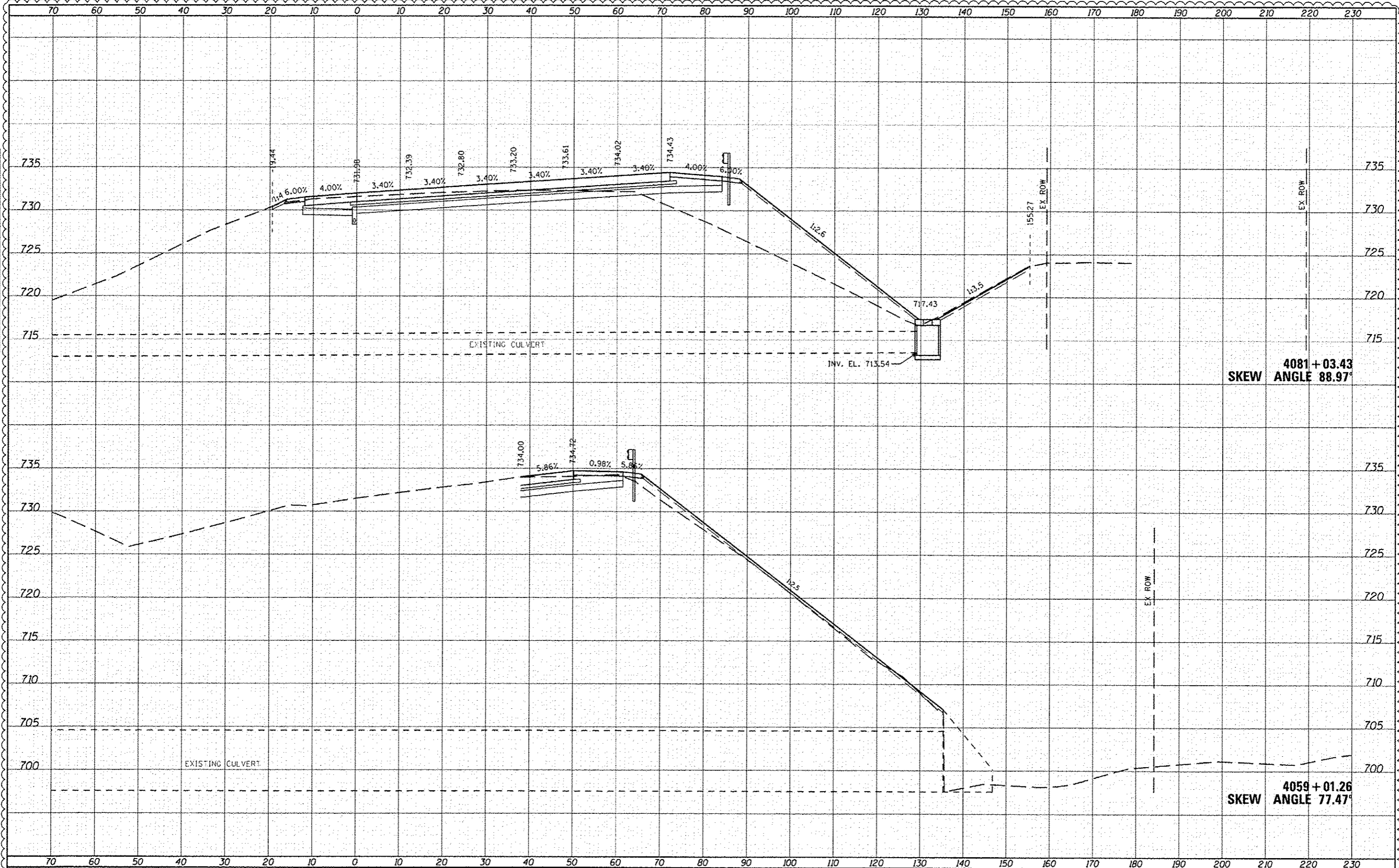


DATE	
BY	
FINAL SURVEY	
NOTE BOOK	
AREAS CHECKED	

DATE	
BY	
ORIGINAL SURVEY	
NOTE BOOK	
AREAS CHECKED	



FILE NAME: D:\DBL\77-SHT-XSC\_Culverts.dgn

USER NAME	default
DESIGNED	-
DRAWN	-
CHECKED	-
DATE	-
REVISED	7/17/12 RGR
REVISED	-
REVISED	-
REVISED	-

STATE OF ILLINOIS  
DEPARTMENT OF TRANSPORTATION

CROSS SECTIONS  
CULVERTS (NB I-94 BASELINE)

SCALE: 1" = 10'  
SHEET 110B OF 110 SHEETS STA. 4059+01.26 TO STA. 4081+03.43

F.A. RTE.	SECTION	COUNTY	TOTAL SHEETS	SHEET NO.
94	49-1-R-1	LAKE	677	603N
ILLINOIS FED. AID PROJECT			CONTRACT NO. 60L77	