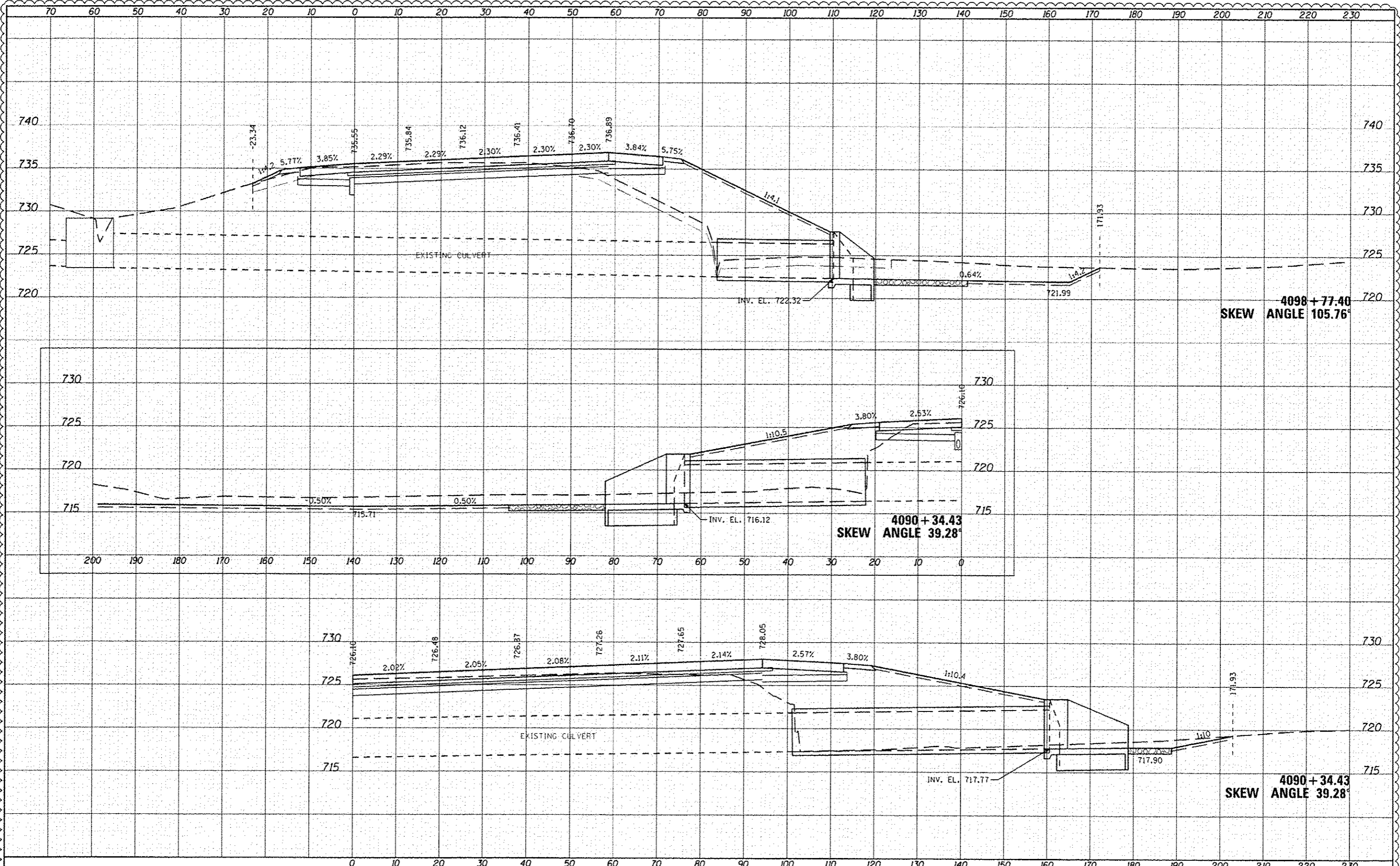


DATE	
BY	
SUPPLEMENTED	
SURVEY	
TEMPORARY	
NOTES BOOK	
AREAS CHECKED	
NO.	

DATE	
BY	
SUPPLEMENTED	
SURVEY	
TEMPORARY	
NOTES BOOK	
AREAS CHECKED	
NO.	



FILE NAME: C:\E\77-541-XSC_Culverts.dgn	USER NAME: default	DESIGNED: -	REVISED: 7/17/12 RGR	STATE OF ILLINOIS DEPARTMENT OF TRANSPORTATION	CROSS SECTIONS CULVERTS (NB I-94 BASELINE)		F.A. RTE. 94	SECTION 49-1-R-1	COUNTY LAKE	TOTAL SHEETS 677	SHEET NO. 6030	
	PLG: SCALE = 1/4" = 1'-0"	DRAWN: -	REVISED: -		SCALE: 1/4" = 1'-0"	SHEET 110C OF 110 SHEETS	STA. 4090+34.43 TO STA. 4098+77.40			CONTRACT NO. 60L77		
	PLG: DATE = 7/17/2012	CHECKED: -	REVISED: -									
		DATE: -	REVISED: -									

ILLINOIS FED. AID PROJECT