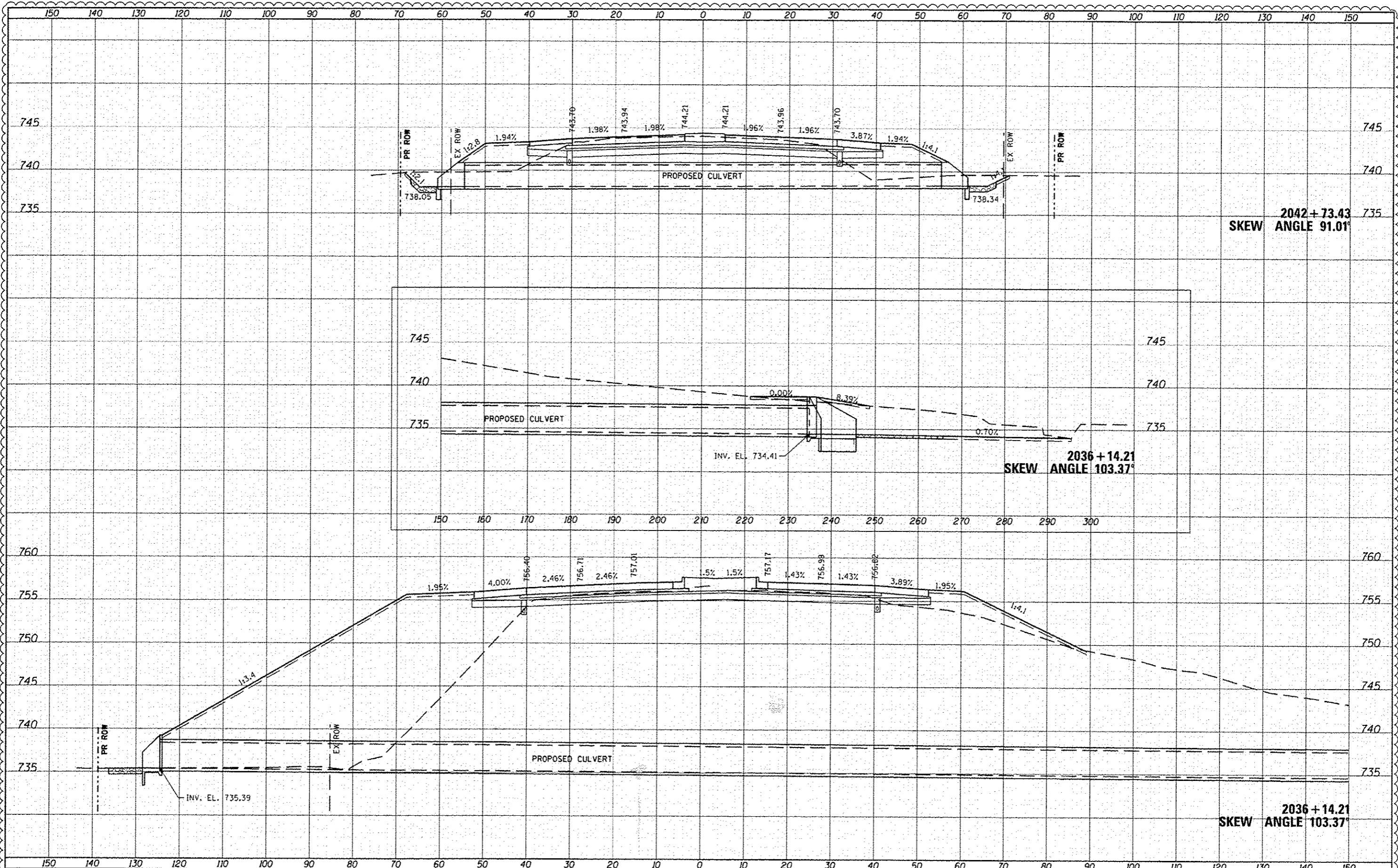


DATE	
BY	
APPROVED	
PROJECT	
DATE	
NO. OF SHEETS	
DATE	
NO. OF SHEETS	
DATE	
NO. OF SHEETS	
DATE	
NO. OF SHEETS	
DATE	
NO. OF SHEETS	

DATE	
BY	
APPROVED	
PROJECT	
DATE	
NO. OF SHEETS	
DATE	
NO. OF SHEETS	
DATE	
NO. OF SHEETS	
DATE	
NO. OF SHEETS	



FILE NAME: D:\E\77-SHT-KSC\Culverts.dgn
 USER NAME: default

DESIGNED -	REVISED 7/17/12 RGR
DRAWN -	REVISED -
CHECKED -	REVISED -
DATE -	REVISED -

STATE OF ILLINOIS
 DEPARTMENT OF TRANSPORTATION

CROSS SECTIONS
 CULVERTS (IL-173 BASELINE)
 SCALE: H 1" = 10' V 1" = 4'
 SHEET 110E OF 110 SHEETS STA. 2036+14.21 TO STA. 2042+73.43

F.A. RTE.	SECTION	COUNTY	TOTAL SHEETS	SHEET NO.
94	49-1-R-1	LAKE	677	6030
CONTRACT NO. 60L77				ILLINOIS FED. AID PROJECT