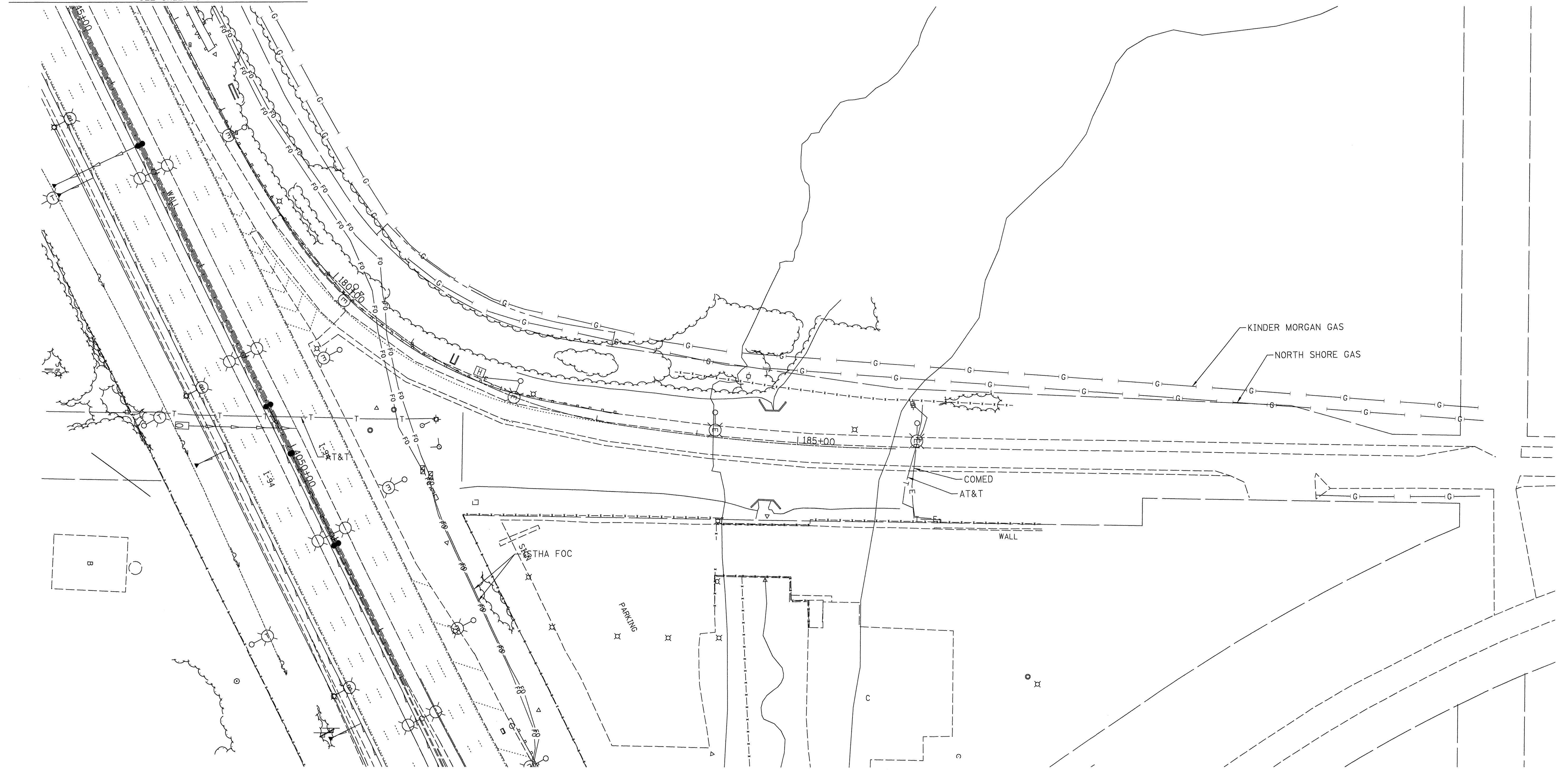


SEE SHEET 6



SEE SHEET 6

—	UNKNOWN
— CTV —	CABLE TV
— T —	TELEPHONE
— G —	GAS
— E —	ELECTRIC
— W —	WATER
— FO —	FIBER OPTIC
— S —	SEWER
⊕	TBE TEST HOLE

UTILITY OWNERS	
AT&T	= TELEPHONE
ISTHA (PAETEC) FOC	= FIBER OPTIC
ISTHA	= FOC
NORTH SHORE	= GAS
KINDER MORGAN	= GAS
COMED	= ELECTRIC

Utilities shown on these plans as depicted in the legend have been investigated by Cardno TBE in accordance with SUE Industry Standards. All other information shown has been provided to Cardno TBE by others. Cardno TBE's SUE field investigation was performed 11/01/11 through 12/01/11. Changes to utilities after 12/01/11 may have been made and therefore may result in variances from this plan. Consideration should be given to updating this plan if deemed advisable prior to final design and construction.

ALL UTILITIES SHOWN QUALITY LEVEL "B" UNLESS NOTED OTHERWISE.

signature _____

 date _____

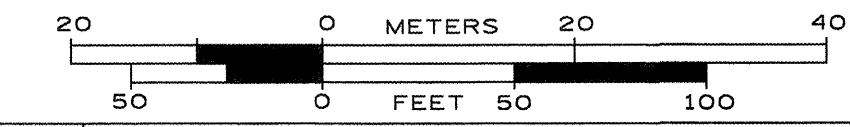
 license expires 11-30-____

CARDNO TBE

 CIVIL ENGINEERING * TRANSPORTATION * ENVIRONMENTAL

 * PLANNING * UTILITY ENGINEERING/LOCATING

TBE Job No. IL09510460, 466
SUE Plan Page: 12 of 12



Utility Quality Level "A" : visually verified Test Hole
 Utility Quality Level "B" : Designating/non Visually Verified Test Hole
 Utility Quality Level "C" : Research with Survey
 Utility Quality Level "D" : Records Research

DESIGNED	LP	REVISED	
DRAWN	KLC	REVISED	
CHECKED	KFS	REVISED	
DATE	12/05/11	REVISED	

STATE OF ILLINOIS
DEPARTMENT OF TRANSPORTATION

I-94 at IL RT. 173 to Wisconsin State Line
Wadworth, IL

F.A. RTE.	SECTION	COUNTY	TOTAL SHEETS	SHEET NO.
	49-1-R-1	Lake	677	258
FED. ROAD DIST. NO. [ILLINOIS] IDOT Project No.			Contract No. 60L77	