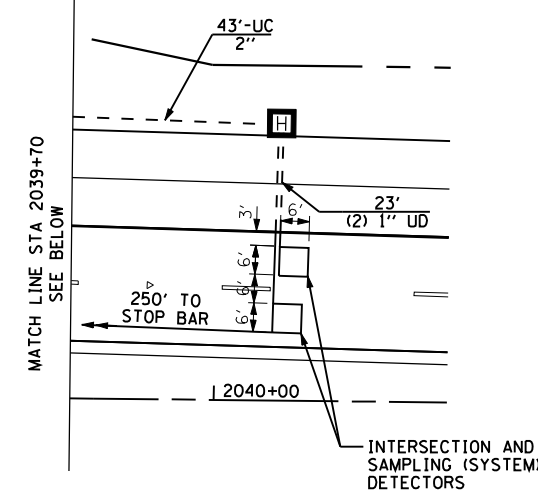
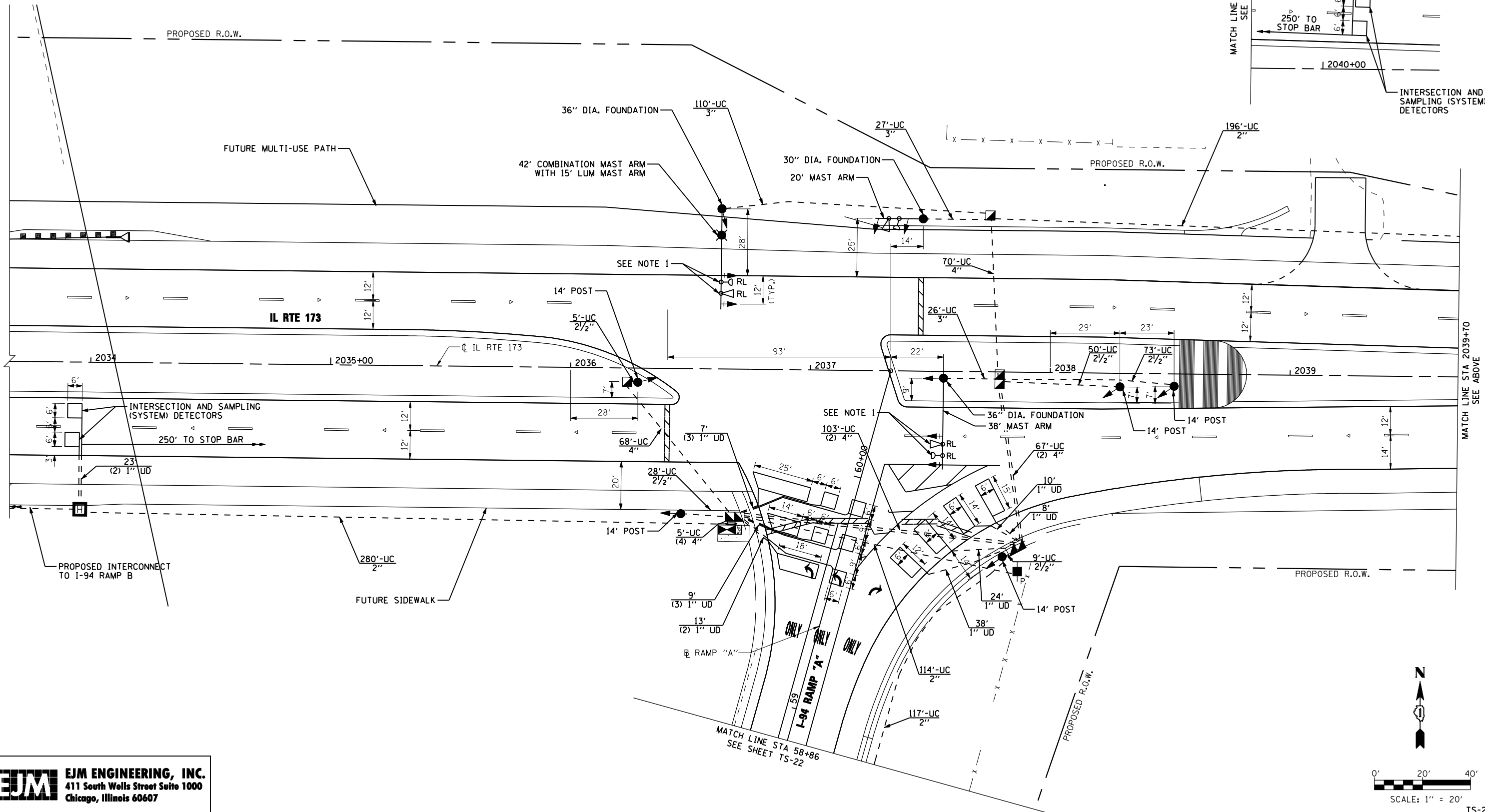


RESTORATION OF WORK AREA, RESTORATION OF THE TRAFFIC SIGNAL WORK AREA SHALL BE INCIDENTAL TO THE RELATED PAY ITEM SUCH AS FOUNDATION, CONDUIT, HANDHOLE, TRENCH AND BACKFILL, ETC., AND NO EXTRA COMPENSATION SHALL BE ALLOWED. ALL ROADWAY SURFACES SUCH AS SHOULDERS, MEDIANS, SIDEWALKS, PAVEMENT, ETC. SHALL BE REPLACED IN KIND. ALL DAMAGE TO MOWED LAWNS SHALL BE REPLACED WITH AN APPROVED SOD, AND ALL DAMAGE TO UNMOWED FIELDS SHALL BE SEEDED IN ACCORDANCE WITH STANDARD SPECIFICATIONS 252 AND 250 RESPECTIVELY.

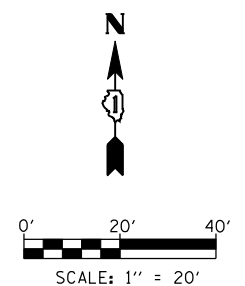
NOTES:

- EMERGENCY VEHICLE PREEMPTION EQUIPMENT SHALL BE RELOCATED FROM THE TEMPORARY SIGNAL INSTALLATION.



s:\projects\3021.us_41-usa_to_11.173 - bba\p\sect_work\disup\lines\tr-offic_signals\sheet\060177-shr-ts-21.dgn

EJM ENGINEERING, INC.
411 South Wells Street Suite 1000
Chicago, Illinois 60607



FILE NAME =	USER NAME = gra1	DESIGNED - GR	REVISED -
		DRAWN - GR	REVISED -
	PLOT SCALE = 40,0000 ' / IN.	CHECKED - BKS	REVISED -
	PLOT DATE = 6/18/2012	DATE - 06/19/2012	REVISED -

**STATE OF ILLINOIS
DEPARTMENT OF TRANSPORTATION**

**TRAFFIC SIGNAL INSTALLATION
IL RTE 173 AT I-94 RAMP "A"**

SCALE: 1" = 20' SHEET NO. 1 OF 2 SHEETS STA. 2033+67 TO STA. 2039+83

F.A.I. RTE.	SECTION	COUNTY	TOTAL SHEETS	SHEET NO.
94	49-1-R-1	LAKE	677	352
CONTRACT NO. 60L77			ILLINOIS FED. AID PROJECT	

TS-21