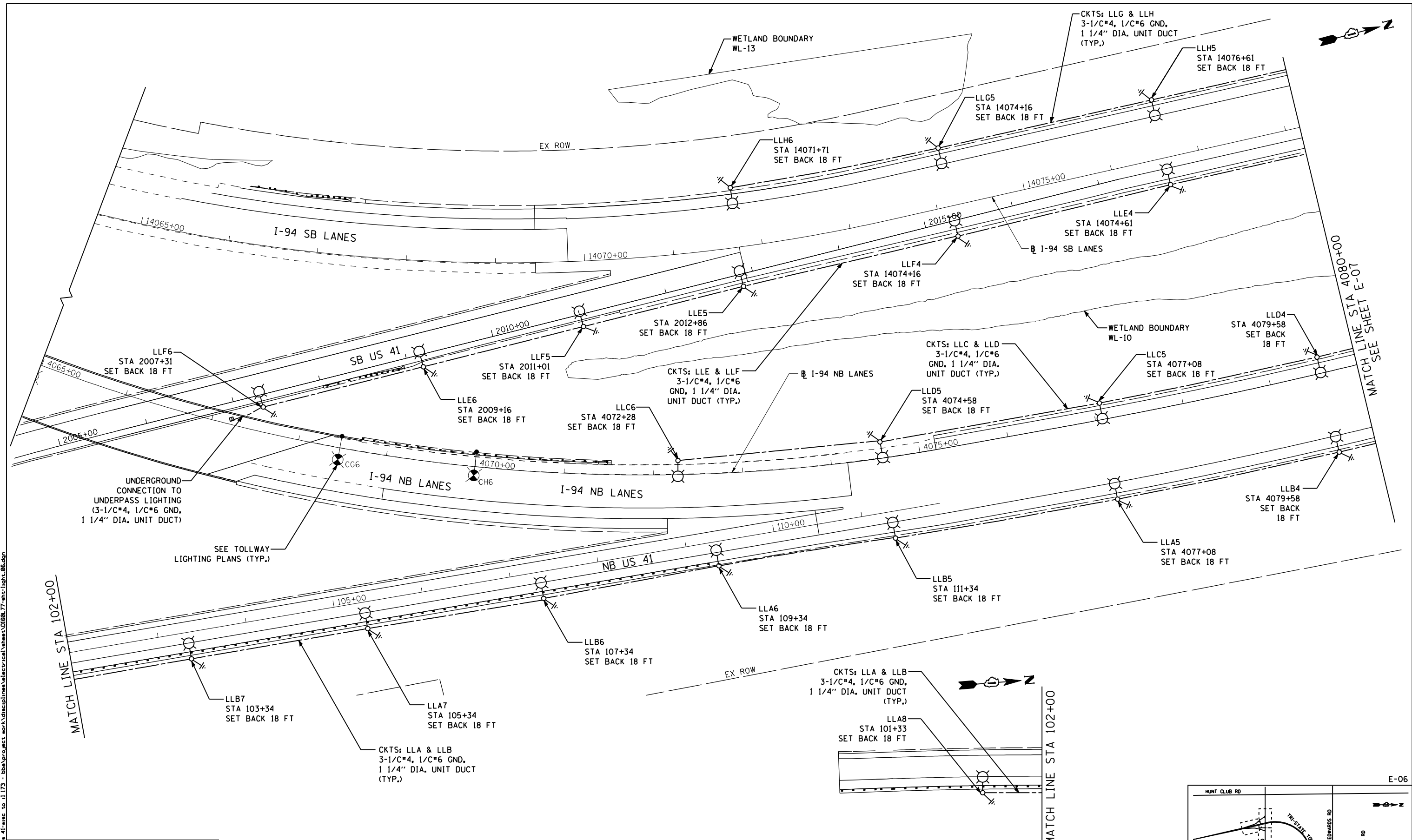


s:\projects\2012\11-41-mse-to-1173-bba\proj\set-work\disciplines\electrical\sheet\0606-77-ht-light-06.dgn



UNDERGROUND CONNECTION TO UNDERPASS LIGHTING (3-1/C\*4, 1/C\*6 GND, 1 1/4" DIA. UNIT DUCT)

SEE TOLLWAY LIGHTING PLANS (TYP.)

NOTES:  
 1. SETBACKS ARE MEASURED FROM EDGE OF TRAVELED PAVEMENT TO CENTER OF POLE.

**EJM ENGINEERING, INC.**  
 411 South Wells Street Suite 1000  
 Chicago, Illinois 60607

FILE NAME	USER NAME = rsonson	DESIGNED - RAS	REVISED -
		DRAWN - BHH	REVISED -
		CHECKED - MKR	REVISED -
		DATE - 6/19/2012	REVISED -
PLOT SCALE = 100.0000' / IN.			
PLOT DATE = 6/18/2012			

**STATE OF ILLINOIS  
 DEPARTMENT OF TRANSPORTATION**

**PROPOSED IDOT LIGHTING PLAN  
 I-94 FROM ROSECRANS RD TO STATE LINE**  
 SCALE: 1"=50' SHEET NO. 6 OF 53 SHEETS STA. 4065+00 TO STA. 4080+00

E-06

SCALE: 1" = 50'

F.A. RTE.	SECTION	COUNTY	TOTAL SHEETS	SHEET NO.
94	49-1-R-1	LAKE	677	366
CONTRACT NO. 60L77				
ILLINOIS FED. AID PROJECT				