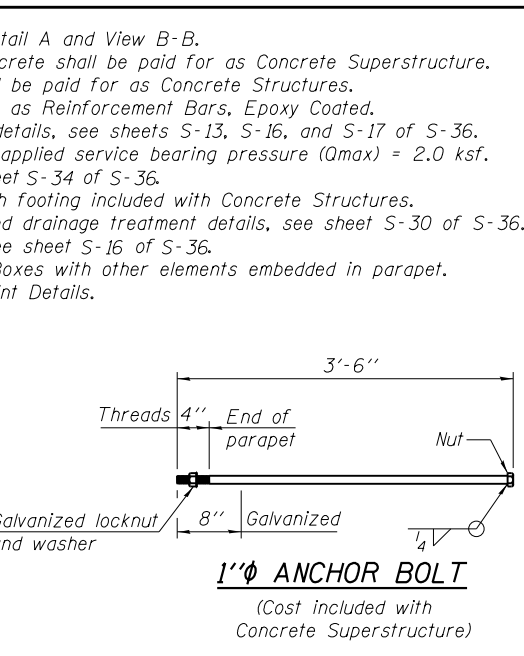
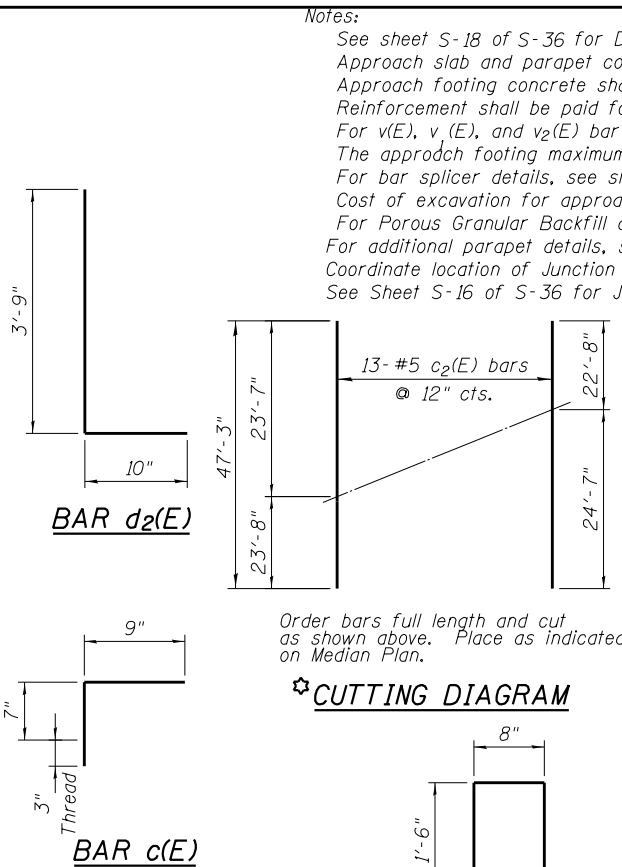
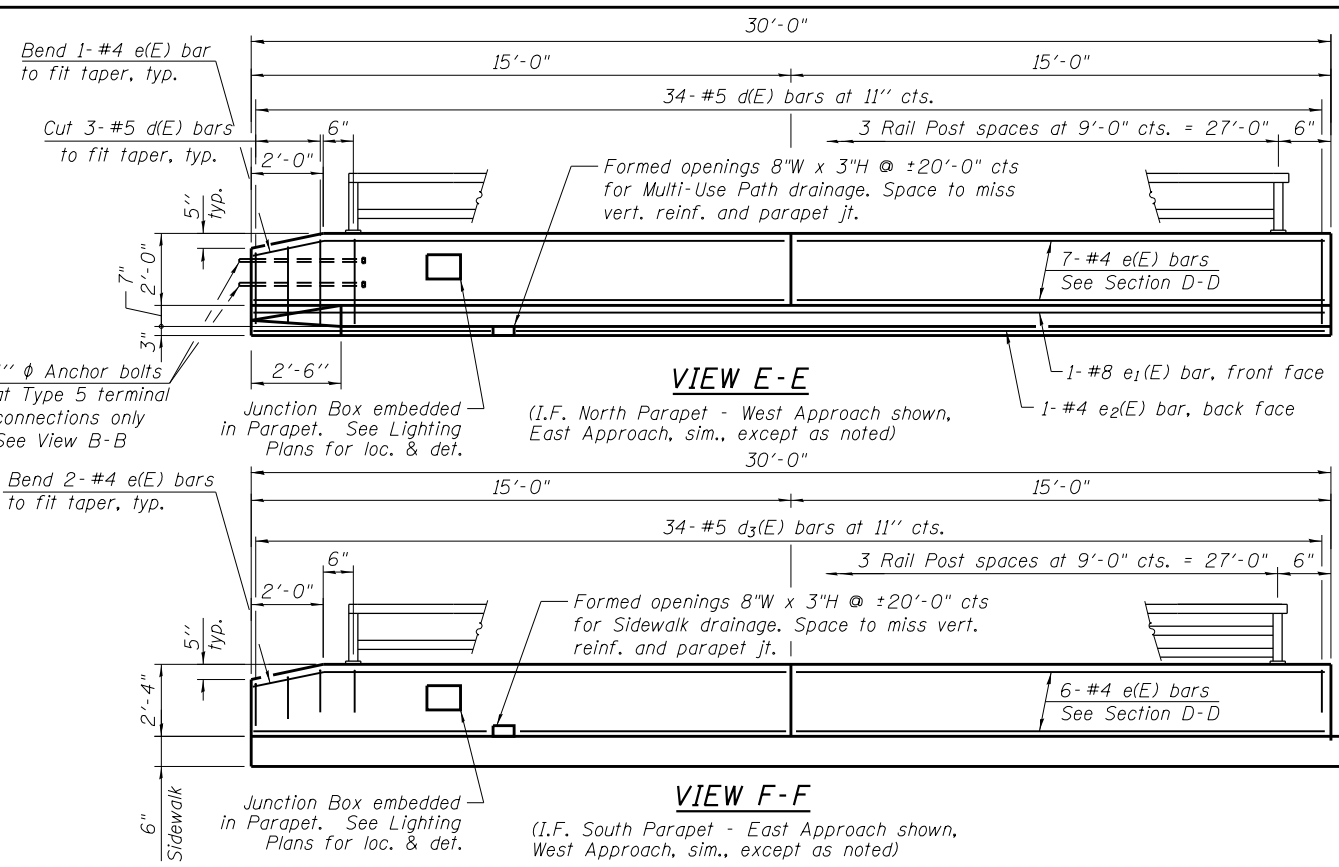


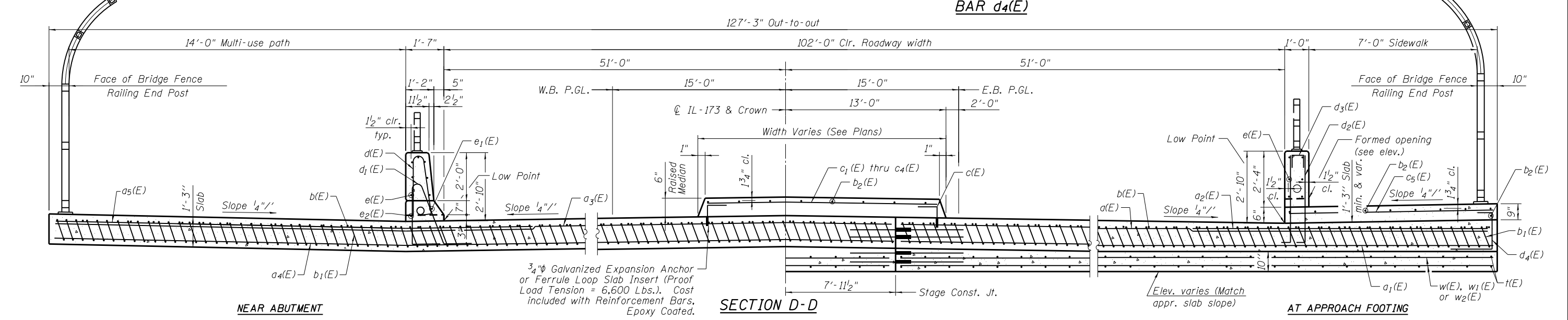
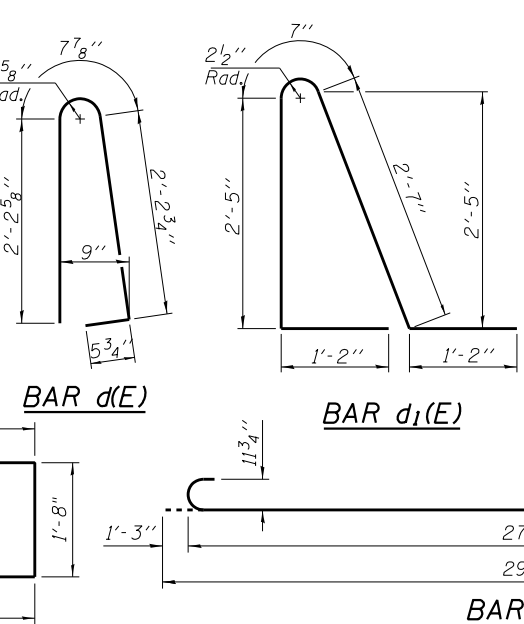
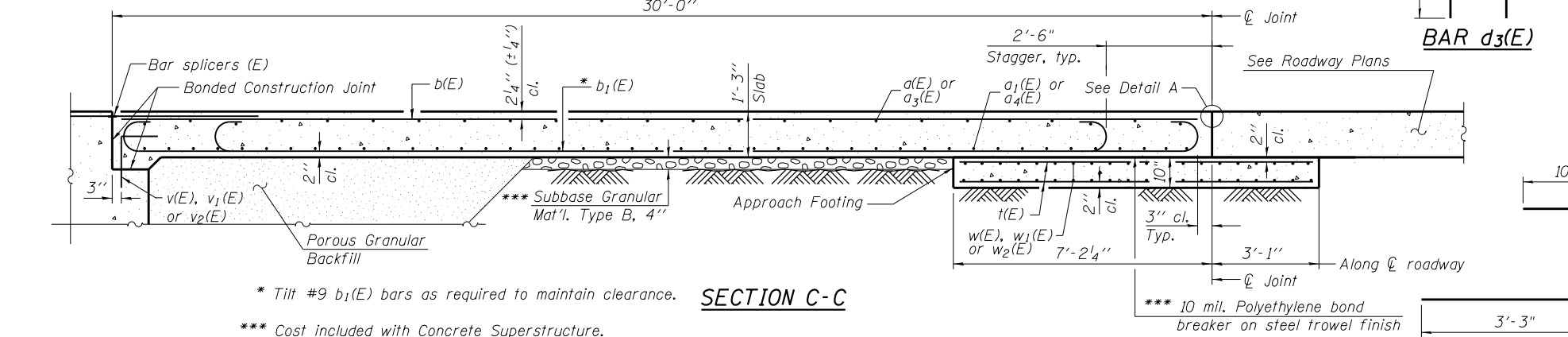
6/19/2012 11:05:52 AM

S:\10105_CADD\60177_IL_173\60177_Sheets\0490535-60177-09-ASD.dgn



TWO APPROACHES
BILL OF MATERIAL

Bar	No.	Size	Length	Shape
a(E)	100	#4	27'-9"	—
a1(E)	92	#5	52'-10"	—
a2(E)	48	#6	14'-4"	—
a3(E)	150	#4	27'-6"	—
a4(E)	184	#5	41'-2"	—
a5(E)	48	#6	22'-0"	—
b(E)	208	#4	29'-8"	—
b1(E)	612	#9	29'-9"	—
b2(E)	50	#5	29'-8"	—
c(E)	124	#5	1'-4"	┌
c1(E)	31	#5	2'-8"	—
c2(E)	13	#5	4'-3"	—
c3(E)	6	#5	24'-10"	—
c4(E)	5	#5	22'-6"	—
c5(E)	62	#5	8'-6"	—
d(E)	68	#5	5'-7"	└
d1(E)	68	#5	7'-11"	—
d2(E)	136	#5	4'-7"	—
d3(E)	68	#5	3'-8"	—
d4(E)	92	#5	5'-9"	└
e(E)	52	#4	14'-8"	—
e1(E)	2	#8	29'-8"	—
e2(E)	2	#4	29'-8"	—
f(E)	516	#4	9'-11"	—
w(E)	80	#5	52'-10"	—
w1(E)	120	#5	27'-10"	—
w2(E)	80	#5	40'-2"	—
Concrete Superstructure	Cu. Yd.		398.7	
Concrete Structures	Cu. Yd.		80.8	
Reinforcement Bars, Epoxy Coated	Pound		107,290	
Bridge Deck Grooving	Sq. Yd.		566	
Protective Coat	Sq. Yd.		926	



Notes:
See sheet S-18 of S-36 for Detail A and View B-B.
Approach slab and parapet concrete shall be paid for as Concrete Superstructure.
Approach footing concrete shall be paid for as Concrete Structures.
Reinforcement shall be paid for as Reinforcement Bars, Epoxy Coated.
For v(E), v1(E), and v2(E) bar details, see sheets S-13, S-16, and S-17 of S-36.
The approach footing maximum applied service bearing pressure (Omax) = 2.0 ksf.
For bar splicer details, see sheet S-34 of S-36.
Cost of excavation for approach footing included with Concrete Structures.
For Porous Granular Backfill and drainage treatment details, see sheet S-30 of S-36.
For additional parapet details, see sheet S-16 of S-36.
Coordinate location of Junction Boxes with other elements embedded in parapet.
See Sheet S-16 of S-36 for Joint Details.

* Tilt #9 b1(E) bars as required to maintain clearance.
*** Cost included with Concrete Superstructure.

3/4" Galvanized Expansion Anchor or Ferrule Loop Slab Insert (Proof Load Tension = 6,600 Lbs.). Cost included with Reinforcement Bars, Epoxy Coated.

BOWMAN, BARRETT & ASSOCIATES INC. CONSULTING ENGINEERS Chicago, Illinois 312.228.0100 www.bbandatinc.com	USER NAME =	DESIGNED - MRM	DATE - 6/19/2012
	PLOT SCALE =	CHECKED - TL	REVISED -
	PLOT DATE =	DRAWN - MTR	REVISED -
		CHECKED - MRM	REVISED -

STATE OF ILLINOIS
DEPARTMENT OF TRANSPORTATION

BRIDGE APPROACH SLAB DETAILS
STRUCTURE NO. 049-0535 (BRIDGE NO. 441)
SHEET NO. S-19 OF S-36 SHEETS

F.A.I. RTE.	SECTION	COUNTY	TOTAL SHEETS	SHEET NO.
94	49-1-R-1	LAKE	677	457
CONTRACT NO. 60L77				
ILLINOIS FED. AID PROJECT				