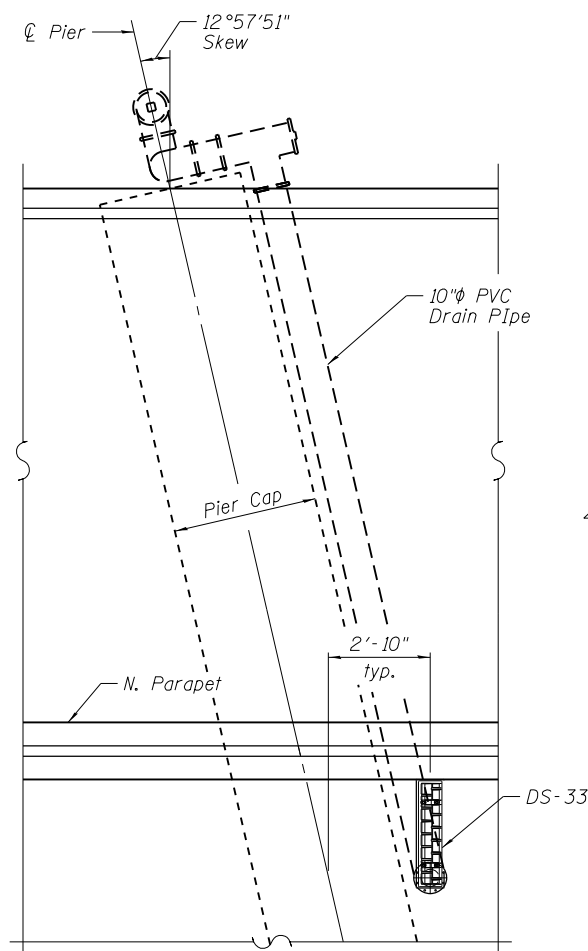
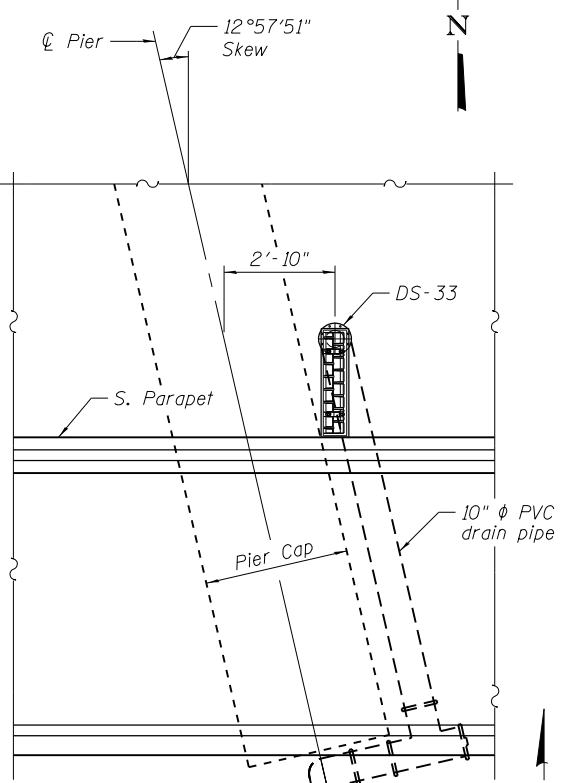


6/19/2012 11:01:54 AM

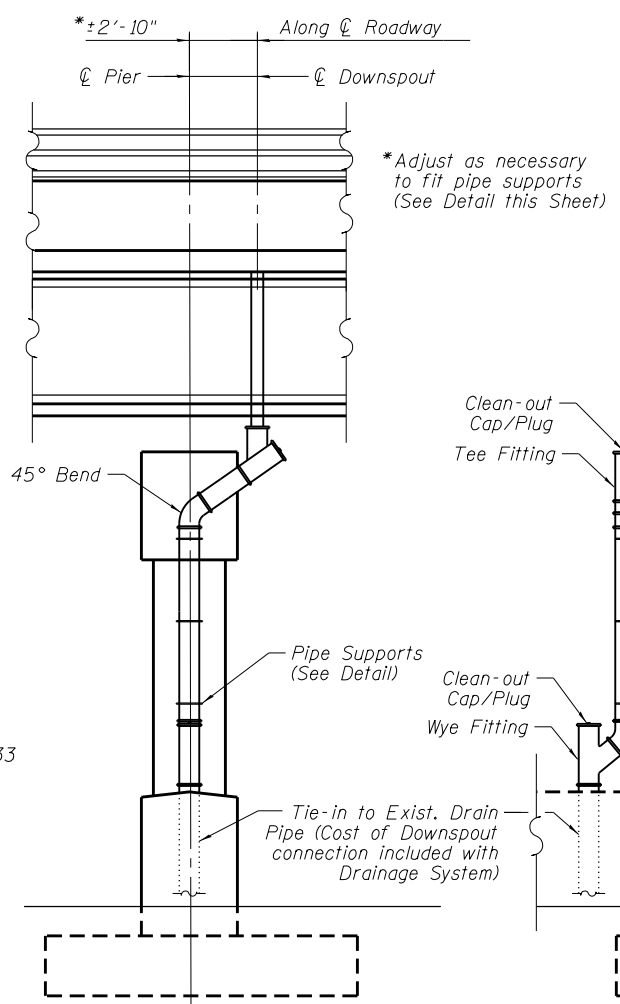
S:\10105\_CADD\60L77\_IL\_173\60L77\_Sheets\0490535-60L77-022-DS3.dgn



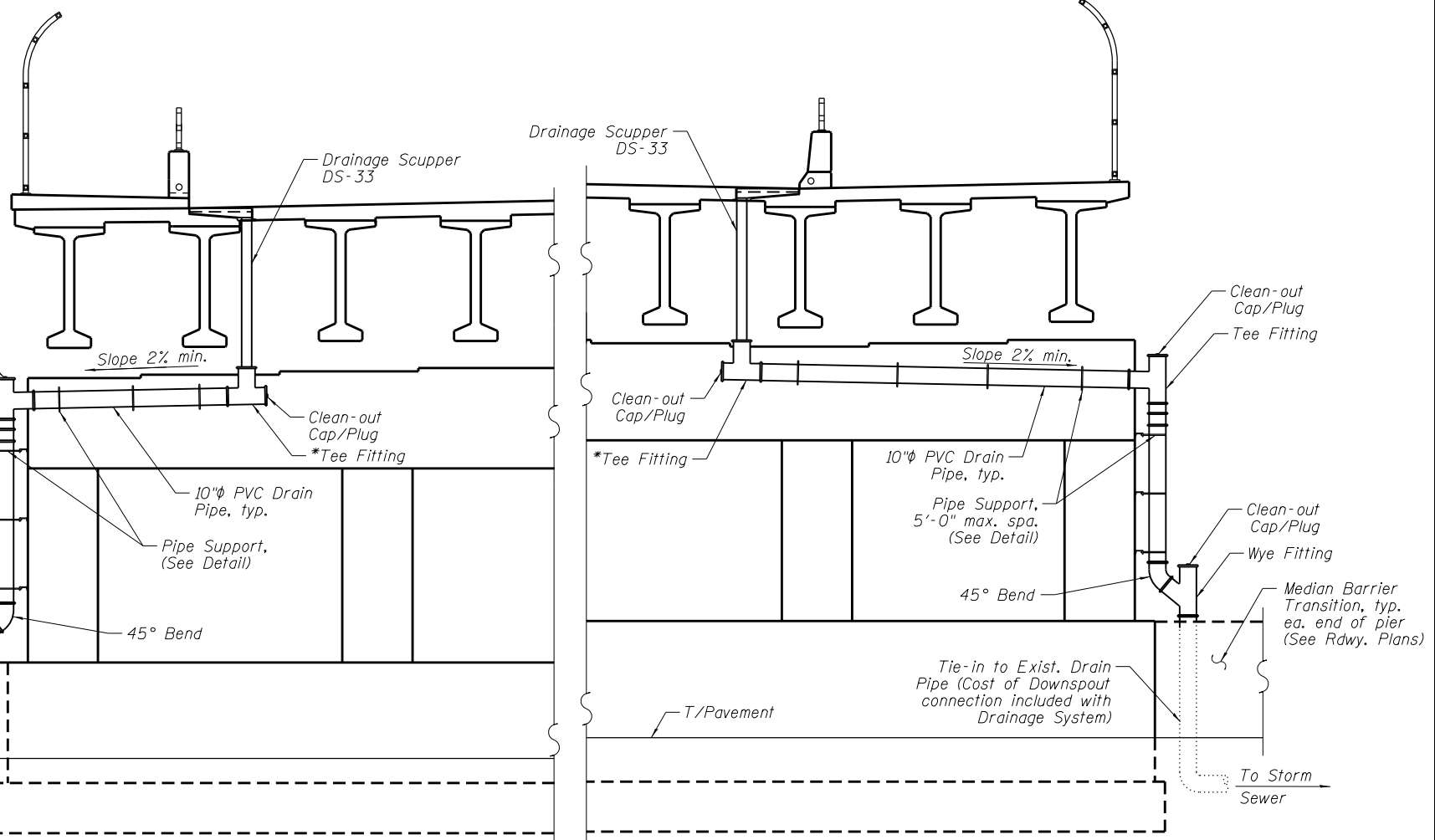
**PLAN**  
(N. Parapet Scuppers)



**PLAN**  
(S. Parapet Scuppers)

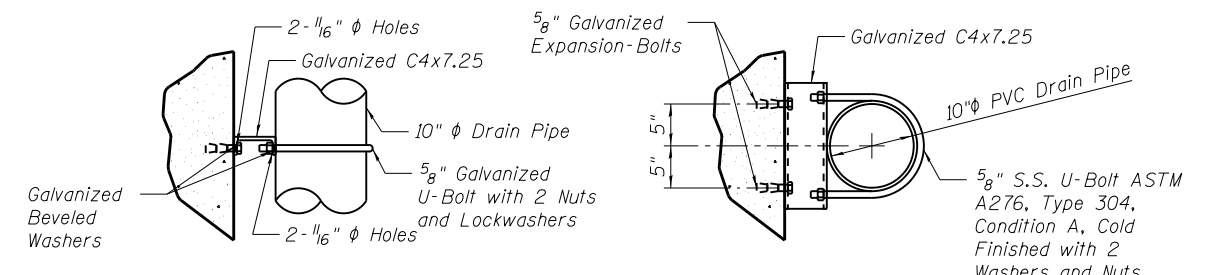


**ELEVATION**  
(Looking North, at S. End, N. End, sim)



**ELEVATION**  
(Looking West)

\* Install such that scupper downspout extends a minimum of 1" into Tee Fitting.



**PIPE SUPPORT DETAILS**

**Notes:**

1. Cost of Drain Pipe, Clean-out caps/plugs, pipe hangers, elbows, tees and other necessary connection pieces, including installation, shall be included with "Drainage System".
2. See Sheet S-21 of S-36 for Drainage Scupper details.

**BILL OF MATERIAL**

ITEM	UNIT	QUANTITY
Drainage System	L. Sum	1

BOWMAN, BARRETT & ASSOCIATES INC.  
CONSULTING ENGINEERS  
Chicago, Illinois  
312.228.0100  
www.bbandatnc.com

USER NAME =	DESIGNED - MRM	DATE - 6/19/2012
	CHECKED - TL	REVISED -
PLOT SCALE =	DRAWN - MTR	REVISED -
PLOT DATE =	CHECKED - MRM	REVISED -

**STATE OF ILLINOIS**  
**DEPARTMENT OF TRANSPORTATION**

**DRAINAGE SYSTEM**  
**STRUCTURE NO. 049-0535 (BRIDGE NO. 441)**  
SHEET NO. S-22 OF S-36 SHEETS

F.A.I. RTE.	SECTION	COUNTY	TOTAL SHEETS	SHEET NO.
94	49-1-R-1	LAKE	677	460
CONTRACT NO. 60L77				
ILLINOIS FED. AID PROJECT				