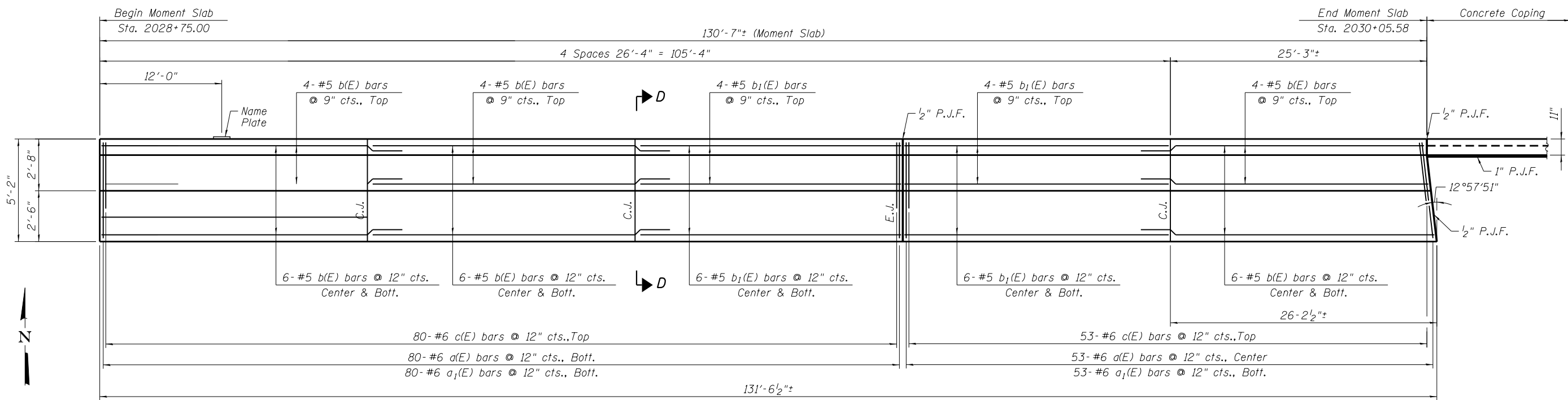


6/29/2012 9:32:32 AM

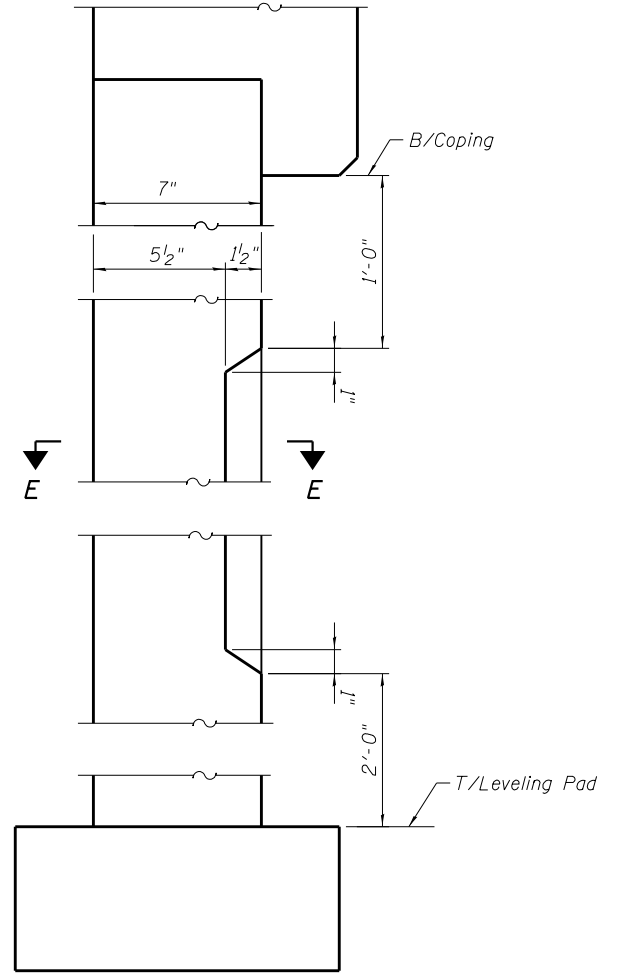
S:\101\05_CADD\60L77_IL_173\60L77_Sheets\049W045-60L77-003-DET2.dgn



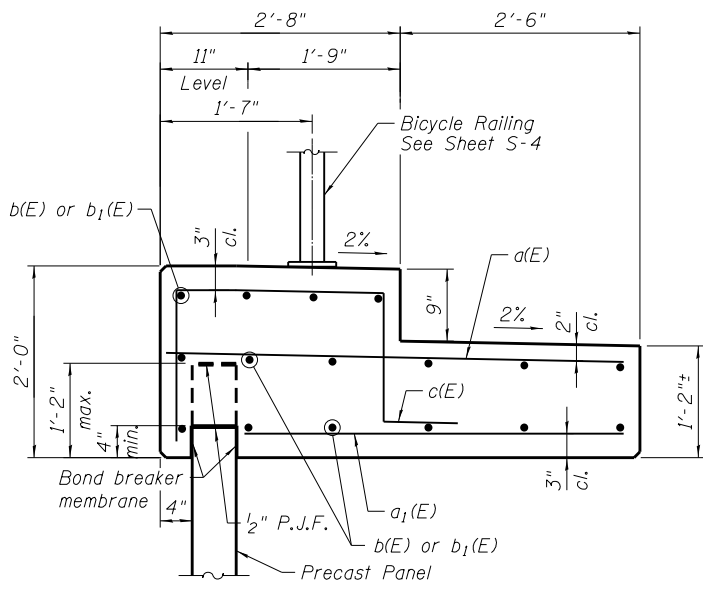
MOMENT SLAB PLAN

NOTES

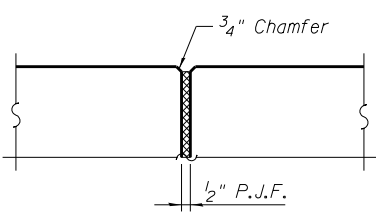
- Contractor to design MSE Wall panels with Rustication Details. Cost included with "Mechanical Stabilized Earth Retaining Wall".



RUSTICATION DETAILS



SECTION D-D



EXPANSION JOINT DETAIL

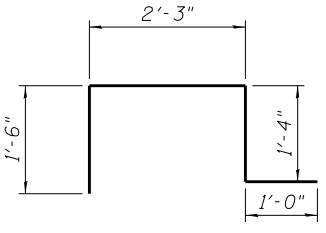
STATION 2028+75 TO 2030+66
 BUILT 201 BY
 STATE OF ILLINOIS
 F.A.I. RTE. 94 SEC. 49-1-R-1
 STR. NO. 049-W045

NAME PLATE
 See Std. 515001

MIN. BAR LAP
 #5 = 3'-3"

NOTES

- All exposed concrete edges shall have a 3/4" x 45 degree chamfer, except where shown otherwise.
- Cost of furnishing and installing P.J.F.'s and bond breaker membranes shall be included with "Concrete Superstructure".



BILL OF MATERIAL

Bar	No.	Size	Length	Shape
a(E)	133	#6	4'-10"	—
a ₁ (E)	133	#6	3'-11"	—
b(E)	48	#5	29'-7"	—
b ₁ (E)	32	#5	26'-0"	—
c(E)	133	#6	6'-1"	└
Reinforcement Bars, Epoxy Coated		Pound	5,320	
Concrete Superstructure		Cu. Yd.	41.0	
Name Plates		Each	1	

BOWMAN, BARRETT & ASSOCIATES INC.
 CONSULTING ENGINEERS
 Chicago, Illinois
 312.228.0100
 www.bbdatinc.com

USER NAME =	DESIGNED - IYL	DATE - JUNE 27, 2012
PLOT SCALE =	CHECKED - BAK	REVISED -
PLOT DATE =	DRAWN - MTR	REVISED -
	CHECKED - IYL	REVISED -

STATE OF ILLINOIS
 DEPARTMENT OF TRANSPORTATION

WALL DETAILS II
 STRUCTURE NO. 049-W045
 SHEET NO. S-3 OF S-6 SHEETS

F.A.I. RTE.	SECTION	COUNTY	TOTAL SHEETS	SHEET NO.
94	49-1-R-1	LAKE	677	477
CONTRACT NO. 60L77				
ILLINOIS FED. AID PROJECT				