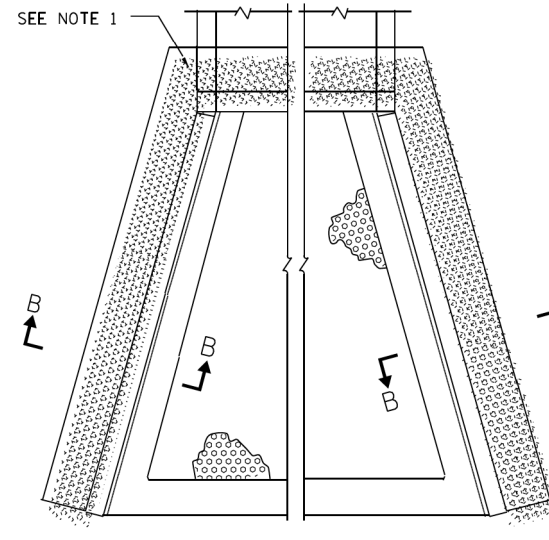
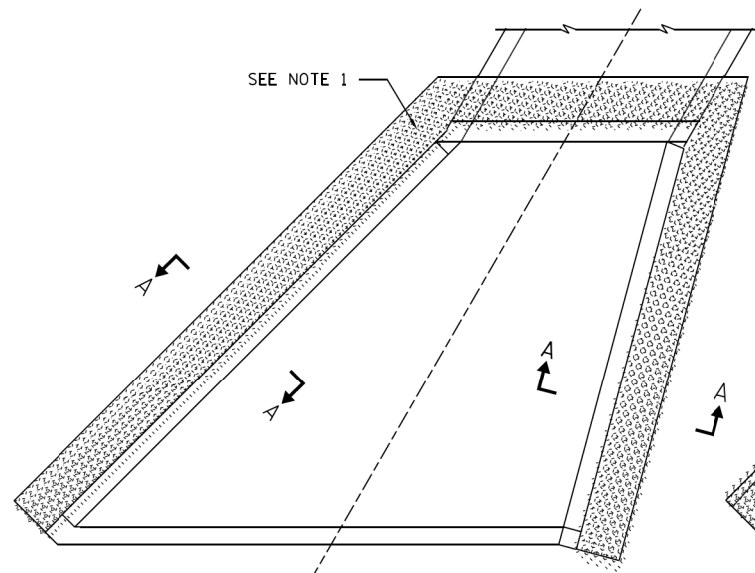


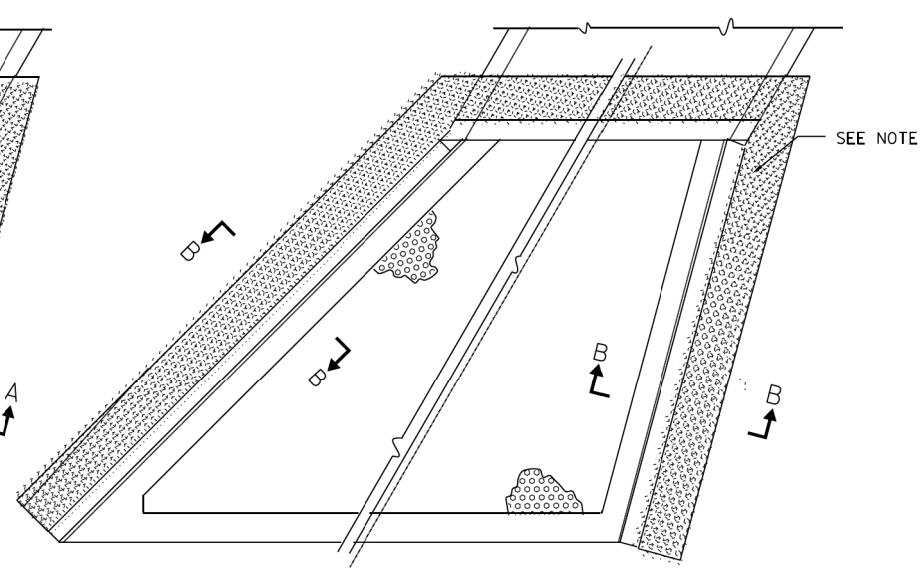
PLAN-0° SKEW, H ≤ 4'



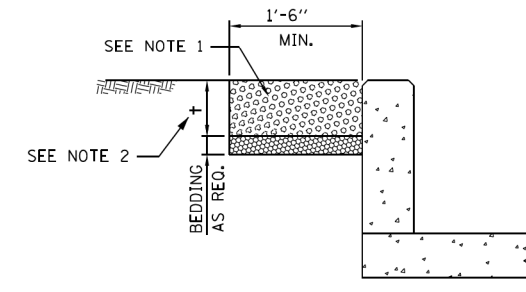
PLAN-0° SKEW, H ≤ 8'



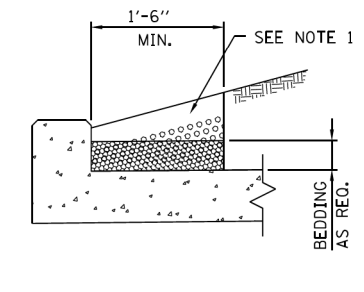
PLAN-SKEW, H ≤ 4'



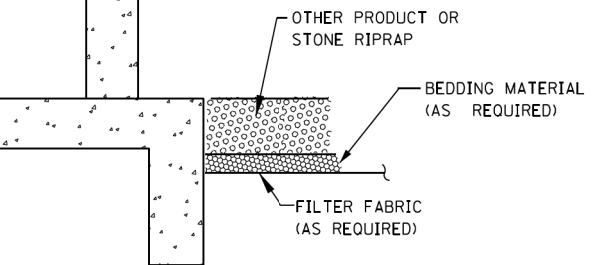
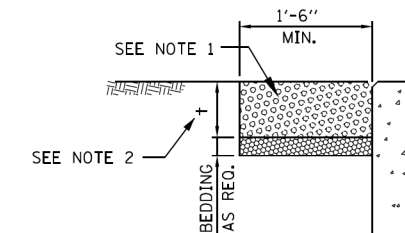
PLAN-SKEW, H ≤ 8'



SECTION A-A



SECTION AT HEADWALL



SECTION B-B

NOTES:

1. THE PREFERRED METHOD FOR ACHIEVING EROSION PROTECTION AT END SECTIONS SHOULD BE THROUGH THE USE OF PRODUCTS THAT PROMOTE REVEGETATION WITHIN THE AREA OF CONCERN.
2. THICKNESS "t" WILL BE DETERMINED BY THE MANUFACTURE'S RECOMMENDATION FOR THE PRODUCT USED. STONE RIPRAP SHALL BE IN ACCORDANCE WITH THE STANDARD SPECIFICATIONS.
3. EROSION PROTECTION PLACEMENT SHALL BE INSTALLED FLUSH WITH ADJACENT GRADE.
4. FOR USE WITH STANDARDS B10 TO B18.

Paul Kovacs
APPROVED..... DATE 3-1-2010...
CHIEF ENGINEER

DATE	REVISIONS
3-1-2010	REVISED EROSION PROTECTION AND NOTES

Illinois Tollway
Open Roads for a Faster Future

EROSION PROTECTION

STANDARD B19-01

BOWMAN, BARRETT & ASSOCIATES INC.
CONSULTING ENGINEERS
Chicago, Illinois
312.228.0100
www.bbandainc.com



FILE NAME = #FILES#

USER NAME = default

DESIGNED -

REVISED -

DRAWN -

REVISED -

PLOT SCALE = H=1"=10' V=1"=5'

CHECKED - RGR

REVISED -

PLOT DATE = 6/18/2012

DATE - 6/19/2012

REVISED -

STATE OF ILLINOIS
DEPARTMENT OF TRANSPORTATION

TOLLWAY STANDARD DRAWING

SCALE:

SHEET NO. N/A OF N/A SHEETS

STA.

TO STA.

F.A. RTE.

94

SECTION

49-1-R-1

COUNTY

LAKE

TOTAL SHEETS

677

SHEET NO.

628

CONTRACT NO. 60L77

ILLINOIS FED. AID PROJECT

S:\1101\95-CADD\60L77 IL 173\60L77 Sheets\160L77-INT-1511A.dgn