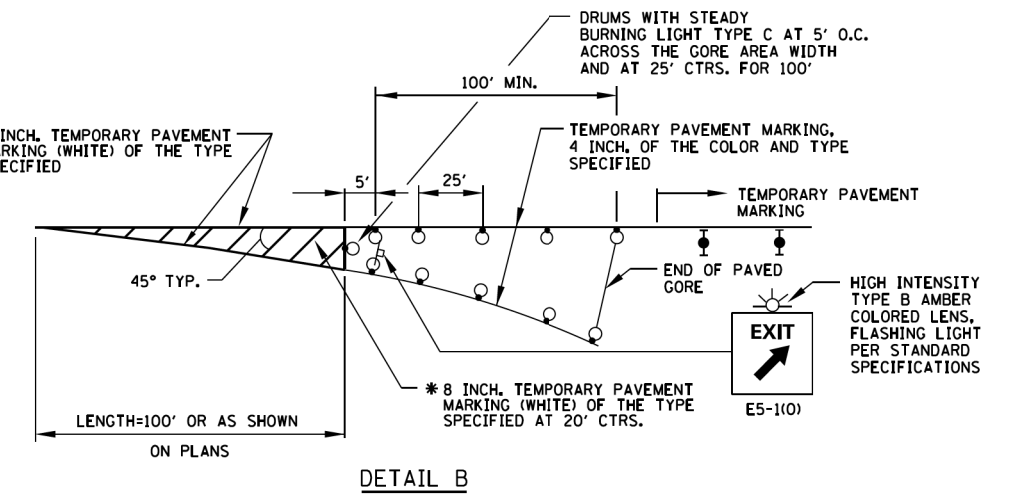
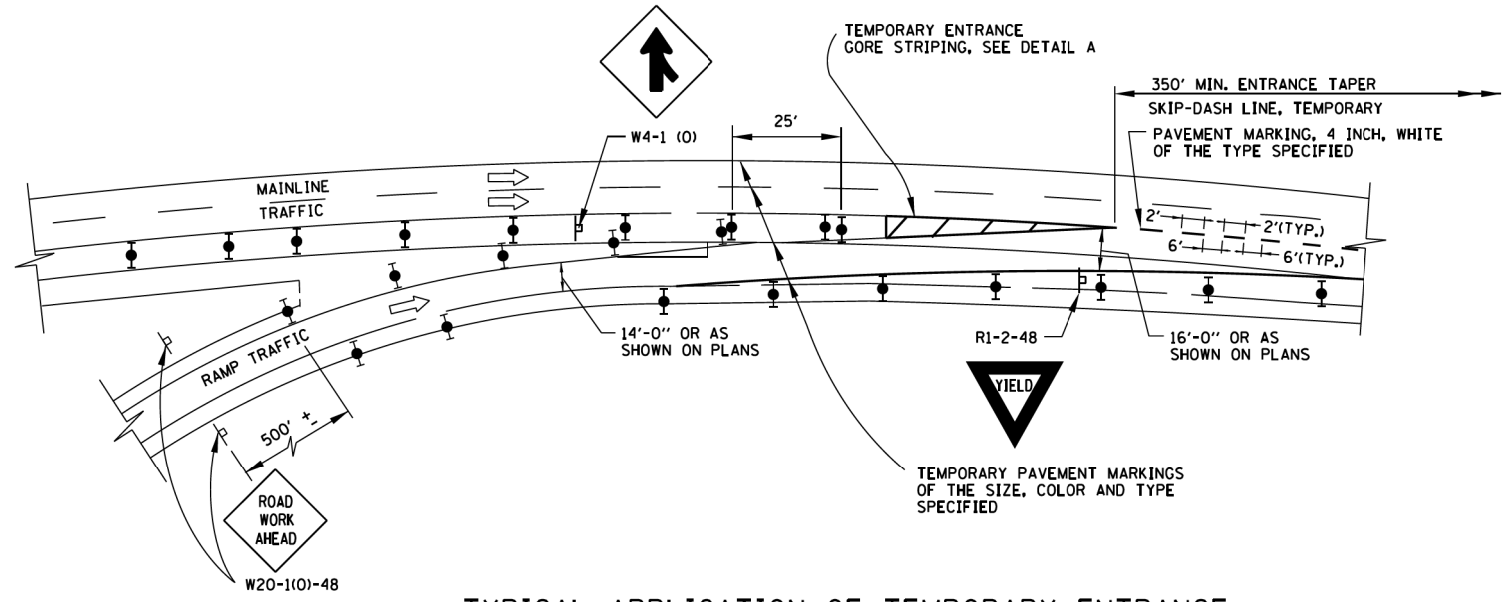


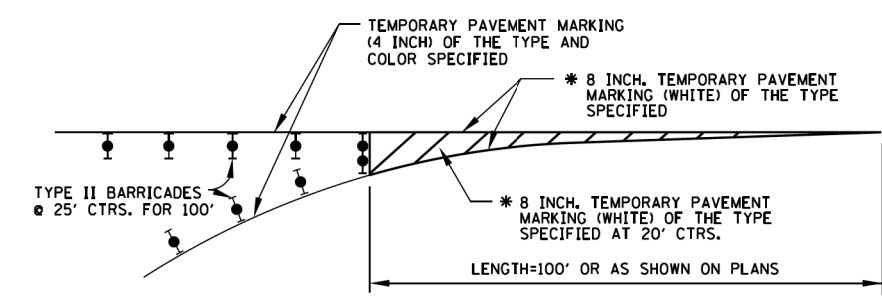
TYPICAL APPLICATION OF TEMPORARY EXIT GORE DELINEATION AND SIGNING



TEMPORARY EXIT GORE DELINEATION AND SIGNING



TYPICAL APPLICATION OF TEMPORARY ENTRANCE GORE DELINEATION AND SIGNING



TEMPORARY ENTRANCE GORE STRIPING

SYMBOLS

- WORK AREA
- SIGN
- TYPE II BARRICADE, DRUM, OR VERTICAL BARRICADE WITH STEADY BURN MONODIRECTIONAL LIGHT
- DRUM WITH STEADY BURNING LIGHT



DATE	REVISIONS
1-1-2011	CHANGED SYMBOL DESIGNATION
2-7-2012	REVISED MERGE SIGN

TEMPORARY GORE DETAILS

STANDARD E5-02

* 8 INCH TEMPORARY PAVEMENT MARKING IS TO BE MADE OF 2-TEMPORARY PAVEMENT MARKING 4 INCH, WHITE OF THE TYPE SPECIFIED.

Paul Kovacs
APPROVED..... CHIEF ENGINEER..... DATE 5-1-2009...

BOWMAN, BARRETT & ASSOCIATES INC.
CONSULTING ENGINEERS
Chicago, Illinois
312.228.0100
www.bbandainc.com

FILE NAME = \$FILES\$	USER NAME = default	DESIGNED -	REVISED -
		DRAWN -	REVISED -
		CHECKED - RGR	REVISED -
		DATE - 6/19/2012	REVISED -

STATE OF ILLINOIS
DEPARTMENT OF TRANSPORTATION

TOLLWAY STANDARD DRAWING

SCALE: SHEET NO. N/A OF N/A SHEETS STA. TO STA.

F.A. RTE.	SECTION	COUNTY	TOTAL SHEETS	SHEET NO.
94	49-1-R-1	LAKE	677	661
CONTRACT NO. 60L77				
ILLINOIS FED. AID PROJECT				

S:\1101\95\CADD\60L77_IL_175\60L77_Sheets\0160L77-INT-151TH.dgn