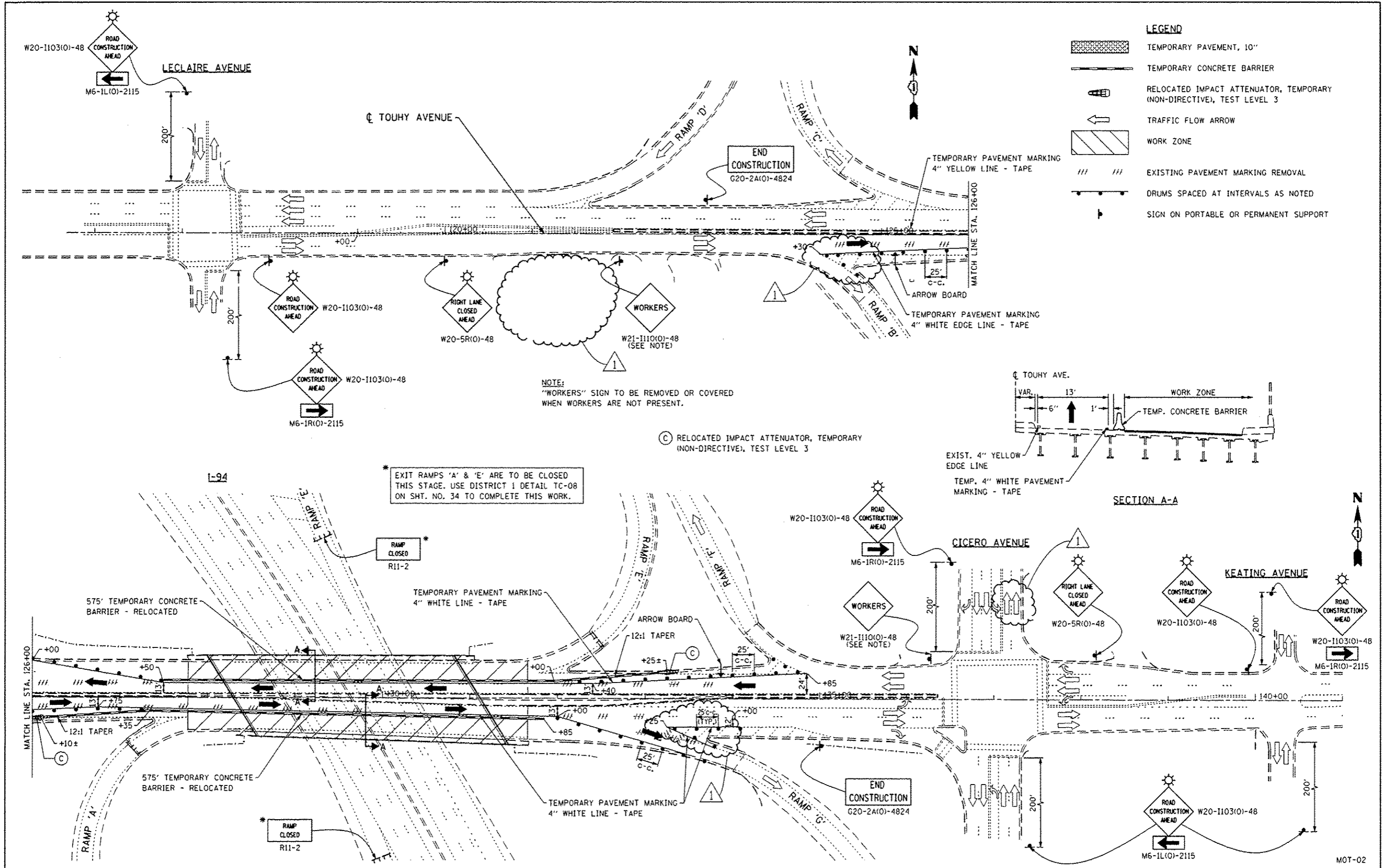


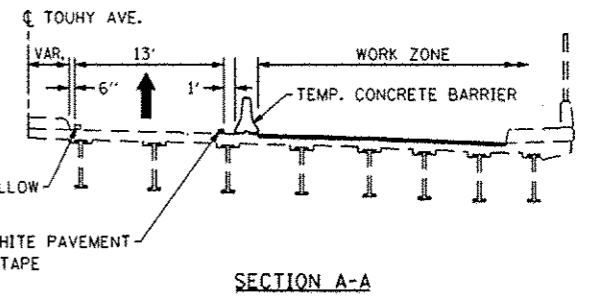
DATE	
BY	
DESIGNED	
DRAWN	
CHECKED	
DATE	
NO.	

DATE	
BY	
DESIGNED	
DRAWN	
CHECKED	
DATE	
NO.	



**LEGEND**

	TEMPORARY PAVEMENT, 10"
	TEMPORARY CONCRETE BARRIER
	RELOCATED IMPACT ATTENUATOR, TEMPORARY (NON-DIRECTIVE), TEST LEVEL 3
	TRAFFIC FLOW ARROW
	WORK ZONE
	EXISTING PAVEMENT MARKING REMOVAL
	DRUMS SPACED AT INTERVALS AS NOTED
	SIGN ON PORTABLE OR PERMANENT SUPPORT



NOTE:  
"WORKERS" SIGN TO BE REMOVED OR COVERED  
WHEN WORKERS ARE NOT PRESENT.

\* EXIT RAMP 'A' & 'E' ARE TO BE CLOSED  
THIS STAGE. USE DISTRICT 1 DETAIL TC-08  
ON SHT. NO. 34 TO COMPLETE THIS WORK.

FILE NAME: *D160P72-shr-stage2.01.dgn	DESIGNED - E.J.M.	REVISED - 07/12/2012 BK	<b>STATE OF ILLINOIS DEPARTMENT OF TRANSPORTATION</b>	<b>TRAFFIC CONTROL AND PROTECTION TOUHY AVENUE OVER I-94 STAGE II</b>		F.A.I. RTE. 94	SECTION 0304.1 HB-I-2	COUNTY COOK	TOTAL SHEETS 44	SHEET NO. 10	
PLT DATE: 7/12/2012	DRAWN - B.K.	REVISED -		SCALE:	SHEET NO. OF SHEETS	STA. TO STA.	CONTRACT NO. 60P72				
PLT SCALE: 1/8" = 1'-0"	CHECKED - G.F.L.	REVISED -					FED. ROAD DIST. NO. 1 ILLINOIS FED. AID PROJECT				
	DATE - MAY 2012	REVISED -									

**CHRISTIAN-ROGE & ASSOCIATES, INC.**  
ENGINEERS-PLANNERS-SURVEYORS  
211 WEST WACKER DRIVE  
CHICAGO, ILLINOIS 60606  
PHONE: (312) 372-9023 FAX: (312) 372-8274