

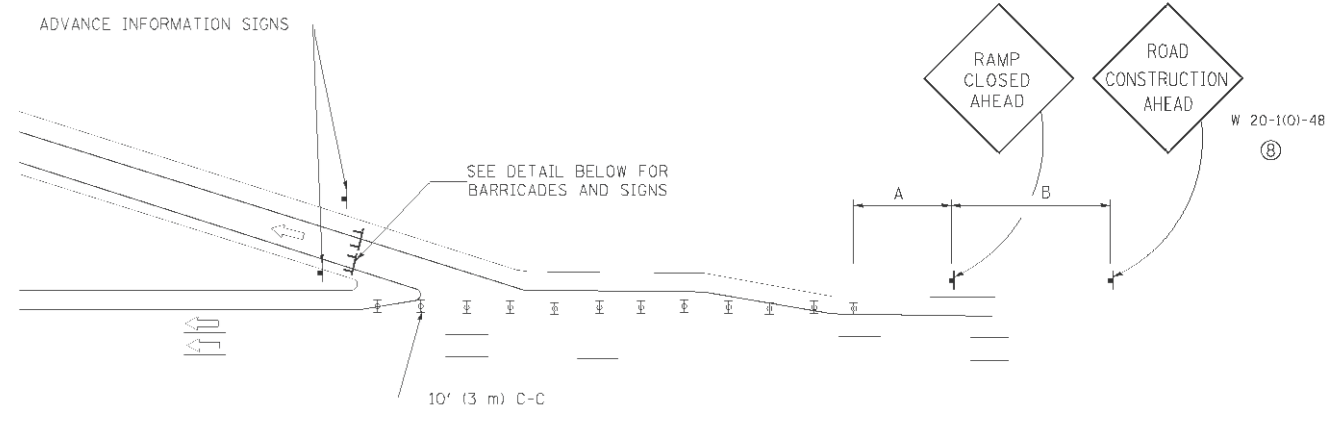
ENTRANCE RAMP CLOSURE

SIGN SPACING TABLE

| FACILITY | DISTANCE BETWEEN SIGNS | |
|----------------------|------------------------|---------------|
| | A | B |
| EXPRESSWAY >24 HOURS | 1000' (300 m) | 1500' (450 m) |
| EXPRESSWAY <24 HOURS | 500' (150 m) | 500' (150 m) |
| ARTERIAL ≥45 MPH | 350' (100 m) | 350' (100 m) |
| ARTERIAL <45 MPH | 150' (45 m) | 150' (45 m) |

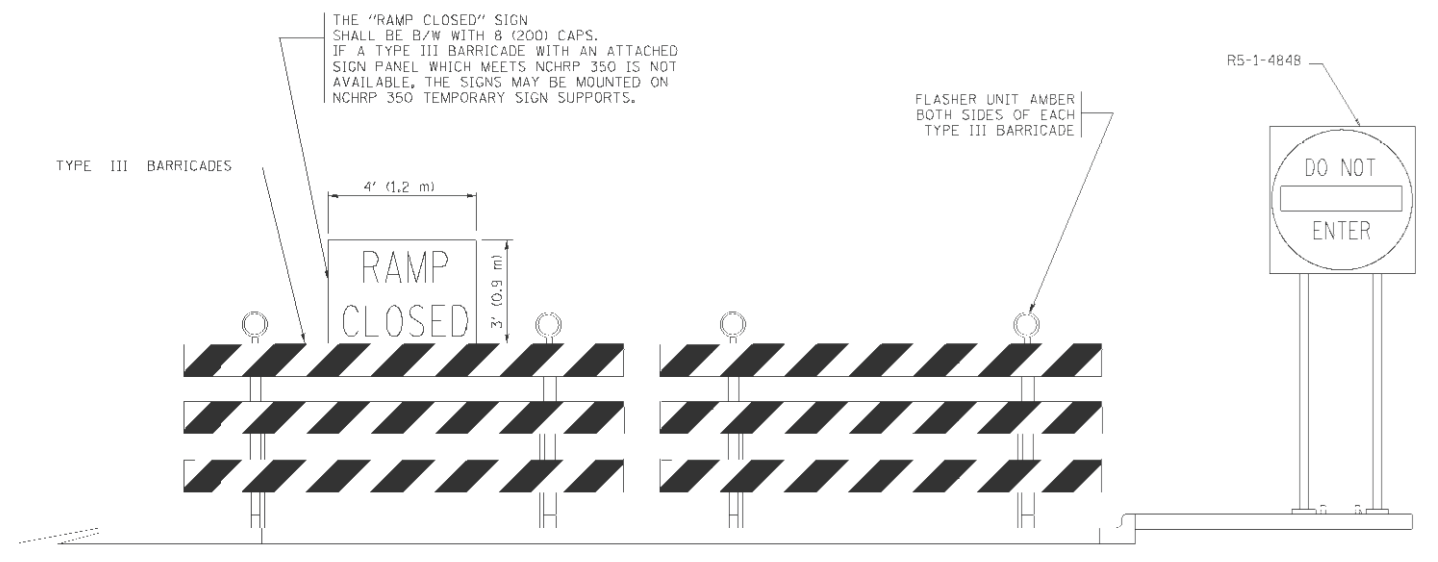
DISTANCES MAY BE SHORTENED DEPENDING UPON THE PROXIMITY OF ADJACENT RAMPS OR INTERSECTIONS.

W 20-100-48 (8) (9)

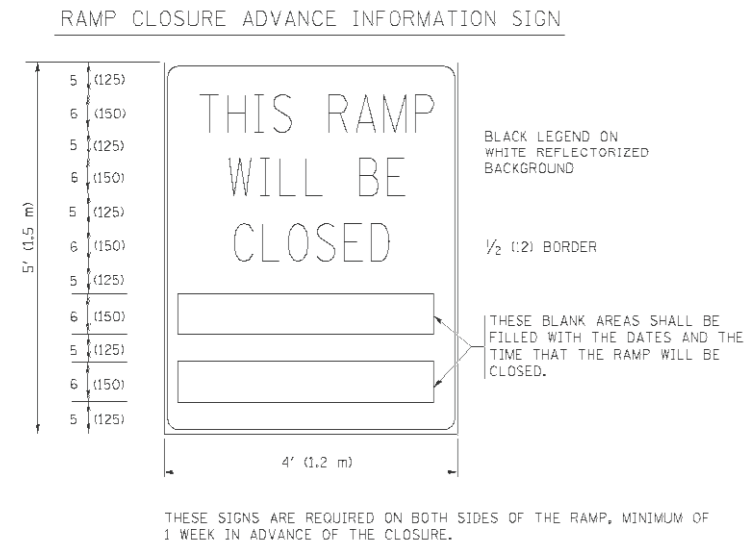
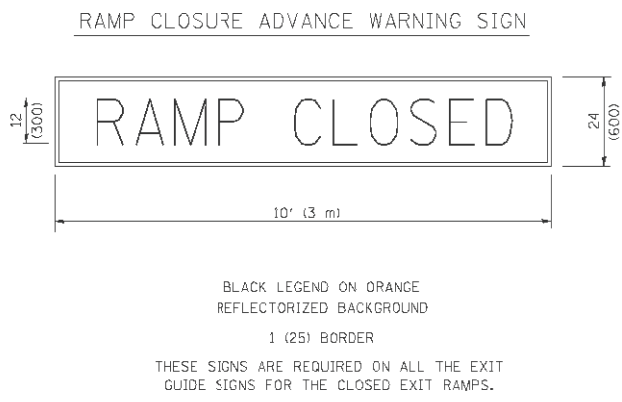


EXIT RAMP CLOSURE

- SYMBOLS**
- TYPE II BARRICADE, DRUM OR VERTICAL BARRICADE WITH STEADY BURN MONO-DIRECTIONAL LIGHT
 - TYPE III BARRICADE WITH FLASHING LIGHT



DETAIL FOR REQUIRED BARRICADES & SIGNS



GENERAL NOTES:

- CONES MAY BE SUBSTITUTED FOR DRUMS OR TYPE II BARRICADES DURING DAY OPERATIONS. CONES SHALL BE A MINIMUM OF 28 (700) HIGH.
- STEADY BURN LIGHTS WILL NOT BE REQUIRED FOR DAY OPERATIONS.
- A FLAGGER SHALL BE POSITIONED AT EACH CLOSED RAMP THAT IS OPEN TO CONSTRUCTION VEHICLES.
- ALL ROUTE MARKERS AND TRAILBLAZER ASSEMBLIES WHICH DIRECT MOTORISTS TO A CLOSED ENTRANCE RAMP SHALL BE COVERED.
- THE SIGNING AND BARRICADING WHICH IS REQUIRED BY THIS DETAIL SHALL BE INCLUDED IN THE COST OF TRAFFIC CONTROL AND PROTECTION (EXPRESSWAYS).
- AUTHORIZATION FROM THE DISTRICT'S BUREAU OF TRAFFIC IS REQUIRED FOR ALL RAMP CLOSURES.
- THE RAMP CLOSURE ADVANCE INFORMATION SIGNS SHALL BE ERECTED IF THE CLOSURE TIME EXCEEDS TWENTY-FOUR (24) HOURS. ADDITIONAL ADVANCE WARNING SIGNS ON EXIT GUIDE SIGNING WILL BE REQUIRED FOR EXIT RAMP CLOSURES THAT EXCEED TWENTY-FOUR (24) HOURS IN LENGTH.
- ROAD CONSTRUCTION AHEAD SIGNS MAY BE OMITTED WHEN THIS DETAIL IS USED IN CONJUNCTION WITH OTHER TRAFFIC CONTROL THAT ALREADY INCLUDES A ROAD CONSTRUCTION AHEAD SIGN.
- ARTERIAL ROAD CONSTRUCTION AHEAD SIGNS MAY BE OMITTED ON CLOSURES LESS THAN 24 HOURS IN DURATION.

ALL DIMENSIONS ARE IN INCHES (MILLIMETERS) UNLESS OTHERWISE SHOWN.

COMPANY NAME: HRGreen
 PROJECT CONTACT: HRGreen
 DATE PLOTTED: 5/17/2012 1:48:40 PM
 FILE NAME: 86100196.11-dst-08a.dgn
 PLOT DRIVER: pafact
 PLOT TABLE: Struct 22x34.tbl



USER NAME: lrp24
 PLOT SCALE: 50.0000 / 1
 PLOT DATE: 11/3/2010

DESIGNED - DWS
 DRAWN - DWS
 CHECKED - JAF
 DATE - 02-83

REVISED - DWS/JAF 12-02
 REVISED - JAF 02-06
 REVISED - SPB 01-07
 REVISED - SPB 12-09

STATE OF ILLINOIS
 DEPARTMENT OF TRANSPORTATION

FREEWAY ENTRANCE AND EXIT RAMP
 CLOSURE DETAILS

SCALE: NONE | SHEET NO. 1 OF 1 SHEETS | STA. TO STA.

| F.A. RTE. | SECTION | COUNTY | TOTAL SHEETS | SHEET NO. |
|-----------|------------|--------|--------------|-----------|
| 332 | 2011-073-T | COOK | 44 | 33 |
| TC-08 | | | CONTRACT NO. | 60P93 |

FED. ROAD DIST. NO. 1 ILLINOIS FED. AID PROJECT