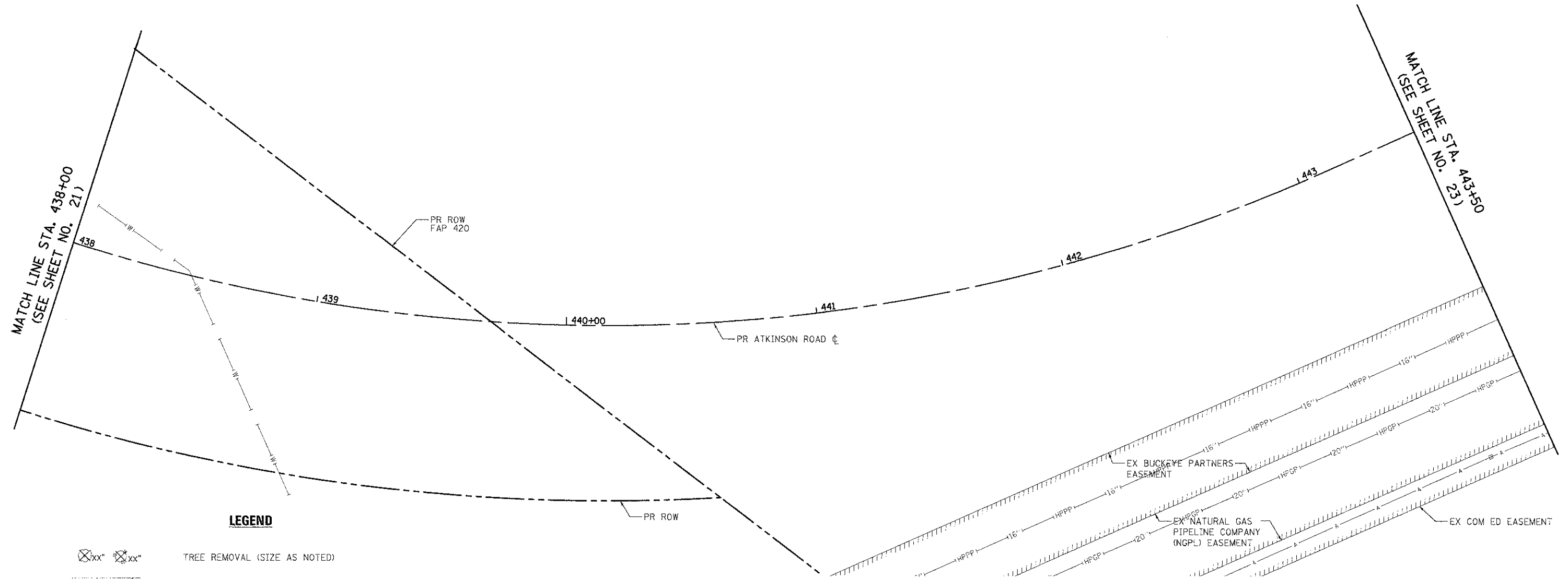


NOTES:

1. SEE ALIGNMENT, TIES, AND RIGHT-OF-WAY SHEETS FOR PROPOSED R.O.W. AND EASEMENT LOCATIONS, STATION EQUATIONS, AND CURVE INFORMATION.
2. FOR TRAFFIC SIGNAL REMOVAL AND RELOCATION PLANS, SEE TRAFFIC SIGNAL SHEETS.
3. FOR SIGN REMOVAL AND RELOCATION PLANS, SEE PAVEMENT MARKING AND SIGN SHEETS.



LEGEND

- TREE REMOVAL (SIZE AS NOTED)
- HOT-MIX ASPHALT SURFACE REMOVAL, 1 1/2"
- PAVEMENT REMOVAL OR DRIVEWAY PAVEMENT REMOVAL
- REMOVING MANHOLES, CATCH BASINS, OR INLETS
- PIPE CULVERT OR STORM SEWER REMOVAL
- RELOCATE EXISTING LIGHTING UNIT AND REMOVAL OF POLE FOUNDATION
- COMBINATION CURB AND GUTTER REMOVAL
- REMOVE SIGN PANEL ASSEMBLY OR RELOCATE SIGN PANEL ASSEMBLY
- FIRE HYDRANT AND VALVE TO BE MOVED

	USER NAME: rds	DESIGNED: JSM	REVISED: -	STATE OF ILLINOIS DEPARTMENT OF TRANSPORTATION	ATKINSON ROAD REMOVAL PLAN	F.A.U. RTE. 198	SECTION 00-00045-00-PV	COUNTY LAKE	TOTAL SHEETS NO. 195	SHEET NO. 22
	FILE NAME: ..\06_Remove\2189-ahtrn02	DRAWN: JSM	REVISED: -			SCALE: 1" = 20'	SHEET NO. 2 OF 13 SHEETS	STA. 438+00 TO STA. 443+50	FED. ROAD DIST. NO. 1 ILLINOIS FED. AID PROJECT	
PLOT SCALE: 20,000% 1/1 in.	CHECKED: DNM	REVISED: -	REVISED: -	CONTRACT NO. 63640						
PLOT DATE: 2/2/2012	DATE: 02/06/12	REVISED: -	REVISED: -							