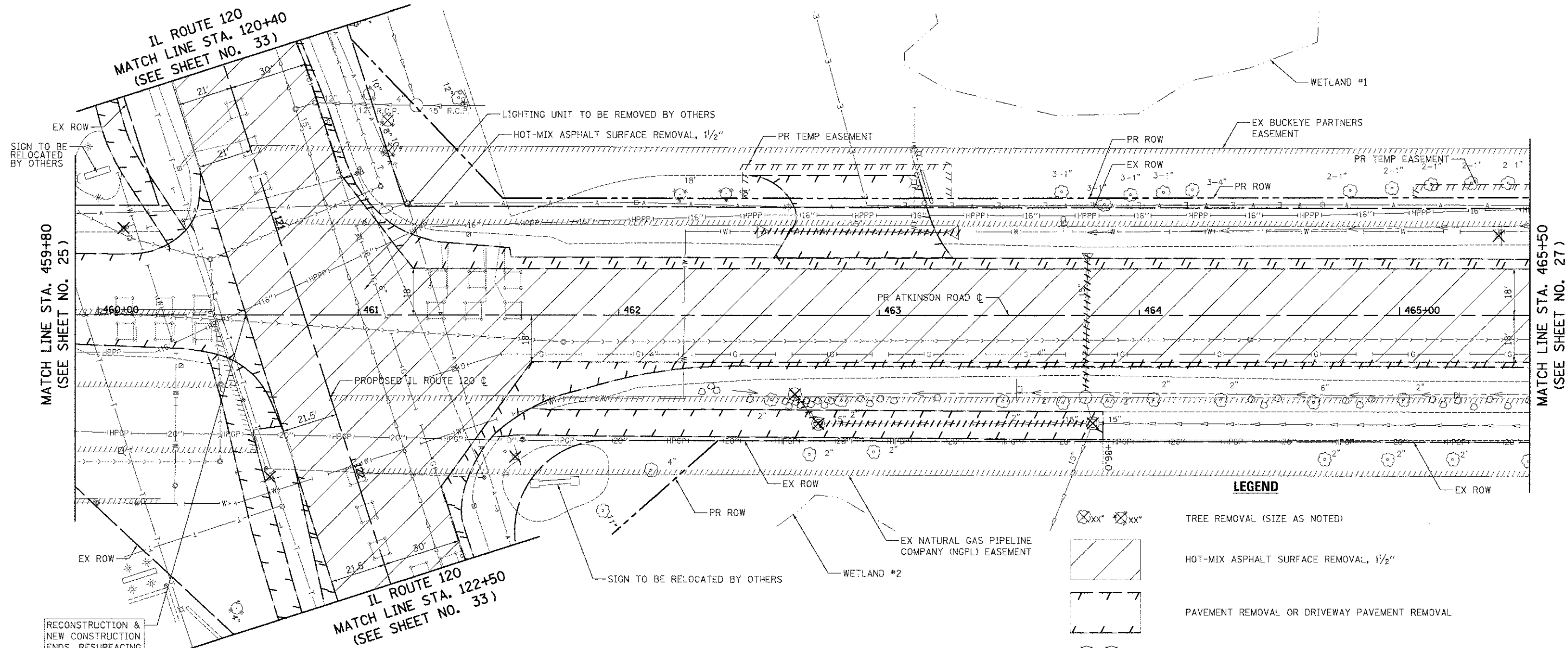


**NOTES:**

1. SEE ALIGNMENT, TIES, AND RIGHT-OF-WAY SHEETS FOR PROPOSED R.O.W. AND EASEMENT LOCATIONS, STATION EQUATIONS, AND CURVE INFORMATION.
2. FOR TRAFFIC SIGNAL REMOVAL AND RELOCATION PLANS, SEE TRAFFIC SIGNAL SHEETS.
3. FOR SIGN REMOVAL AND RELOCATION PLANS, SEE PAVEMENT MARKING AND SIGN SHEETS.
4. SEE PLAN & PROFILE SHEETS FOR ADDITIONAL RESURFACING DIMENSIONS.



RECONSTRUCTION & NEW CONSTRUCTION ENDS, RESURFACING & WIDENING BEGINS STA. 460+56.5

**LEGEND**

	TREE REMOVAL (SIZE AS NOTED)
	HOT-MIX ASPHALT SURFACE REMOVAL, 1 1/2"
	PAVEMENT REMOVAL OR DRIVEWAY PAVEMENT REMOVAL
	REMOVING MANHOLES, CATCH BASINS, OR INLETS
	PIPE CULVERT OR STORM SEWER REMOVAL
	RELOCATE EXISTING LIGHTING UNIT AND REMOVAL OF POLE FOUNDATION
	COMBINATION CURB AND GUTTER REMOVAL
	REMOVE SIGN PANEL ASSEMBLY OR RELOCATE SIGN PANEL ASSEMBLY
	FIRE HYDRANT AND VALVE TO BE MOVED

IL ROUTE 120  
MATCH LINE STA. 122+50  
(SEE SHEET NO. 33)

IL ROUTE 120  
MATCH LINE STA. 120+40  
(SEE SHEET NO. 33)

MATCH LINE STA. 459+80  
(SEE SHEET NO. 25)

MATCH LINE STA. 465+50  
(SEE SHEET NO. 27)



USER NAME: eds	DESIGNED: JSM	REVISED: -
FILE NAME: ...106-Removals\2189-shl\1006	DRAWN: JSM	REVISED: -
PLOT SCALE: 20.0000 1/1	CHECKED: DNM	REVISED: -
PLOT DATE: 2/2/2012	DATE: 02/06/12	REVISED: -

**STATE OF ILLINOIS  
DEPARTMENT OF TRANSPORTATION**

**ATKINSON ROAD  
REMOVAL PLAN**

SCALE: 1" = 20' SHEET NO. 6 OF 13 SHEETS STA. 460+00 TO STA. 465+50

F.A.U. 198	SECTION 00-00045-00-PV	COUNTY LAKE	TOTAL SHEETS 195	SHEET NO. 26
CONTRACT NO. 63640				

**ATKINSON ROAD**