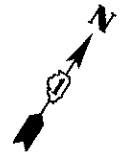


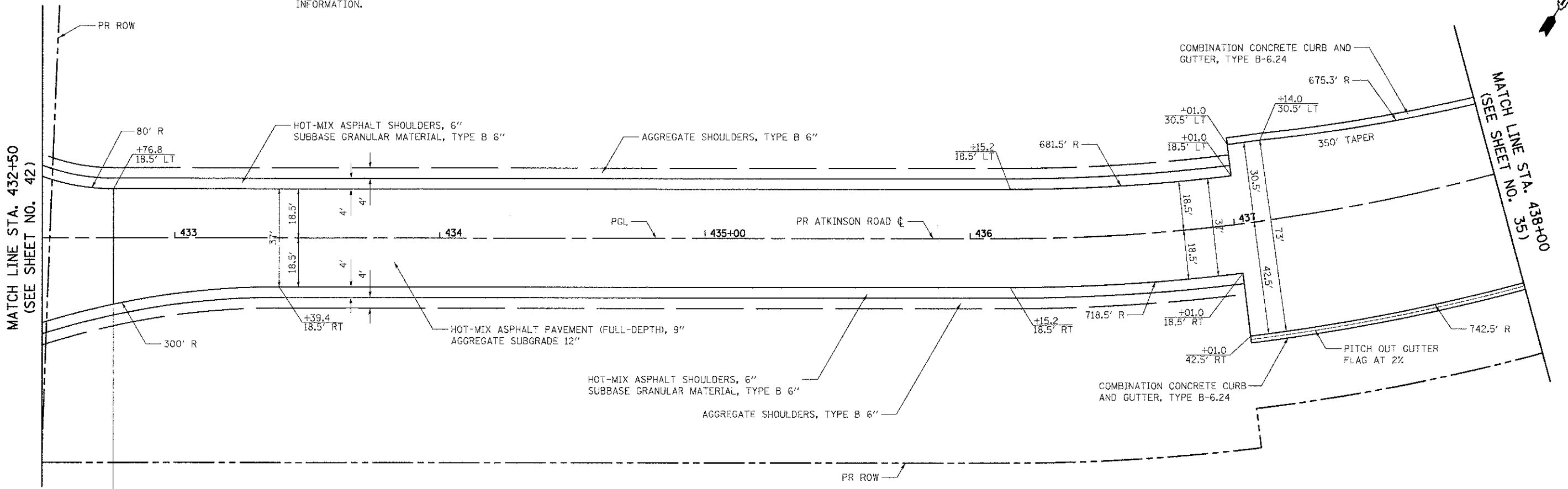
NOTES:

- SEE ALIGNMENT, TIES, AND RIGHT-OF-WAY SHEETS FOR PROPOSED R.O.W. AND EASEMENT LOCATIONS, STATION EQUATIONS, AND CURVE INFORMATION.



DATE	
BY	
CHECKED	
DESIGNED	
DRAWN	
IN CHARGE	
PROJECT	
NO.	

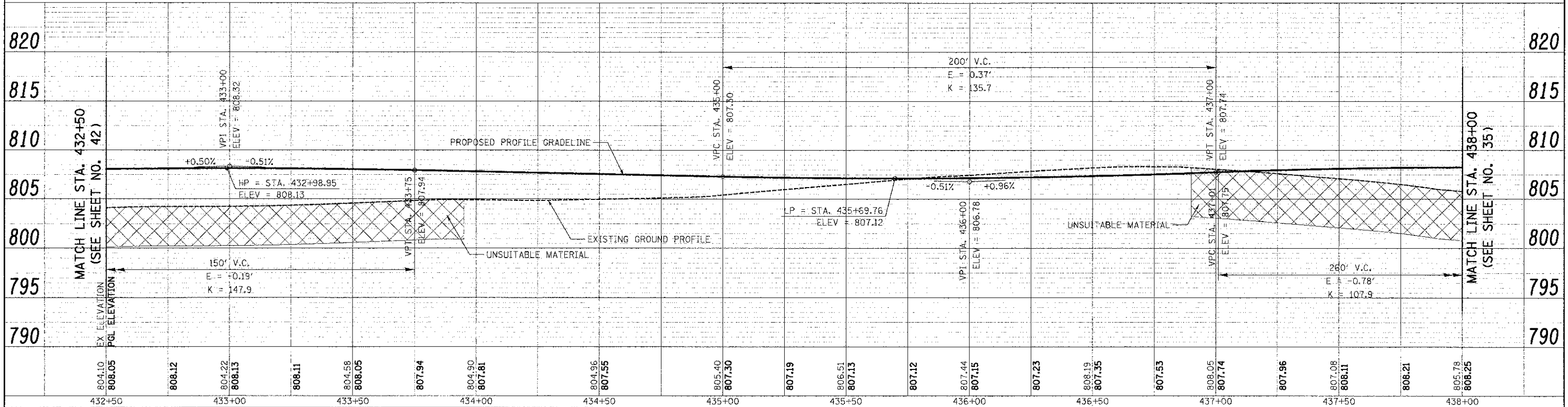
DATE	
BY	
CHECKED	
DESIGNED	
DRAWN	
IN CHARGE	
PROJECT	
NO.	



IL ROUTE 137
LIMIT OF PROPOSED WIDENING

ATKINSON ROAD
LIMIT OF HMA PAVEMENT (FULL-DEPTH), 9"

ATKINSON ROAD



USER NAME = ebs	DESIGNED - JSM	REVISED -
FILE NAME = ...2189-shr:ino-f01.dgn	DRAWN - JSM	REVISED -
PLOT SCALE = 28.0000 / 1"	CHECKED - DNM	REVISED -
PLOT DATE = 2/2/2012	DATE - 02/06/12	REVISED -

STATE OF ILLINOIS
DEPARTMENT OF TRANSPORTATION

**ATKINSON ROAD
PLAN AND PROFILE**

SCALE: 1" = 20' SHEET NO. 1 OF 13 SHEETS STA. 432+50 TO STA. 438+00

F.A.U. RTE. 198	SECTION 00-00045-00-PV	COUNTY LAKE	TOTAL SHEETS 195	SHEET NO. 34
CONTRACT NO. 63640				
FED. ROAD DIST. NO. 1 ILLINOIS FED. AID PROJECT				