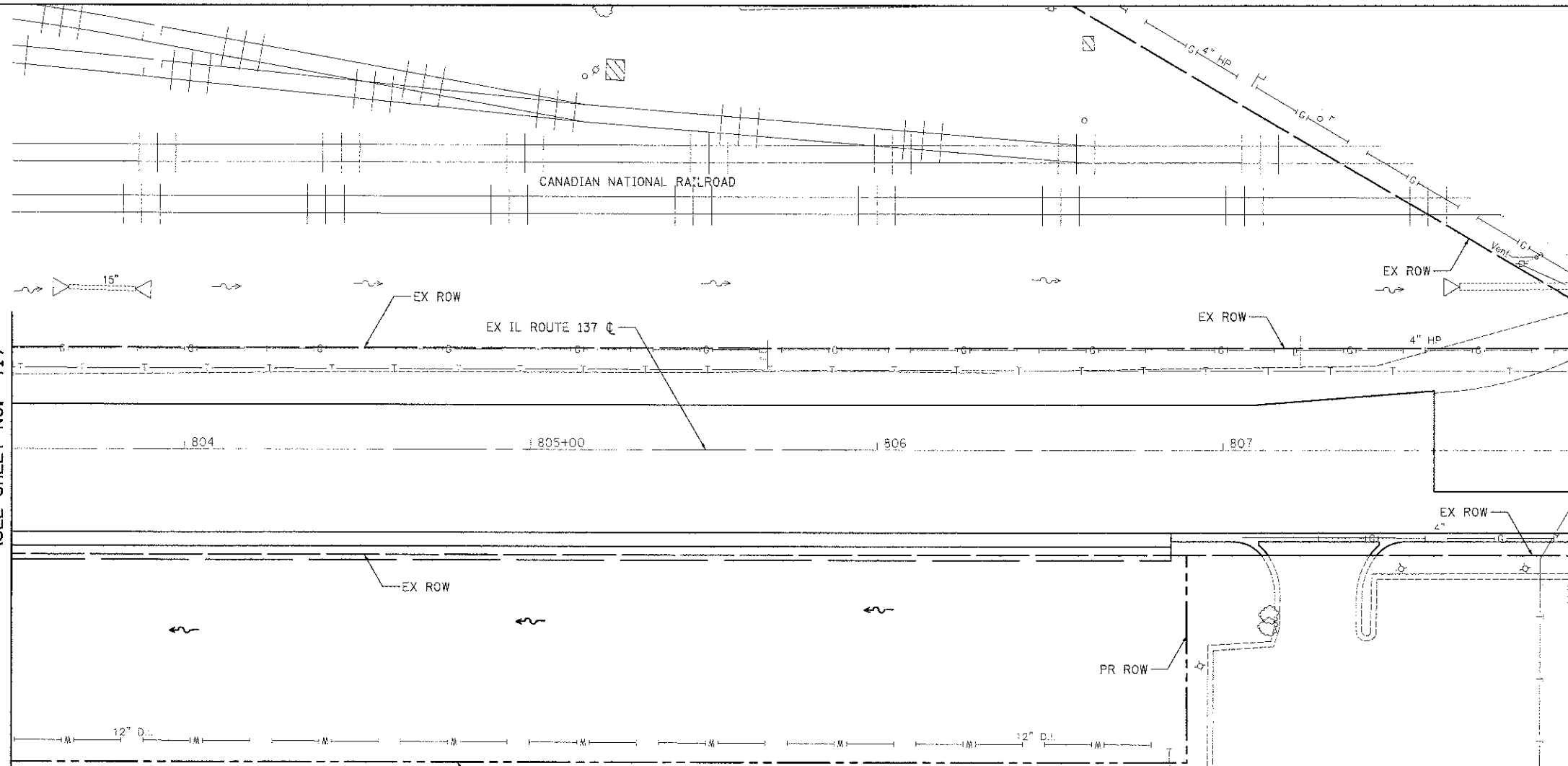


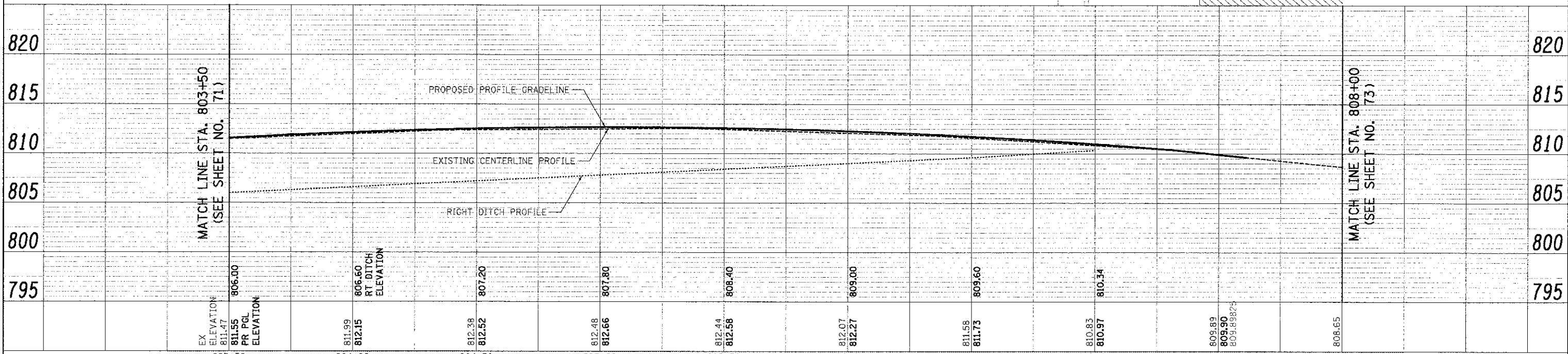
PI AN	DATE
BY	DATE
REVISIONS	
NO.	DATE
BY	DATE
BY	DATE
BY	DATE

PROF. I.E.	DATE
BY	DATE
REVISIONS	
NO.	DATE
BY	DATE
BY	DATE
BY	DATE



**NOTES**

1. WORK ON ALL IDENTIFIED DRAIN TILES SHALL BE COORDINATED WITH THE LCSMC FIELD REPRESENTATIVE.
2. ANY DRAIN TILES ENCOUNTERED DURING THE WORK WILL BE REPAIRED, REROUTED, OR CONNECTED TO THE STORM SEWER SYSTEM, AS APPROPRIATE, TO MAINTAIN DRAINAGE. FOR EACH DRAIN TILE ENCOUNTERED, REPORT TO THE LCSMC THE LOCATION, SIZE, MATERIAL, CONDITION, AMOUNT OF FLOW, DIRECTION OF FLOW, AND DEPTH OF COVER.



USER NAME = ods  
 FILE NAME = ...2189 ant-drain11.dgn  
 PLOT SCALE = 20.0000' / 1" =  
 PLOT DATE = 2/2/2012

DESIGNED - MJP  
 DRAWN - MJP  
 CHECKED - DNM  
 DATE - 02/06/12

REVISED  
 REVISED  
 REVISED  
 REVISED

**STATE OF ILLINOIS  
 DEPARTMENT OF TRANSPORTATION**

**IL ROUTE 137  
 DRAINAGE AND UTILITIES**

SCALE: 1" = 20'  
 SHEET NO. 11 OF 15 SHEETS  
 S+A. 803+50 TO STA. 808+00

F.A.U. RTE.	SECTION	COUNTY	TOTAL SHEETS	SHEET NO.
198	00-00045-00-PV	LAKE	195	72
CONTRACT NO. 63640				
FED. ROAD DIST. NO. 1 ILLINOIS FED. AID PROJECT				