

SOIL PROFILE DRAWING
 MIDLAND STANDARD ENGINEERING & TESTING, INC.
 ATKINSON ROAD IMPROVEMENTS STAGE 1A
 GRAYSLAKE, ILLINOIS
 MSET PROJECT NO. 88297
 JANUARY 2009

LEGEND

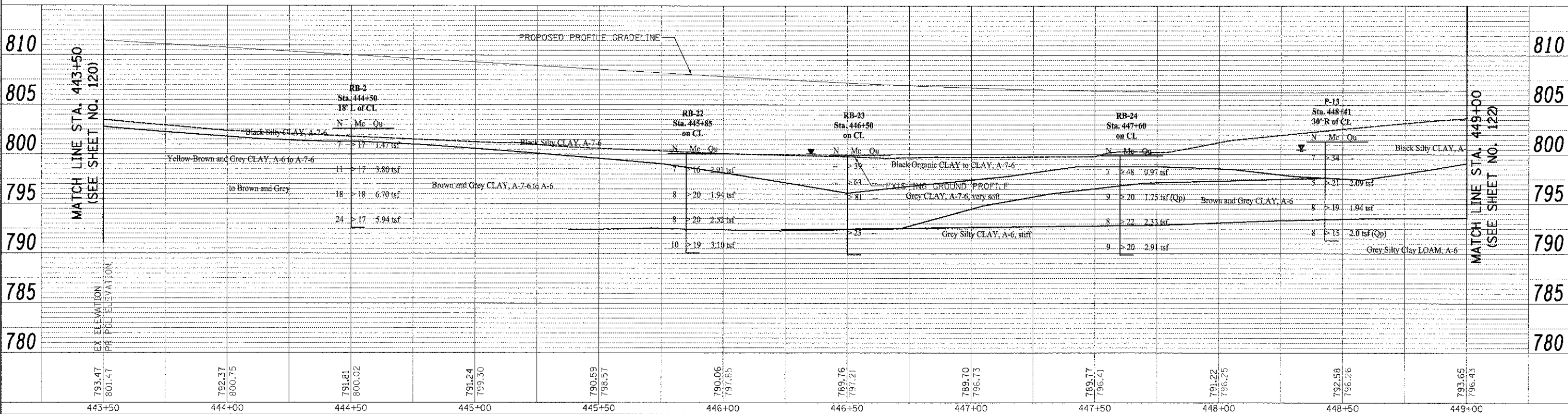
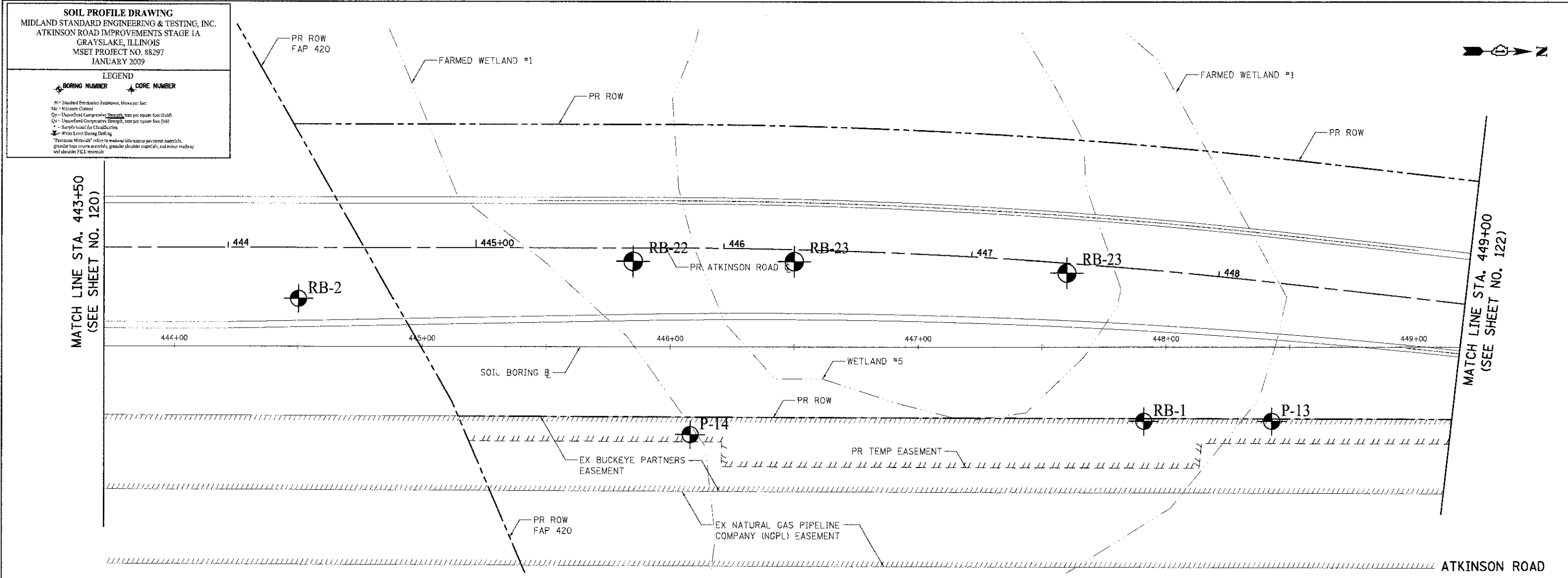
BORING NUMBER **CORE NUMBER**

N = Standard Penetration Test, blows per foot
 Mc = Moisture Content
 Qp = Unconfined Compressive Strength, tons per square foot (tsf)
 C_u = Unconfined Compressive Strength, kips per square foot (ksf)
 * = Sample tested for Classification
 W = Water Level During Drilling

“Excavate Material” refers to roadway/obstructions pavement materials, granular base course material, granular shoulder material, and minor roadway and shoulder FILL materials

PLAN	REVISED	DATE
NO.	BY	
NO.	BY	
NO.	BY	
NO.	BY	
NO.	BY	

PROF. I.I.	DATE
NO.	BY
NO.	BY
NO.	BY
NO.	BY
NO.	BY



443+50	444+00	444+50	445+00	445+50	446+00	446+50	447+00	447+50	448+00	448+50	449+00
793.47 801.47	792.37 800.75	791.81 800.02	791.24 799.30	790.59 798.57	790.06 797.85	789.76 797.21	789.70 796.73	789.77 796.41	791.22 796.25	792.58 796.26	793.65 796.13



USER NAME = eds
 FILE NAME = ...2189-ahtr-sa103.dwg
 PLOT SCALE = 20.0000 / 1"
 PLOT DATE = 2/2/2012

DESIGNED - MSET
 DRAWN - MSET
 CHECKED - MSET
 DATE - 02/06/12

REVISED -
 REVISED -
 REVISED -
 REVISED -

STATE OF ILLINOIS
DEPARTMENT OF TRANSPORTATION

ATKINSON ROAD
SOIL BORING LOCATION PLAN & SOIL PROFILE

SCALE: 1" = 20' SHEET NO. 3 OF 13 SHEETS STA. 443+50 TO STA. 449+00

F.A.U. RTE. 198	SECTION 00-00045-00-PV	COUNTY LAKE	TOTAL SHEETS 195	SHEET NO. 121
CONTRACT NO. 63640				
FED. ROAD DIST. NO. 1 ILLINOIS-FED. AID PROJECT				