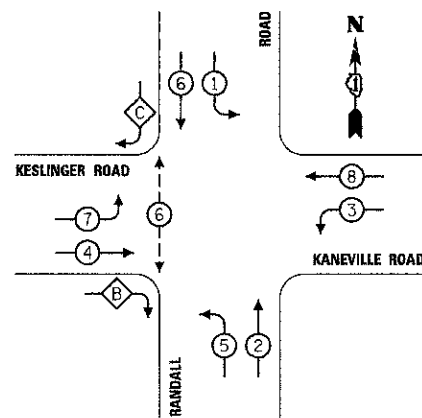
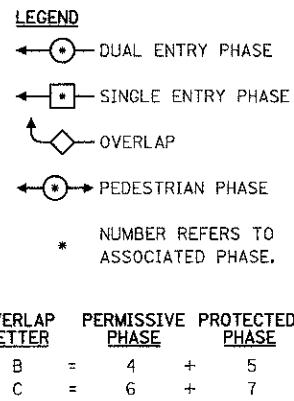
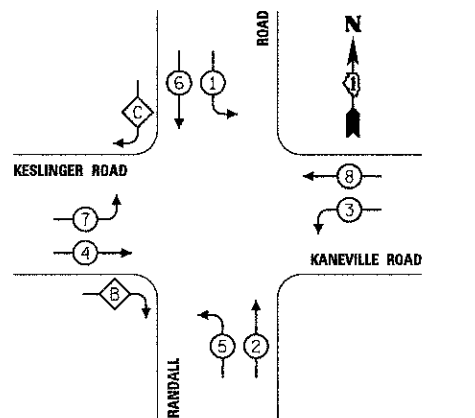


**SCHEDULE OF QUANTITIES**

**PAY ITEM**

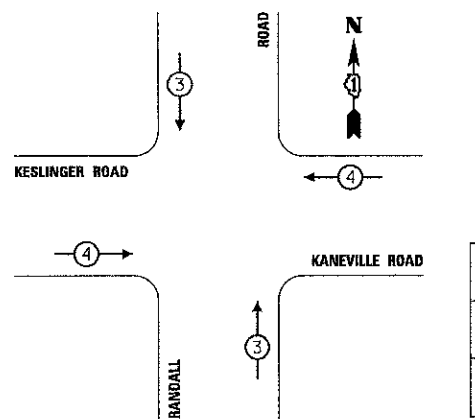
- UNDERGROUND CONDUIT, 2 1/2" DIA., GALVANIZED STEEL
- UNDERGROUND CONDUIT, 4" DIA., GALVANIZED STEEL
- MAINTENANCE OF EXISTING TRAFFIC SIGNAL INSTALLATION
- GROUNDING EXISTING HANDHOLE FRAME AND COVER
- ELECTRIC CABLE IN CONDUIT, SIGNAL NO. 14 2C
- ELECTRIC CABLE IN CONDUIT, SIGNAL NO. 14 3C
- ELECTRIC CABLE IN CONDUIT, SIGNAL NO. 14 7C
- TRAFFIC SIGNAL POST, GALVANIZED STEEL 16 FT.
- CONCRETE FOUNDATION, TYPE A
- DRILL EXISTING HANDHOLE
- SIGNAL HEAD, LED, 2-FACE, 5-SECTION, BRACKET MOUNTED
- PEDESTRIAN SIGNAL HEAD, LED, 1-FACE, BRACKET MOUNTED WITH COUNTDOWN TIMER
- DETECTOR LOOP, TYPE I
- PEDESTRIAN PUSH-BUTTON
- MODIFY EXISTING CONTROLLER
- REMOVE EXISTING TRAFFIC SIGNAL EQUIPMENT
- REMOVE EXISTING CONCRETE FOUNDATION
- RE-OPTIMIZE TRAFFIC SIGNAL SYSTEM LEVEL 1
- ELECTRIC CABLE IN CONDUIT, GROUNDING CONDUCTOR, NO. 6, 1C

UNITS	QUANTITY
FOOT	8
FOOT	112
EACH	1
EACH	1
FOOT	620
FOOT	630
FOOT	740
EACH	1
FOOT	4
EACH	2
EACH	1
EACH	2
FOOT	48
EACH	2
EACH	1
EACH	1
EACH	1
FOOT	150



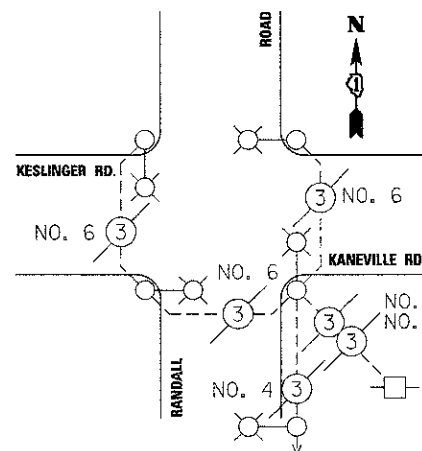
**EXISTING PHASE DESIGNATION DIAGRAM**

**PROPOSED PHASE DESIGNATION DIAGRAM**

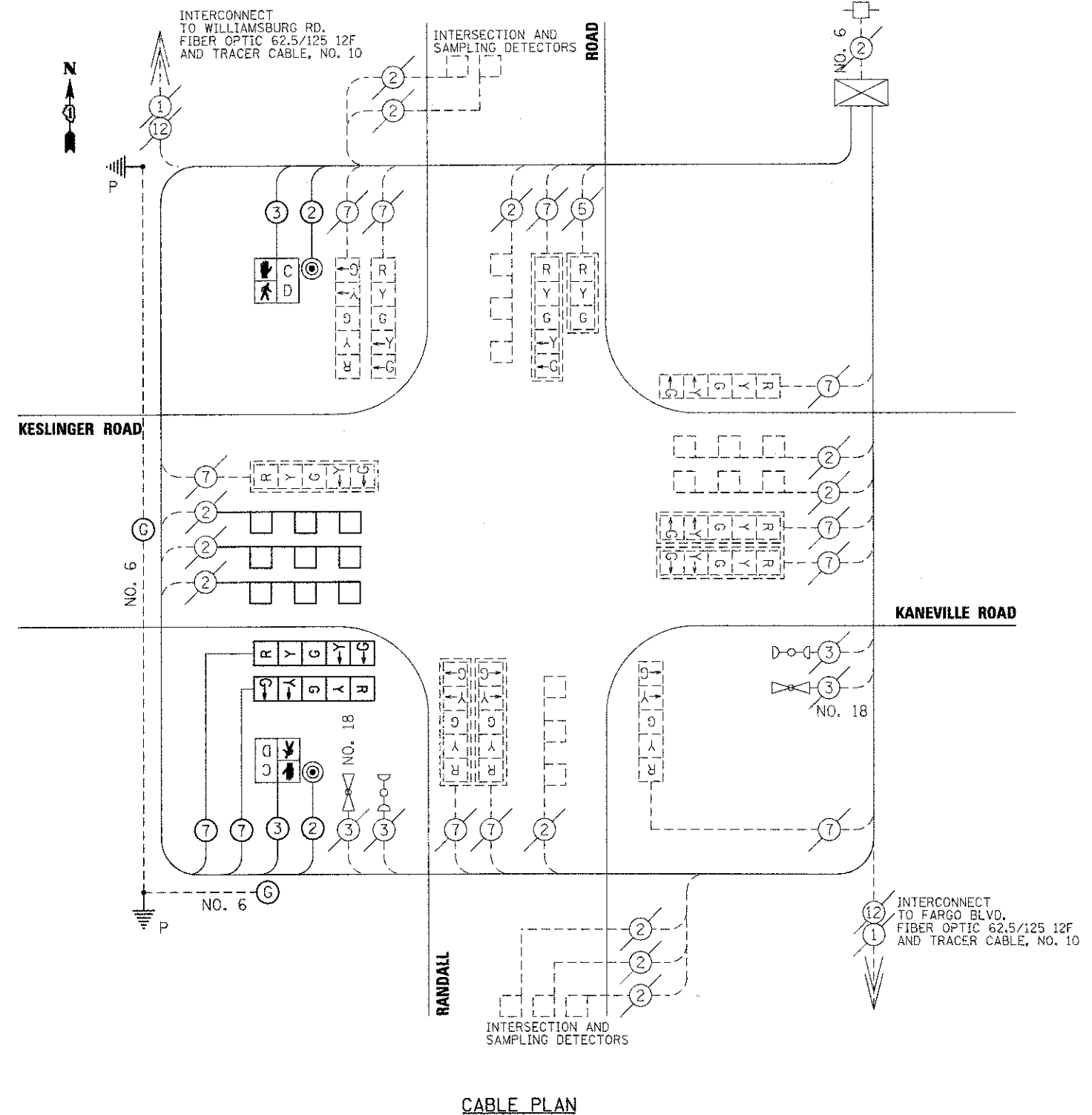


EXISTING/ PROPOSED EMERGENCY VEHICLE PREEMPTOR	
EMERGENCY VEHICLE PREEMPTOR	3 4
MOVEMENT	↓ ↑ ← →

**EMERGENCY VEHICLE PREEMPTION SEQUENCE**



**EXISTING STREET LIGHTING CABLE PLAN**



**CABLE PLAN**

FILE NAME = M:\Projects\2010\1008\1. Source\PEET\Roads\Civil\10gm\Sh-A.TS\_03.dwg

**WILLS BURKE KELSEY ASSOCIATES LTD.**  
 110 West Main Street, Suite 201  
 St. Charles, Illinois 60174  
 (630) 443-7755

USER NAME = #USER#	DESIGNED - DPB	REVISED -
PLOT SCALE = AS SHOWN	DRAWN - NDP	REVISED -
PLOT DATE = 5/11/2012	CHECKED - DPB	REVISED -
	DATE - 5/14/12	REVISED -

**STATE OF ILLINOIS  
 DEPARTMENT OF TRANSPORTATION**

**TRAFFIC SIGNAL MODIFICATION PLAN  
 & CABLE PLAN**

SCALE: AS SHOWN SHEET NO. 21 OF 79 SHEETS STA. TO STA.

F.A.P. RTE. 0336	SECTION 00-00259-00-BT	COUNTY KANE	TOTAL SHEETS 79	SHEET NO. 21
CONTRACT NO. 63667				
FED. ROAD DIST. NO. 1 ILLINOIS FED. AID PROJECT				