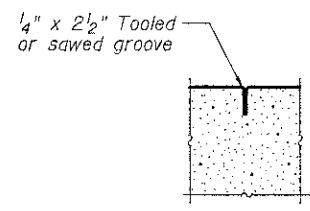
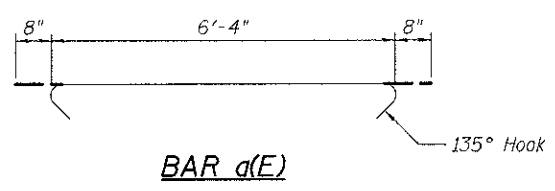


**PLAN
TUNNEL FLOOR**

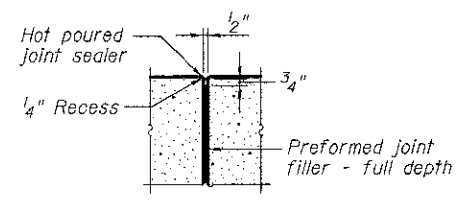
MIN. BAR LAP
#5 bar = 3'-0"

BILL OF MATERIAL

Bar	No.	Size	Length	Shape
a(E)	96	#5	7'-8"	↔
b(E)	10	#5	26'-5"	—
b1(E)	10	#5	25'-4"	—
b2(E)	10	#5	24'-5"	—
Concrete Structures			Cu. Yd.	53.3
Reinforcement Bars, Epoxy Coated			Pound	1,570



**DETAIL
CONTRACTION JOINT**



**DETAIL
EXPANSION JOINT**

NOTES

1. Bars called out as 5 x 2- #5 bars indicates 5 lines of bars with 2 lengths per line. Longitudinal bars shall not pass through the expansion joints.
2. The b(E) and b2(E) bars shall be extended 2'-0" into the tunnel concrete approach slabs at each end.
3. The tunnel floor concrete shall be colored and the coloring shall match the coloring of the approach PCC sidewalk. The coloring of the concrete shall adhere to the requirements set forth in the Special Provision "Portland Cement Concrete Sidewalk 6 Inch, Special." In addition, the surface of the tunnel floor shall have a heavy broom finish. The coloring of concrete and broom finish will not be paid for separately, but shall be included in the Contract unit price for Concrete Structures.
4. Expansion joints and contraction joints will not be paid for separately, but shall be included in the Contract unit price for Concrete Structures.

FILE NAME = M:\P\Projects\2010\180091_Southern\11\Acad\Struct\1\TunnelFloorDetail.dgn
 WILLS BURKE KELSEY ASSOCIATES LTD.
 110 West Main Street, Suite 201
 St. Charles, Illinois 60174
 (830) 443-7755

WILLS BURKE KELSEY ASSOCIATES LTD.
 110 West Main Street, Suite 201
 St. Charles, Illinois 60174
 (830) 443-7755

USER NAME = rparsons	DESIGNED - DLS	REVISED -
	CHECKED - AEU	REVISED -
PLOT SCALE =	DRAWN - DLS	REVISED -
PLOT DATE = 5/11/2012	CHECKED - AEU	REVISED -

**STATE OF ILLINOIS
DEPARTMENT OF TRANSPORTATION**

**TUNNEL FLOOR DETAILS
STRUCTURE NO. 045-3181**

SHEET NO. 4 OF 20 SHEETS

F.A.P. RTE.	SECTION	COUNTY	TOTAL SHEETS	SHEET NO.
0336	00-00259-00-BT	KANE	79	32
CONTRACT NO. 63667				
FED. ROAD DIST. NO.	ILLINOIS FED. AID PROJECT			