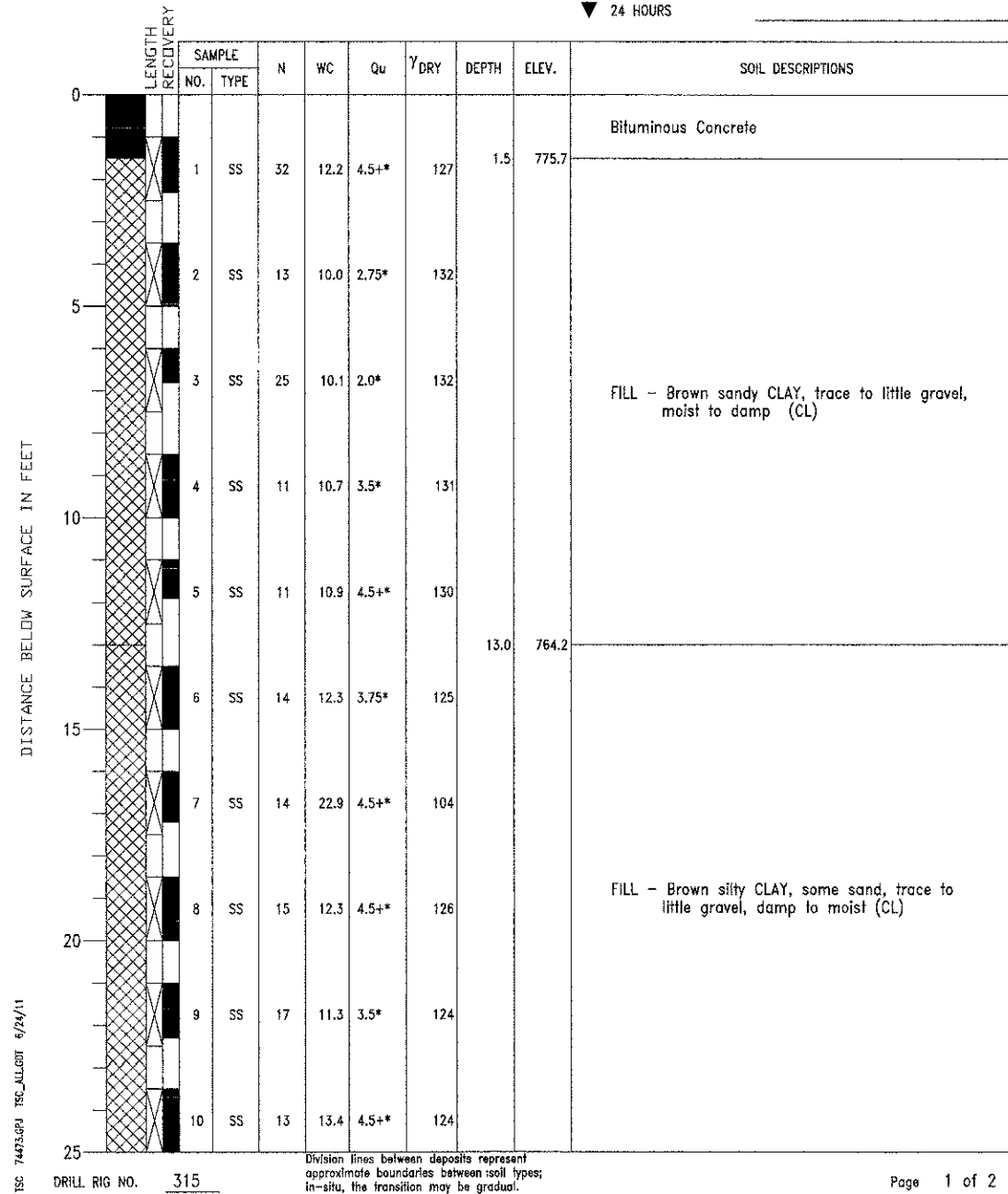


PROJECT South Street Trail Extension, Geneva, Illinois
 CLIENT Willis Burke Kelsey Associates, Ltd., St. Charles, Illinois
 BORING 6 DATE STARTED 1-28-10 DATE COMPLETED 1-28-10 JOB L-74,473



ELEVATIONS
 GROUND SURFACE 777.2
 END OF BORING 727.2

WATER LEVEL OBSERVATIONS
 WHILE DRILLING Dry
 AT END OF BORING Dry
 24 HOURS

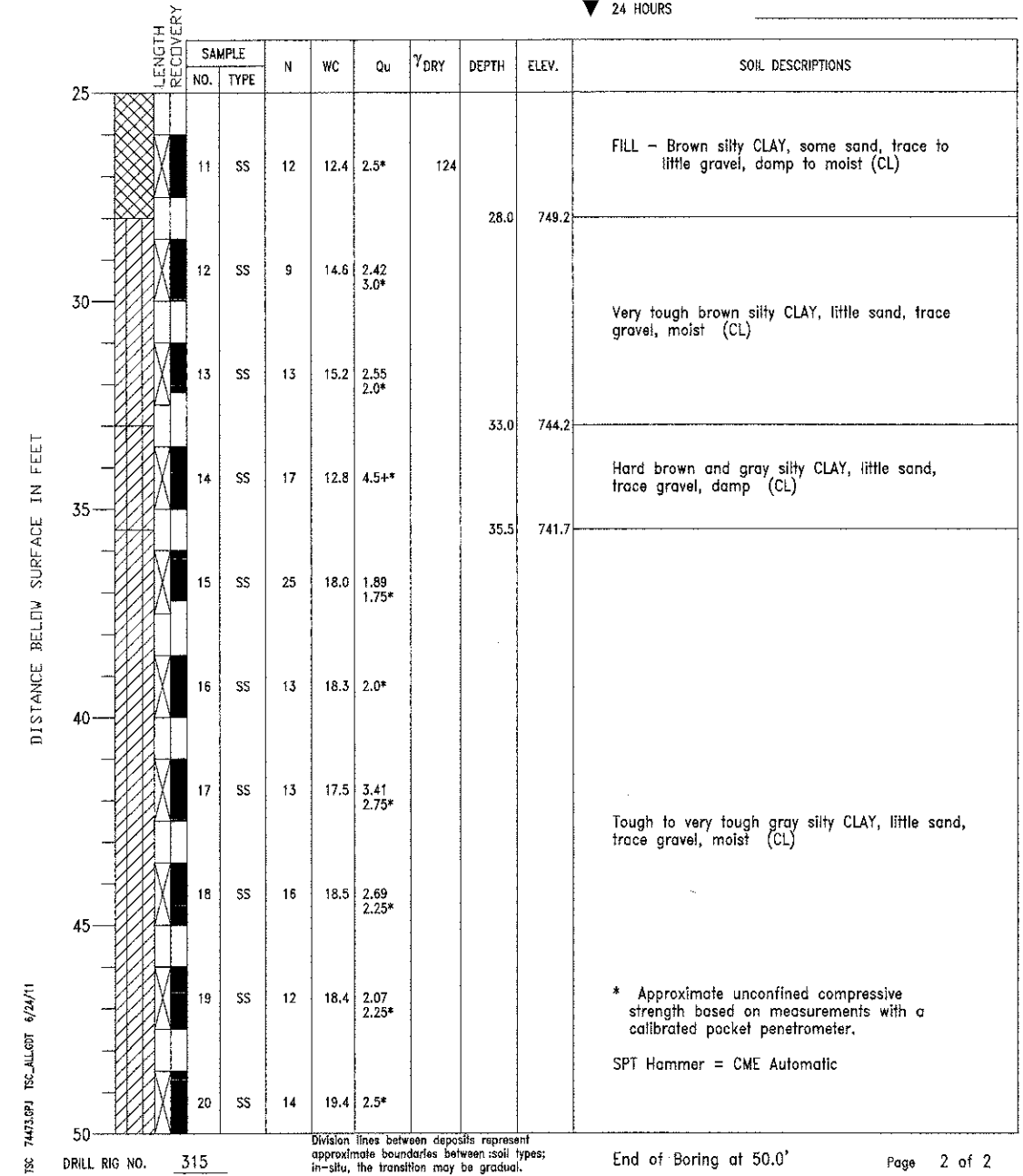


PROJECT South Street Trail Extension, Geneva, Illinois
 CLIENT Willis Burke Kelsey Associates, Ltd., St. Charles, Illinois
 BORING 6 DATE STARTED 1-28-10 DATE COMPLETED 1-28-10 JOB L-74,473



ELEVATIONS
 GROUND SURFACE 777.2
 END OF BORING 727.2

WATER LEVEL OBSERVATIONS
 WHILE DRILLING Dry
 AT END OF BORING Dry
 24 HOURS



FILE NAME: K:\Projects\2010\1980\1980.dwg
 South Street Trail Extension\Drawings\Boring\Boring_6.dwg
 TSC 74473.dwg TSC ALLLOT 6/24/11

WILLS BURKE KELSEY ASSOCIATES LTD.
 116 West Main Street, Suite 201
 St. Charles, Illinois 60174
 (630) 443-7755

USER NAME = ngarr19	DESIGNED -	REVISED -
PLOT SCALE =	CHECKED -	REVISED -
PLOT DATE = 5/11/2012	DRAWN - DLS	REVISED -
	CHECKED - AEU	REVISED -

**STATE OF ILLINOIS
 DEPARTMENT OF TRANSPORTATION**

**SOIL BORING LOGS V
 STRUCTURE NO. 045-3181**

SHEET NO. 18 OF 20 SHEETS

F.A.P. RTE.	SECTION	COUNTY	TOTAL SHEETS	SHEET NO.
0336	00-00259-00-BT	KANE	79	46
CONTRACT NO. 63667				
FED. ROAD DIST. NO. ILLINOIS FED. AID PROJECT				