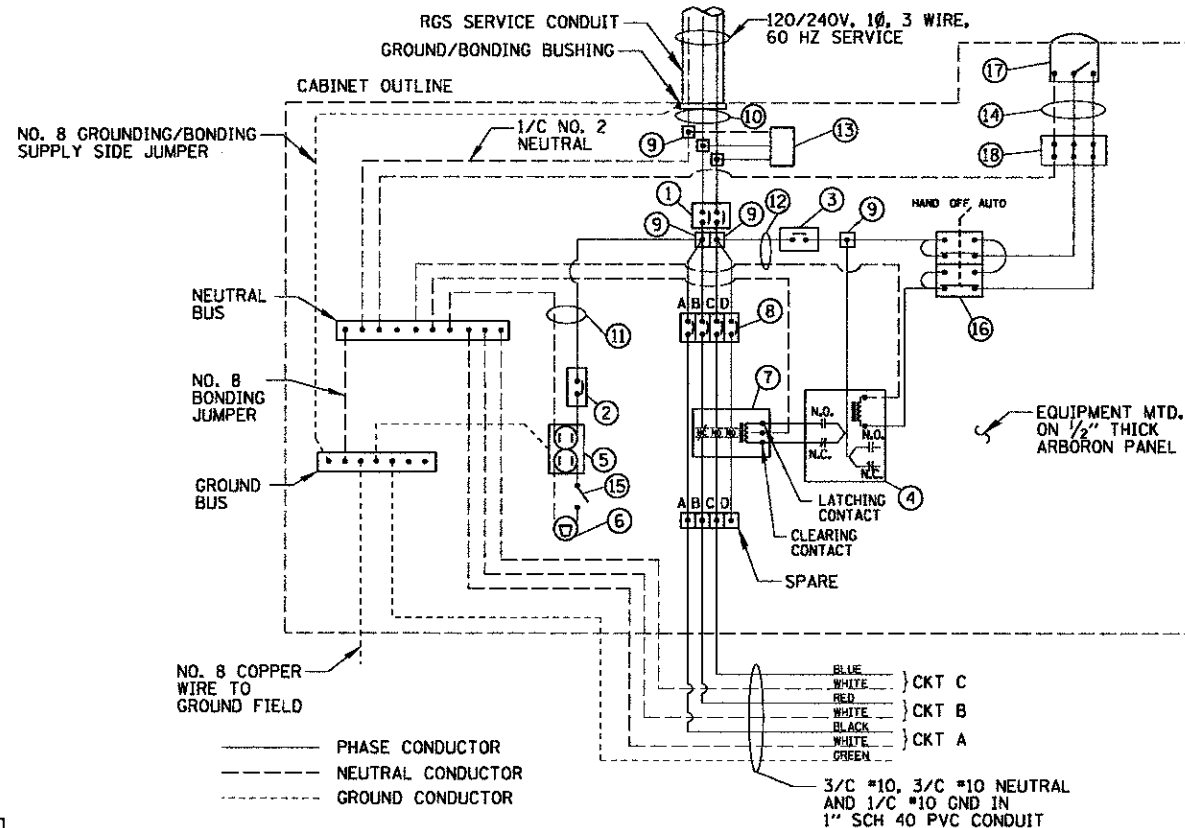


| ITEM | SPECIFICATION | MFG./MODEL NO. OR APPROVED EQUAL |
|---|---|---|
| ① MAIN CIRCUIT BREAKER | 100 AMPERE, 2P, 240V SERVICE RATING, 10KAIC | SIEMENS NO. ED22B100 |
| ② LAMPHOLDER CIRCUIT BREAKER | 20 AMPERE, 1P, 120V RATING, 10KAIC | SIEMENS NO. ED21B020 |
| ③ PHOTOELECTRIC/CONTROL CIRCUIT BREAKER | 15 AMPERE, 1P, 120V RATING, 10KAIC | SIEMENS NO. ED21B015 |
| ④ AUXILIARY RELAY | 120 V OPERATED DPDT 60 HZ COIL 2 NO & 2 NC CONTACTS | MAGNECRAFT NO. 389 FXBC1 - 120A |
| ⑤ CABINET RECEPTACLE AND BOX | COMMERCIAL GRADE GFCI 20A/120V, MOUNTED IN A WEATHERPROOF CAST ALUMINUM SINGLE GANG BOX WITH WEATHERPROOF COVER | RECEPTACLE: LEVITON NO. 8899, BOX: APPLETON NO. WSM150 COVER: APPLETON NO. WHG1 |
| ⑥ CABINET LIGHT AND BOX | 120V WEATHERPROOF LAMPHOLDER MOUNTED IN A CAST ALUMINUM BOX & EXT. GRADE 100W LAMP | LIGHT & BOX: RAB NO. VX100DG |
| ⑦ CONTACTOR | 30 AMPERE, 3 POLE, 120 V COIL, MECH HELD W/ 2 N.O. & 1 N.C. CONTACTS | SQUARE D NO. 8903 LX021 V02 |
| ⑧ BRANCH LINE CIRCUIT BREAKERS | 4 - 20 AMPERE, 1P, 120V RATING, 10KAIC | SIEMENS NO. ED21B020 |
| ⑨ POWER DISTRIBUTION BLOCK | 600 VOLT, INSULATED, SIZE AS REQUIRED | MARATHON |
| ⑩ SERVICE CABLES | 3-600V (XLP-TYPE USE) NO. 2 | N/A |
| ⑪ LAMPHOLDER WIRE | 2-600V XLP NO. 12 | N/A |
| ⑫ CONTROL WIRE | 2-600V XLP NO. 12 | N/A |
| ⑬ SURGE ARRESTOR | 10 K AMPERE RATING | SQUARE D NO. SDSA 1175 |
| ⑭ PHOTOELECTRIC CONTROL WIRE | 3-600V XLP NO. 12 | N/A |
| ⑮ DOOR SWITCH | 20A/120V, DOOR MOUNTED SNAP ACTION TYPE PLUNGER SWITCH | OMRON NO. A-20G0-K |
| ⑯ HAND-AUTO-OFF CONTROL SWITCH | 20A, 3 POS. MTD IN CAST ALUM. ENCLOSURE | SQUARE D NO. 9001 KYK 111 |
| ⑰ PHOTOCELL | 120V, MTD. ON CABINET, DELAY TYPE, SPST-NC | FISHER PIERCE NO. FPFA-105M |
| ⑱ TERMINAL BLOCK | 3 TERMINAL, DOUBLE ROW, 30A, 240V | CINCH NO. 3-142 |

- NOTES:**
- ALL ITEMS LISTED IN LIGHTING CONTROLLER COMPONENT SCHEDULE SHALL BE CONSIDERED INCIDENTAL TO THE PRICE BID FOR "LIGHTING CONTROLLER" INCLUDING CABINET AND FOUNDATION.
 - THE LIGHTING CONTROLLER TOGETHER WITH ALL OF ITS COMPONENTS SHALL BE UL LISTED AS AN "ENCLOSED INDUSTRIAL CONTROL PANEL" UNDER UL508A.
 - CONNECTION OF SURGE ARRESTOR TO LINE SIDE OF MAIN CIRCUIT BREAKER SHALL NOT BE "DOUBLE LUGGED."
 - CONTRACTOR SHALL PROVIDE 3 LAMINATED COPIES OF AS-BUILT CONTROLLER WIRING DIAGRAM AND ONE LINE DIAGRAM IN HOLDER MOUNTED TO INSIDE OF CABINET DOOR.

LIGHTING CONTROLLER COMPONENT SCHEDULE



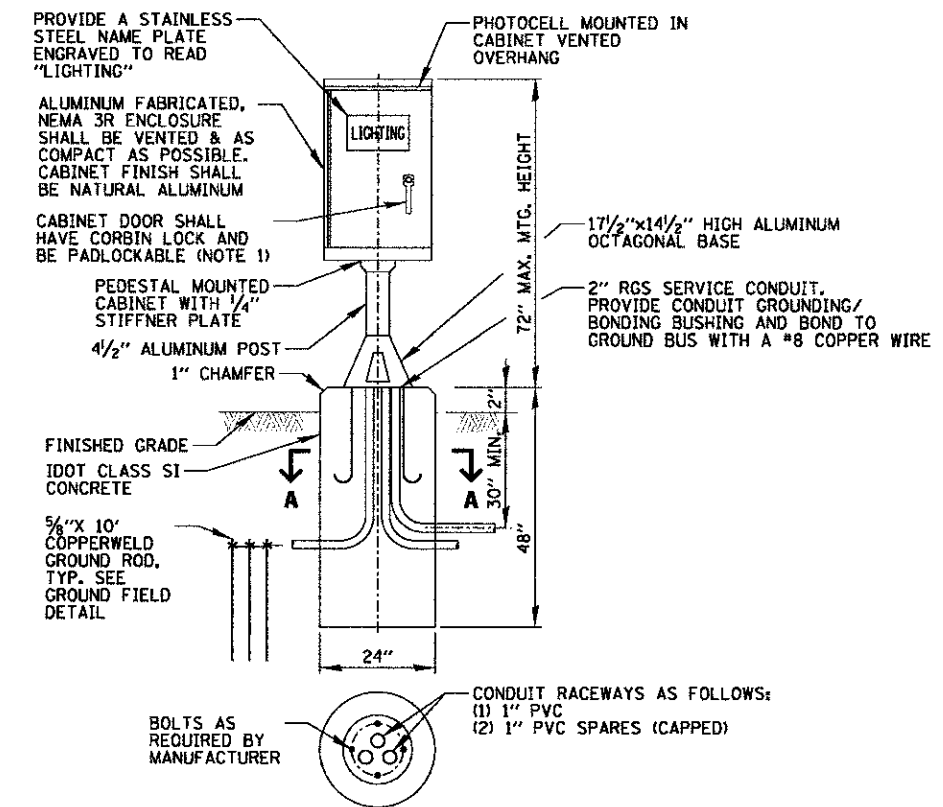
LIGHTING CONTROLLER WIRING DETAIL

N.T.S.

| CIRCUIT ID | 50 W LUMINAIRES | LOAD (WATTS) | TOTAL CIRCUIT LOAD (WATTS) |
|------------|-----------------|--------------|----------------------------|
| A | 4 | 60 W | 240 W |
| B | 4 | 60 W | 240 W |
| C | 4 | 60 W | 240 W |
| D | - | - | - |
| TOTAL | 12 | N/A | 720 W |

LIGHTING CONTROLLER CIRCUIT LOADS

| SEQUENCE OF OPERATION | | | |
|-----------------------|--|-------------------|-------|
| CKT | FIXTURES CONTROLLED | TIME OF OPERATION | |
| | | DAY | NIGHT |
| A | INTERNAL CEILING MOUNTED FIXTURES AND EMERGENCY LIGHTS | ON | ON |
| B | INTERNAL CEILING MOUNTED FIXTURES | ON | OFF |
| C | EXTERNAL WALL MOUNTED FIXTURES | OFF | ON |



- NOTES:**
- SEE LIGHTING PLAN DRAWINGS FOR DOOR ORIENTATION.
 - ITEMS SHOWN ABOVE INCLUDING CABINET, CONCRETE FOUNDATION SHALL BE INCLUDED IN THE LIGHTING CONTROLLER PAY ITEM, EXCEPT FOR THE GROUND RODS AND SERVICE CONDUIT & WIRE WHICH SHALL BE PAID SEPARATELY.
 - A 30"X24"Dx5" THICK CONCRETE WORK PAD SHALL BE PROVIDED IN FRONT OF THE CABINET. TOP OF PAD SHALL BE 1" ABOVE GRADE AND HAVE A 3/4" CHAMFER ALL AROUND.

LIGHTING CONTROLLER CABINET AND FOUNDATION

N.T.S.

NOTE:
ALL CONDUCTORS IN THE UNIT DUCT RUNS SHALL HAVE INDIVIDUALLY COLOR CODED INSULATION THROUGHOUT THE ENTIRE LENGTH OF THE CONDUCTOR. THE COLOR IDENTIFICATION FOR THE SYSTEM GROUND SHALL BE GREEN.

FILE NAME: M:\Projects\2012\10\08\11 SouthSuperEIT\cadd\Civil\Lighting\LT_D.dwg

CB CHRISTOPHER B. BURKE ENGINEERING, LTD.
2675 W. Higgins Road, Suite 900
Rosemont, Illinois 60018
(847) 823-0800

WBK WILLS BURKE KELSEY ASSOCIATES LTD.
110 West Main Street, Suite 201
St. Charles, Illinois 60154

| | | |
|-----------------------|----------------|-----------|
| USER NAME = mparris | DESIGNED - AJD | REVISED - |
| PLOT SCALE = | DRAWN - KWB | REVISED - |
| PLOT DATE = 5/18/2012 | CHECKED - AJD | REVISED - |
| | DATE - 5/14/12 | REVISED - |

STATE OF ILLINOIS
DEPARTMENT OF TRANSPORTATION

| | | | | | | |
|------------------|---------------------------|-------------|----------------|--------|--------------------|-----------|
| TUNNEL LIGHTING | | F.A.P. RTE. | SECTION | COUNTY | TOTAL SHEETS | SHEET NO. |
| DETAILS (1 OF 2) | | 0336 | 00-00259-00-BT | KANE | 79 | 51 |
| SCALE: | SHEET NO. 51 OF 79 SHEETS | STA. | TO STA. | | CONTRACT NO. 63667 | |

| | |
|---------------------|---------------------------|
| FED. ROAD DIST. NO. | ILLINOIS FED. AID PROJECT |
|---------------------|---------------------------|