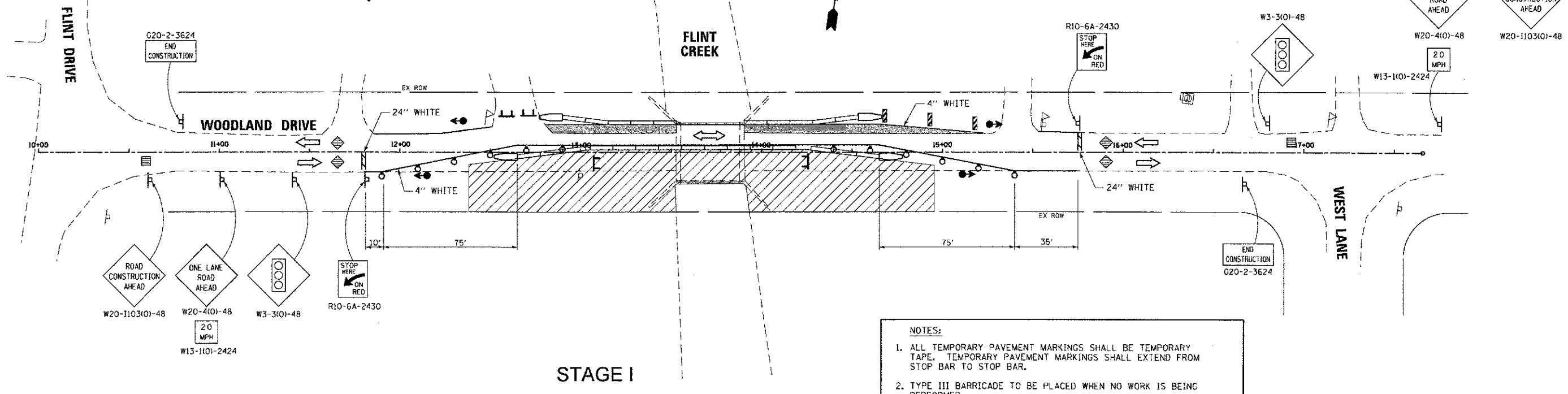
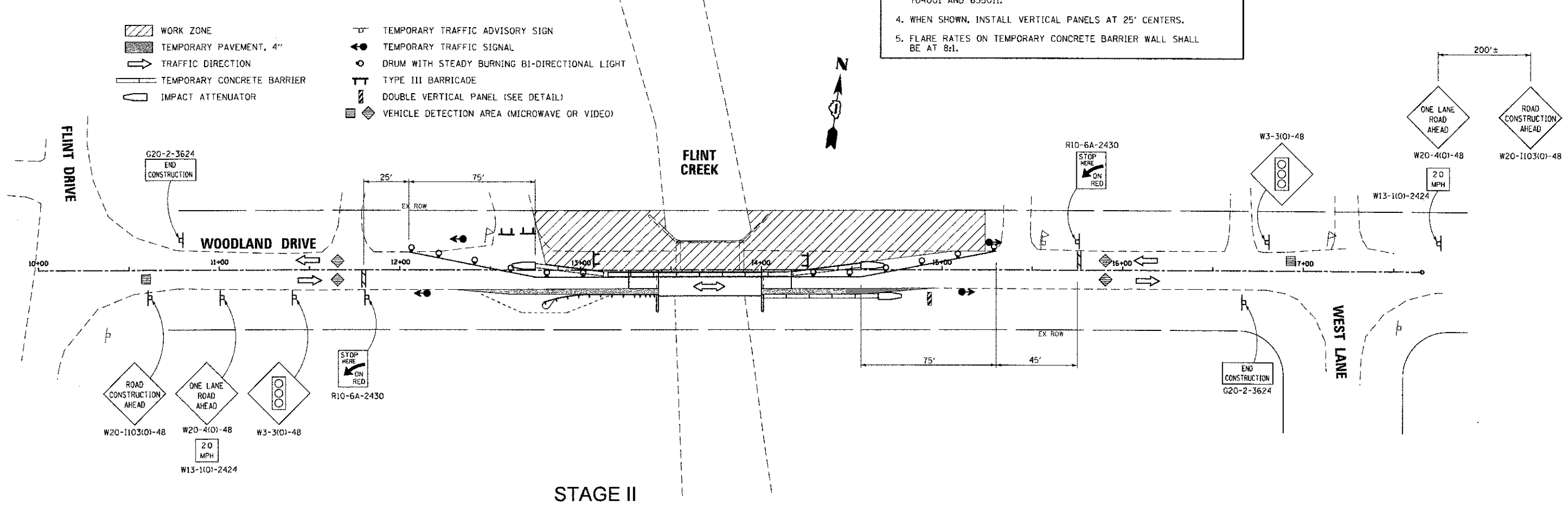


- WORK ZONE
- TEMPORARY PAVEMENT, 4"
- TRAFFIC DIRECTION
- TEMPORARY CONCRETE BARRIER
- IMPACT ATTENUATOR
- TEMPORARY TRAFFIC ADVISORY SIGN
- TEMPORARY TRAFFIC SIGNAL
- DRUM WITH STEADY BURNING BI-DIRECTIONAL LIGHT
- TYPE III BARRICADE
- DOUBLE VERTICAL PANEL (SEE DETAIL)
- VEHICLE DETECTION AREA (MICROWAVE OR VIDEO)



- NOTES:**
- ALL TEMPORARY PAVEMENT MARKINGS SHALL BE TEMPORARY TAPE. TEMPORARY PAVEMENT MARKINGS SHALL EXTEND FROM STOP BAR TO STOP BAR.
 - TYPE III BARRICADE TO BE PLACED WHEN NO WORK IS BEING PERFORMED.
 - INSTALL BARRIER WALL MARKERS AT 25' CENTERS. SEE STANDARDS 704001 AND 635011.
 - WHEN SHOWN, INSTALL VERTICAL PANELS AT 25' CENTERS.
 - FLARE RATES ON TEMPORARY CONCRETE BARRIER WALL SHALL BE AT 8:1.

- WORK ZONE
- TEMPORARY PAVEMENT, 4"
- TRAFFIC DIRECTION
- TEMPORARY CONCRETE BARRIER
- IMPACT ATTENUATOR
- TEMPORARY TRAFFIC ADVISORY SIGN
- TEMPORARY TRAFFIC SIGNAL
- DRUM WITH STEADY BURNING BI-DIRECTIONAL LIGHT
- TYPE III BARRICADE
- DOUBLE VERTICAL PANEL (SEE DETAIL)
- VEHICLE DETECTION AREA (MICROWAVE OR VIDEO)



McDonough Associates Inc.
 Engineers / Architects
 180 North Station Ave. Chicago, Illinois 60601

FILE NAME = 10030-SHT-MOT02.dgn	USER NAME = johrhart	DESIGNED -	REVISED -	STATE OF ILLINOIS DEPARTMENT OF TRANSPORTATION	MAINTENANCE OF TRAFFIC STAGE I AND STAGE II	F.A.P. RTE.	SECTION	COUNTY	TOTAL SHEETS	SHEET NO.
PLOT SCALE = 1:30	CHECKED -	REVISED -	09-00010-00-BR			LAKE	41	12		
PLOT DATE = 05/14/12	DATE = 05/14/12	REVISED -	MOT-2			CONTRACT NO. 63716				
						ILLINOIS FED. AID PROJECT				