

STATE OF ILLINOIS
DEPARTMENT OF TRANSPORTATION
DIVISION OF HIGHWAYS

PLANS FOR PROPOSED FEDERAL AID HIGHWAY

FAP 344 (U.S. ROUTE 45 – LAKE STREET)
PARK STREET TO WELLINGTON AVENUE
STREETScape IMPROVEMENTS
SECTION 11-00095-00-LS
PROJECT TE-00D1 (856)
VILLAGE OF MUNDELEIN
LAKE COUNTY
C-91-413-11

F.A.U. RTE.	SECTION	COUNTY	TOTAL SHEETS	SHEET NO.
344	11-00095-00-LS	LAKE	12	1
		ILLINOIS	CONTRACT NO. 63724	

FOR INDEX OF SHEETS, SEE SHEET NO. 2
FOR HIGHWAY STANDARDS, SEE SHEET NO. 2

TRAFFIC DATA

ADT:
LAKE STREET 25,300 VPD

POSTED SPEED

25 MPH (EXISTING)
25 MPH (PROPOSED)

DESIGN SPEED

30 MPH (EXISTING)
30 MPH (PROPOSED)

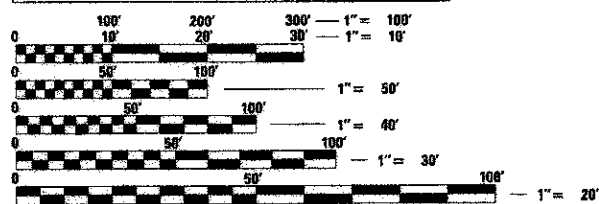
DESIGN DESIGNATION

LAKE STREET - PRINCIPAL ARTERIAL

JULIE
JOINT
UTILITY
LOCATION
INFORMATION FOR
EXCAVATION
CALL 811



Know what's below.
Call before you dig.



FULL SIZE PLANS HAVE BEEN PREPARED USING STANDARD
ENGINEERING SCALES. REDUCED SIZED PLANS WILL NOT
CONFORM TO STANDARD SCALES. IN MAKING MEASUREMENTS
ON REDUCED PLANS, THE ABOVE SCALES MAY BE USED.



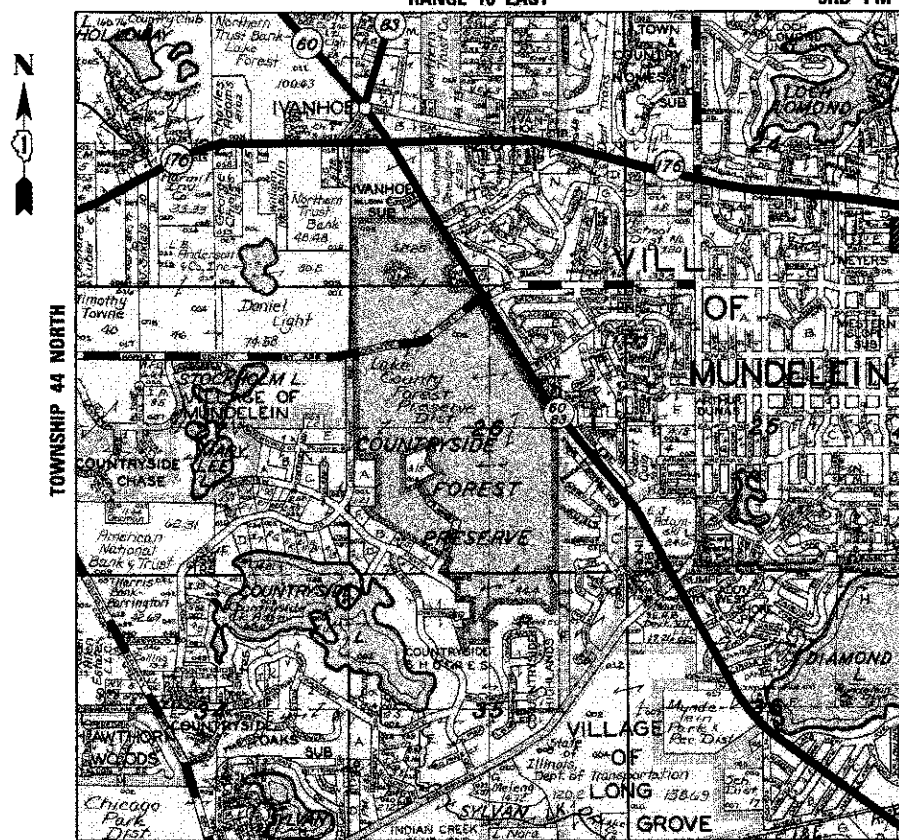
420 NORTH FRONT STREET, SUITE 100 | McHENRY, ILLINOIS 60050
Phone: 815.385.1778 | Toll Free: 800.728.7805 | Fax: 815.385.1781 | HRGreen.com
ILLINOIS PROFESSIONAL DESIGN FIRM #184-001322

PROJECT ENGINEER: J. STRZALKA
PROJECT MANAGER: A. CHAUDHRY

CONTRACT NO. 63724

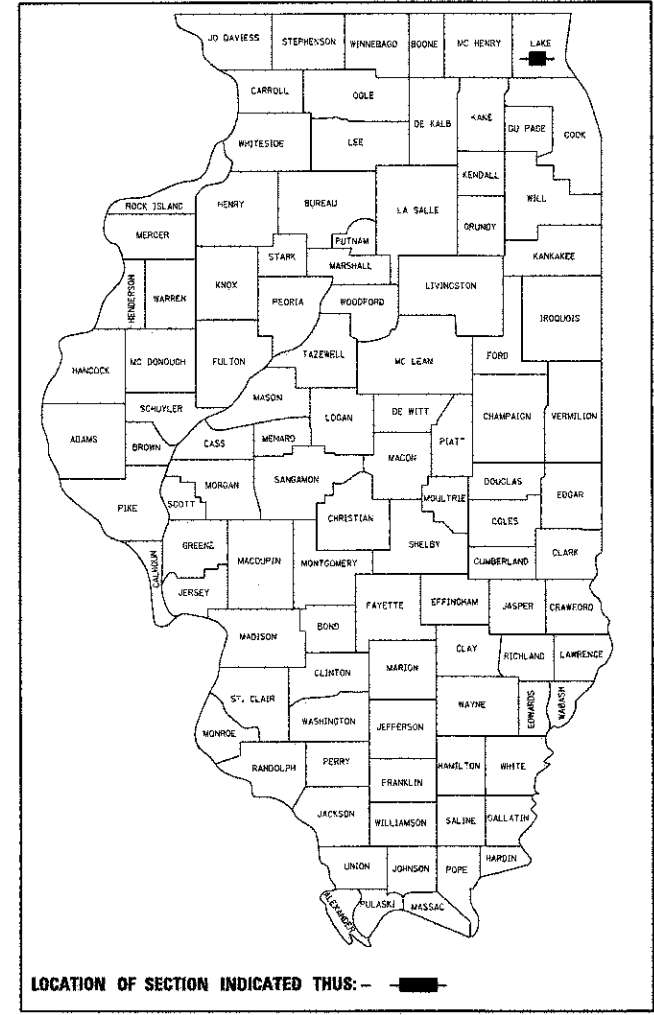
PROJECT LOCATION MAP
FREMONT TOWNSHIP
N.T.S.

RANGE 10 EAST 3RD PM



END PROJECT
STA 126+23

BEGIN PROJECT
STA 121+11



STATE OF ILLINOIS
DEPARTMENT OF TRANSPORTATION
DIVISION OF HIGHWAYS

APPROVED 5/18 2012
Will Combs
VILLAGE OF MUNDELEIN

PASSED MAY 22, 2012
C. H. H. H.
DISTRICT ONE ENGINEER OF LOCAL ROADS AND STREETS

RELEASING FOR BID
BASED ON LIMITED REVIEW MAY 24, 2012
Diana M. O'Keefe
DEPUTY DIRECTOR OF HIGHWAYS, REGION ONE ENGINEER

PROFESSIONAL ENGINEER'S SIGN & SEAL

Akram Chaudhry
AKRAM CHAUDHRY, P.E.
EXPIRES: 11-30-2013

**PRINTED BY THE AUTHORITY
OF THE STATE OF ILLINOIS**

PROGRAM AND OFFICE ENGINEER: CHARLES F. RIDDLE, P.E. 847-705-4406 SCHAUMBURG, IL

COMPANY NAME: HRGreen
PROJECT CONTACT: BILL EMERICH
CLIENT: VILLAGE OF MUNDELEIN
DATE PLOTTED: 5/18/2012 10:40:00 AM
PLOTTER: HP DesignJet 5000
SCALE: AS SHOWN
PEN TABLE: