

F.A. RTE.	SECTION	COUNTY	TOTAL SHEETS	SHEET NO.
VAR.	6(I-1);1(I-1)	PERRY	9	1
		ILLINOIS	CONTRACT NO. 78322	

STATE OF ILLINOIS  
DEPARTMENT OF TRANSPORTATION  
DIVISION OF HIGHWAYS

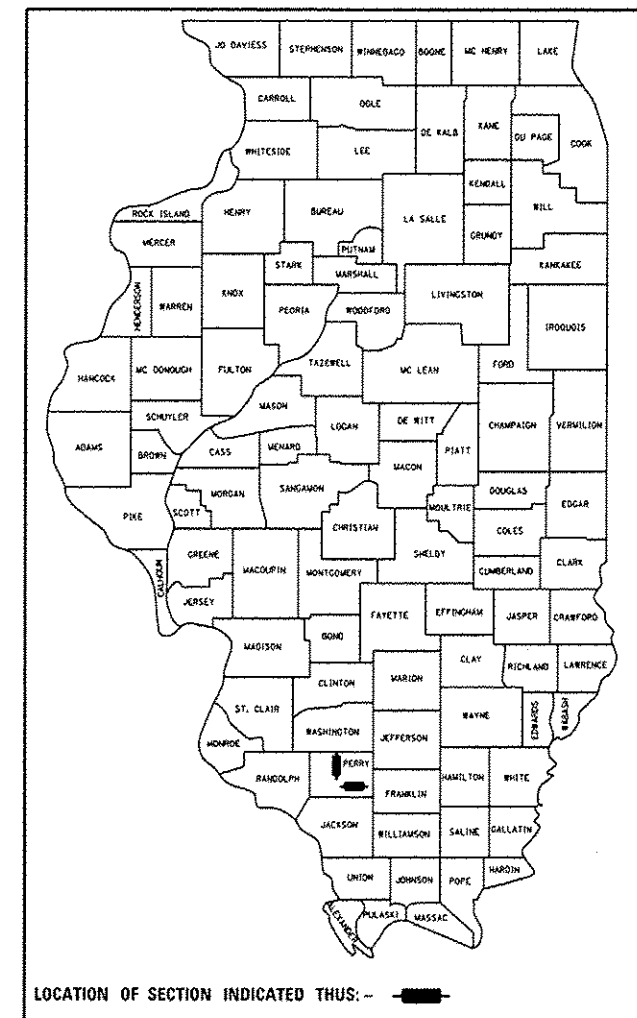
**PROPOSED  
HIGHWAY PLANS**

FAP 322 (US 51) & FAP 869 (IL 14)  
SECTION 6(I-1);1(I-1)

**CULVERT REPLACEMENTS  
PERRY COUNTY**

C-99-053-12

D-99-046-12



FOR INDEX OF SHEETS, SEE SHEET NO. 2

**TRAFFIC DATA**

**IL 14 TRAFFIC DATA**

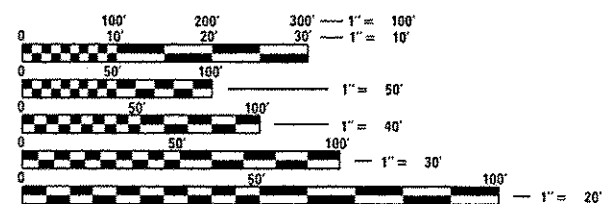
2011 ADT = 3400  
10% TRUCKS

**US 51 TRAFFIC DATA**

2011 ADT = 2100  
14% TRUCKS

**TOWNSHIP**

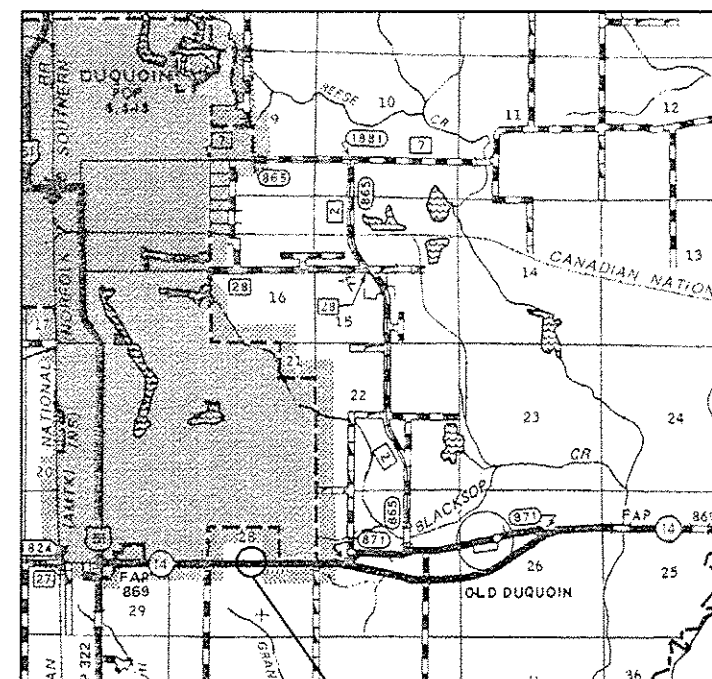
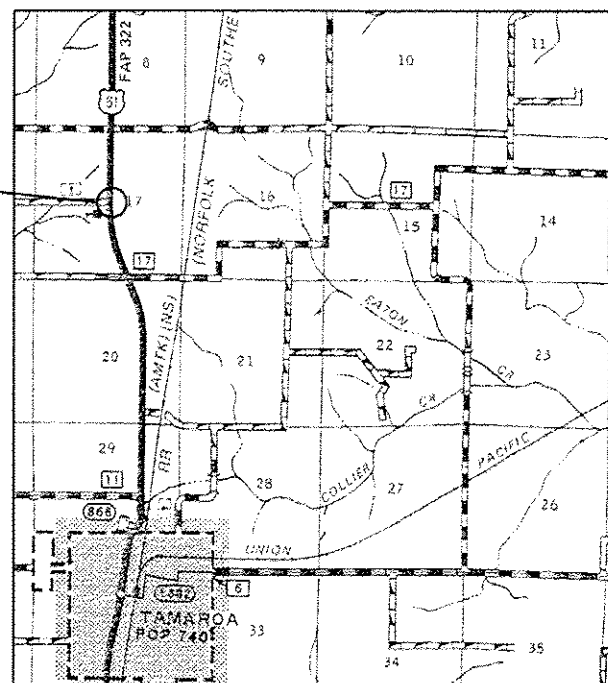
COUNTY UNIT ROAD DISTRICT



FULL SIZE PLANS HAVE BEEN PREPARED USING STANDARD ENGINEERING SCALES. REDUCED SIZED PLANS WILL NOT CONFORM TO STANDARD SCALES. IN MAKING MEASUREMENTS ON REDUCED PLANS, THE ABOVE SCALES MAY BE USED.

J.U.L.I.E.  
JOINT UTILITY LOCATION INFORMATION FOR EXCAVATION  
1-800-892-0123  
OR 811

PROJECT LOCATION  
073-7075  
STA 241+50



PROJECT LOCATION  
073-7019  
STA 63+07

PROJECT ENGINEER: T. WAYNE HALSTEAD  
PROJECT MANAGER: DAVID PICHE

GROSS LENGTH = 36 FT.  
NET LENGTH = 36 FT.

CONTRACT NO. 78322

STATE OF ILLINOIS  
DEPARTMENT OF TRANSPORTATION  
DIVISION OF HIGHWAYS

SUBMITTED May 16 20 12  
Chris Carmanis  
DEPUTY DIRECTOR OF HIGHWAYS, REGION ENGINEER

June 29 20 12  
John D. Baranzolli P.E. Ia  
acting ENGINEER OF DESIGN AND ENVIRONMENT

June 29 20 12  
William R. Frey Ia  
acting DIRECTOR OF HIGHWAYS, CHIEF ENGINEER

**PRINTED BY THE AUTHORITY  
OF THE STATE OF ILLINOIS**