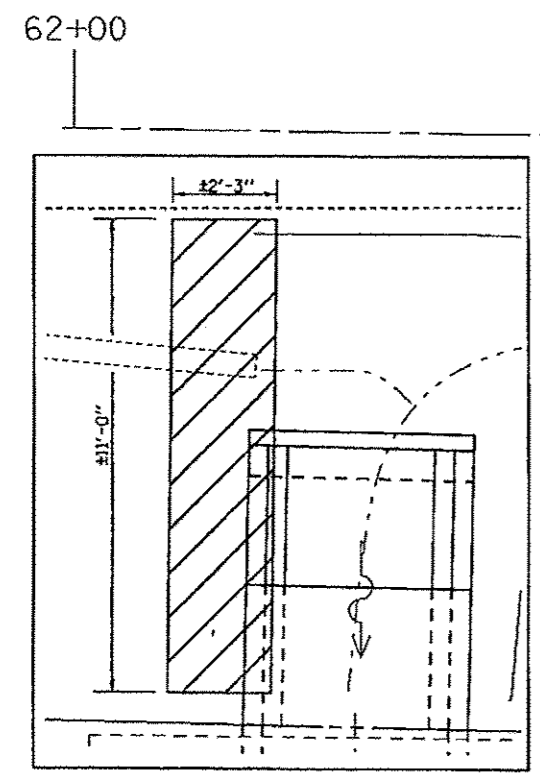
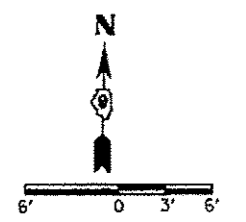
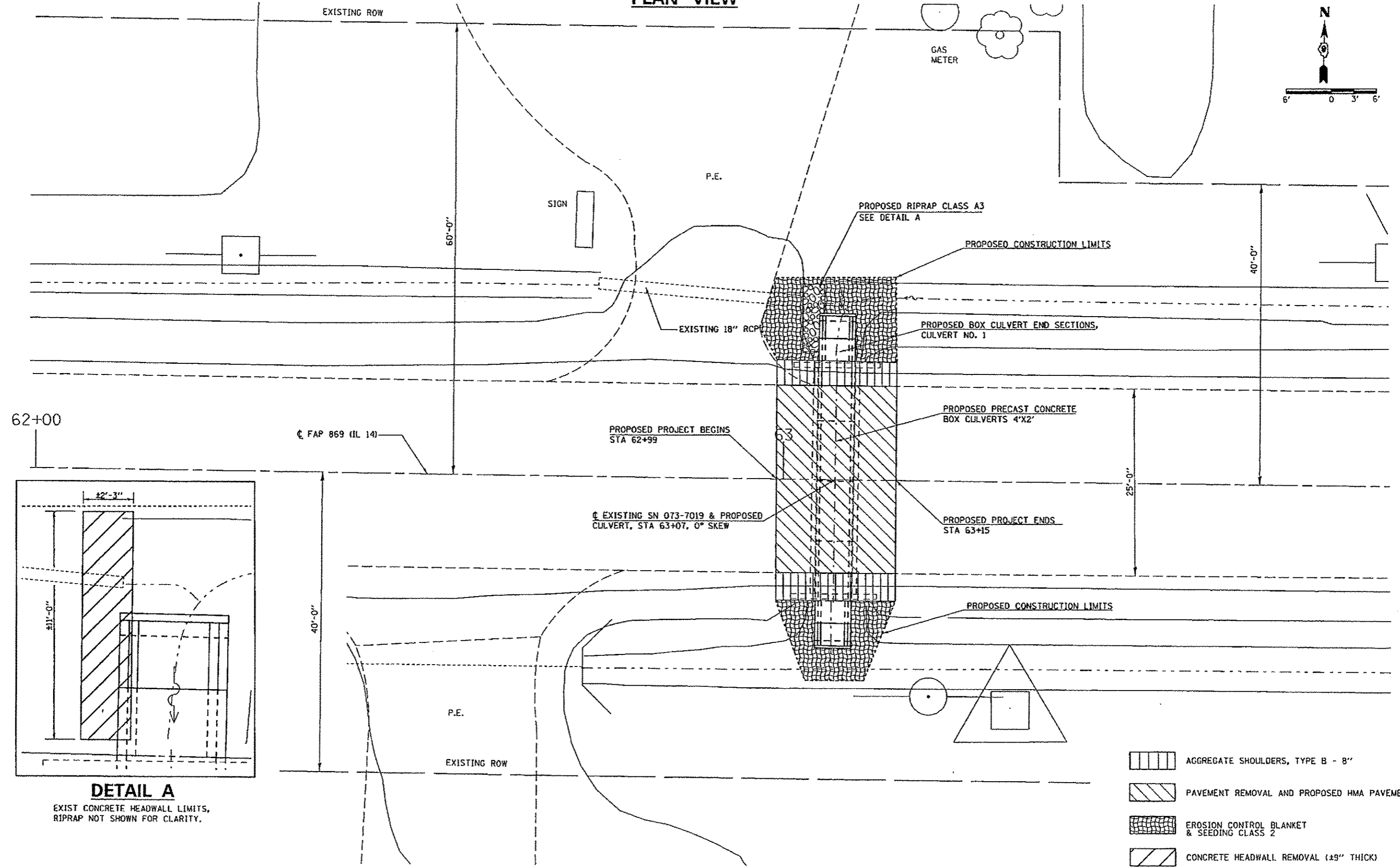


PLAN VIEW



DETAIL A
EXIST CONCRETE HEADWALL LIMITS,
RIPRAP NOT SHOWN FOR CLARITY.

- AGGREGATE SHOULDERS, TYPE B - 8"
- PAVEMENT REMOVAL AND PROPOSED HMA PAVEMENT
- EROSION CONTROL BLANKET & SEEDING CLASS 2
- CONCRETE HEADWALL REMOVAL (±9" THICK)

FILE NAME =	USER NAME = halsteadtw	DESIGNED - TWH	REVISED -
ct\pwwork\pwwork\halsteadtw\0838877117	S22-shr-plan.dgn	DRAWN - TWH	REVISED -
SH1.PLAN	PLDT SCALE = 12.0000' / 1"	CHECKED -	REVISED -
	PLDT DATE = 5/16/2012	DATE -	REVISED -

**STATE OF ILLINOIS
DEPARTMENT OF TRANSPORTATION**

**GENERAL PLAN
EXISTING SN 073-7019**

SCALE: SHEET OF SHEETS STA. TO STA.

F.A.P. RTE.	SECTION	COUNTY	TOTAL SHEETS	SHEET NO.
869	6(I-1111-1)	PERRY	9	4
CONTRACT NO. 78322				
ILLINOIS FED. AID PROJECT				