

STATE OF ILLINOIS
DEPARTMENT OF TRANSPORTATION
DIVISION OF HIGHWAYS

**PROPOSED
HIGHWAY PLANS**

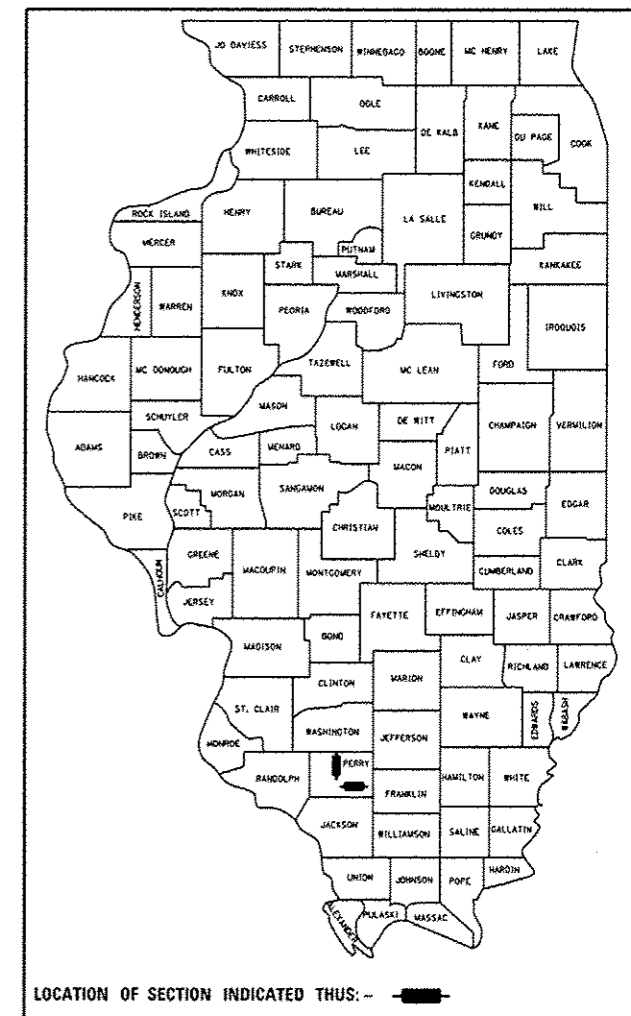
FAP 322 (US 51) & FAP 869 (IL 14)
SECTION 6(I-1);1(I-1)

**CULVERT REPLACEMENTS
PERRY COUNTY**

C-99-053-12

F.A. RTE.	SECTION	COUNTY	TOTAL SHEETS	SHEET NO.
VAR.	6(I-1);1(I-1)	PERRY	9	1
		ILLINOIS	CONTRACT NO. 78322	

D-99-046-12



FOR INDEX OF SHEETS, SEE SHEET NO. 2

TRAFFIC DATA

IL 14 TRAFFIC DATA

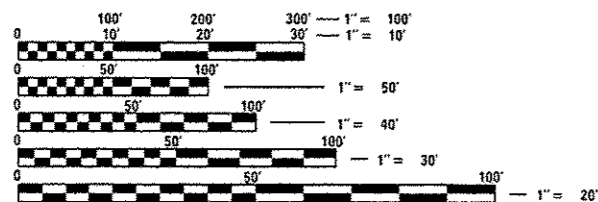
2011 ADT = 3400
10% TRUCKS

US 51 TRAFFIC DATA

2011 ADT = 2100
14% TRUCKS

TOWNSHIP

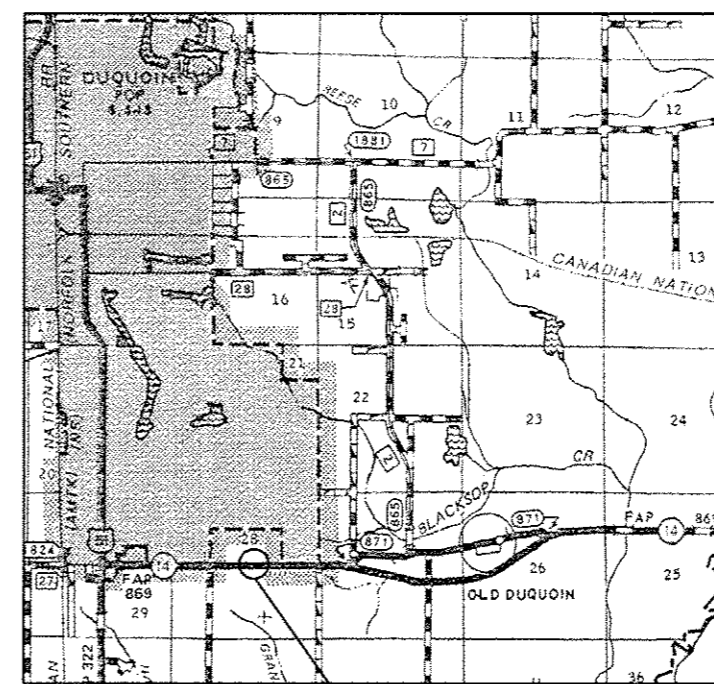
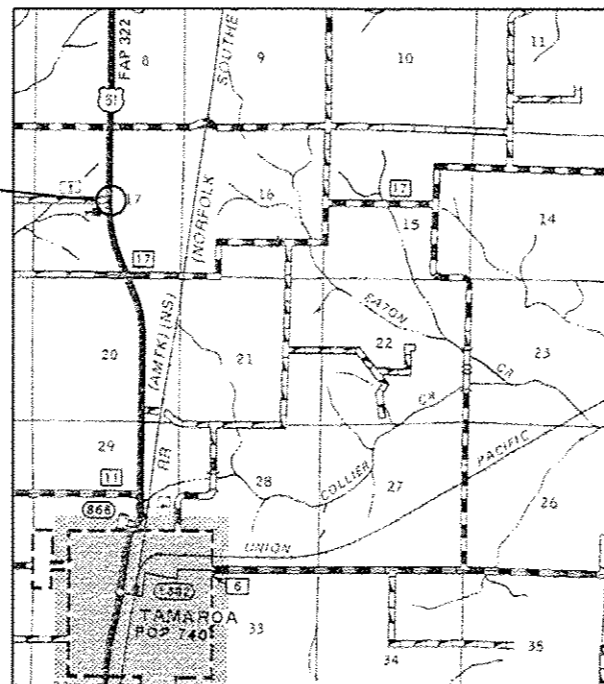
COUNTY UNIT ROAD DISTRICT



FULL SIZE PLANS HAVE BEEN PREPARED USING STANDARD ENGINEERING SCALES. REDUCED SIZED PLANS WILL NOT CONFORM TO STANDARD SCALES. IN MAKING MEASUREMENTS ON REDUCED PLANS, THE ABOVE SCALES MAY BE USED.

J.U.L.I.E.
JOINT UTILITY LOCATION INFORMATION FOR EXCAVATION
1-800-892-0123
OR 811

PROJECT LOCATION
073-7075
STA 241+50



PROJECT LOCATION
073-7019
STA 63+07

PROJECT ENGINEER: T. WAYNE HALSTEAD
PROJECT MANAGER: DAVID PICHE

GROSS LENGTH = 36 FT.
NET LENGTH = 36 FT.

CONTRACT NO. 78322

STATE OF ILLINOIS
DEPARTMENT OF TRANSPORTATION
DIVISION OF HIGHWAYS

SUBMITTED May 16 20 12
Chris Carmanis
DEPUTY DIRECTOR OF HIGHWAYS, REGION ENGINEER

June 29 20 12
John D. Baranzolli P.E. /a
acting ENGINEER OF DESIGN AND ENVIRONMENT

June 29 20 12
William B. Frey /a
acting DIRECTOR OF HIGHWAYS, CHIEF ENGINEER

**PRINTED BY THE AUTHORITY
OF THE STATE OF ILLINOIS**

GENERAL NOTES

- 1) THE THICKNESS OF HOT-MIX ASPHALT MIXTURE SHOWN ON THE PLANS IS THE NOMINAL THICKNESS. DEVIATIONS FROM THE NOMINAL THICKNESS WILL BE PERMITTED WHEN SUCH DEVIATIONS OCCUR DUE TO IRREGULARITIES IN THE EXISTING SURFACE OR BASE ON WHICH THE HOT-MIX ASPHALT MIXTURE IS PLACED.
- 2) FACTORS USED FOR ESTIMATING PLAN QUANTITIES ARE AS FOLLOWS AND SHALL NOT BE USED FOR THE BASIS OF FINAL QUANTITIES:
 ALL HOT-MIX ASPHALT: 2.016 TONS / CU YD
 HOT-MIX ASPHALT MATERIALS ON PAVEMENT: 0.09 GAL / SQ YD
 AGGREGATE (PRIME COAT): 0.0015 TONS / SQ YD
 ALL AGGREGATE: 2.05 TONS / CU YD
 RIP RAP: 1.50 TONS / CU YD
- 3) AT ALL LOCATIONS WHERE EXISTING HOT-MIX ASPHALT OR CONCRETE PAVEMENT JOINS AN EXISTING HOT-MIX ASPHALT OR CONCRETE PAVEMENT, A FULL DEPTH SAWED JOINT SHALL BE CONSTRUCTED. THE COST OF THIS JOINT WILL BE INCLUDED IN THE COST OF THE TYPE OF PAVEMENT BEING CONSTRUCTED.
- 4) THE CONTRACTOR MAY USE P.C.C. PAVEMENT 10' IN LIEU OF THE HMA PAVEMENT SHOWN IN THE PLANS, NO ADDITIONAL COMPENSATION WILL BE ALLOWED. A CALCIUM CHLORIDE ACCELERATOR WILL BE ALLOWED. THE CONCRETE SHALL BE CLASS PP-1 OR PP-2 PER ARTICLE 1020 OF THE STANDARD SPECS.
- 4) COMMITMENTS: NONE AS OF MAY 17, 2012

MIXTURE REQUIREMENTS

LOCATION(S):	HOT-MIX ASPHALT SURFACE COURSE
MIXTURE USE(S):	HOT-MIX ASPHALT SURFACE COURSE, MIX C, N90
AC/PG:	PG64-22
RAP% (MAX):	10%
DESIGN AIR VOIDS:	4.0%, 90 GYRATION DESIGN
MIXTURE COMPOSITION: (GRADATION MIXTURE)	IL-9.5 MM OR 12.5 MM
FRICTION AGGREGATE:	C SURFACE

LOCATION(S):	HOT-MIX ASPHALT BINDER COURSE
MIXTURE USE(S):	HOT-MIX ASPHALT BINDER COURSE, N90, IL-19.0
AC/PG:	PG64-22
RAP% (MAX):	10%
DESIGN AIR VOIDS:	4.0%, 90 GYRATION DESIGN
MIXTURE COMPOSITION: (GRADATION MIXTURE)	IL-19.0
FRICTION AGGREGATE:	NONE

INDEX OF SHEETS

- 1 COVER SHEET
- 2 SIGNATURES, STANDARDS, GENERAL NOTES, MIXTURE REQUIREMENTS, & INDEX OF SHEETS
- 3 SUMMARY OF QUANTITIES
- 4 PLAN - SN 073-7019
- 5 DETAILS SN 073-7019
- 6 PLAN - SN 073-7075
- 7 DETAILS SN 073-7075
- 8-9 CIP APRON END SECTION DETAILS SN 073-7075

STANDARDS

- 000001-06 STANDARD SYMBOLS, ABBREVIATIONS, AND PATTERNS
- 001001-02 AREAS OF REINFORCEMENT BARS
- 420601-05 24' PCC PAVEMENT
- 701001-02 OFF-RD OPERATION, 2L, 2W, MORE THAN 15' AWAY
- 701006-03 OFF-RD OPERATION, 2L, 2W, 15' TO EOP
- 701201-04 LANE CLOSURE 2L, 2W DAY ONLY
- 701901-02 TRAFFIC CONTROL DEVICES
- 780001-03 TYPICAL PAVEMENT MARKINGS
- BLR 21-9 TYP. APP. OF TRAFFIC CONTROL DEVICES FOR CONSTR. ON RURAL LOCAL HIGHWAYS.

Prepared By: *Joe Zdenkiewicz*
 DISTRICT STUDIES & PLANS ENGINEER

Examined By: *James E. Egan*
 DISTRICT LAND ACQUISITION ENGINEER

Examined By: *Carrie Nelson*
 DISTRICT PROGRAM DEVELOPMENT ENGINEER

Examined By: *Will Kelly*
 DISTRICT OPERATIONS ENGINEER

Examined By: *Daryl J. Smith*
 DISTRICT CONSTRUCTION ENGINEER

Examined By: *Bruce L. Baker*
 DISTRICT MATERIALS ENGINEER

Approved By: *Omer Amman*
 DEPUTY DIRECTOR OF HIGHWAYS, REGION 5 ENGINEER

DATE: *May 16 2012*

FILE NAME: C:\pwork\products\hls\stds\10200726\78322-tp-073-7019.dgn

USER NAME: hlsstds	DESIGNED: -	REVISED: -	STATE OF ILLINOIS DEPARTMENT OF TRANSPORTATION	MIX REQUIREMENTS, GENERAL NOTES, STANDARDS				F.A.P. RTE.	SECTION	COUNTY	TOTAL SHEETS	SHEET NO.
PLOT SCALE: 1/8" = 1'-0"	DRAWN: -	REVISED: -		SCALE:	SHEET NO. OF SHEETS	STA.	TO STA.	VAR.	6(1-1)(11-1)	PERRY	9	2
PLOT DATE: 5/16/2012	CHECKED: -	REVISED: -		CONTRACT NO. 78322								
	DATE: -	REVISED: -	ILLINOIS FED. AID PROJECT									

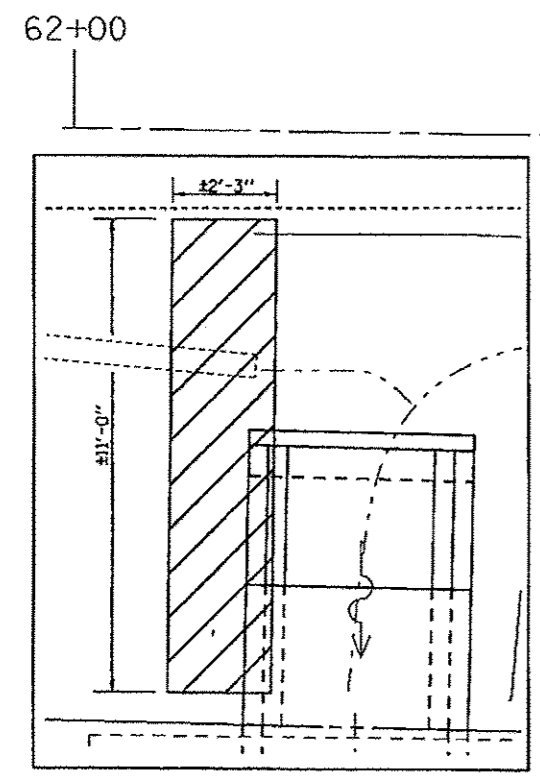
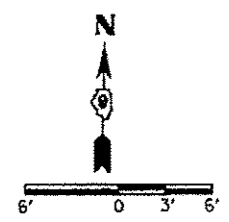
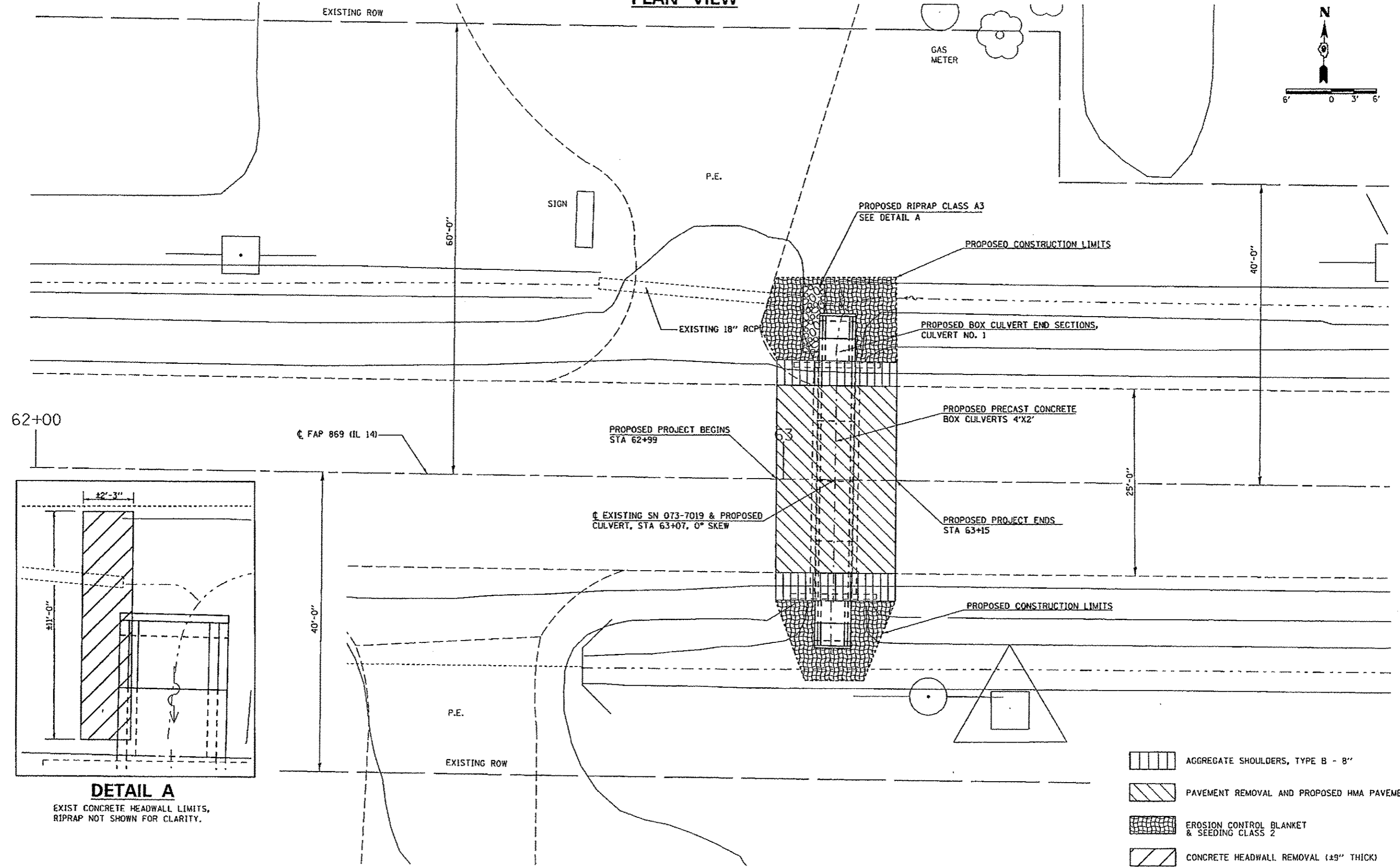
CODE NUMBER	PAY ITEM	CONSTRUCTION TYPE CODE 0040			
		FUNDING 100% STATE			
		UNIT	TOTAL	073-7019	073-7075
20200100	EARTH EXCAVATION	CU YD	85	22	63
20700220	POROUS GRANULAR EMBANKMENT	CU YD	72	27	45
X 25000200	SEEDING, CLASS 2	ACRE	0.25	0.13	0.12
X 25000400	NITROGEN FERTILIZER NUTRIENT	POUND	23	12	11
X 25000500	PHOSPHORUS FERTILIZER NUTRIENT	POUND	23	12	11
X 25000600	POTASSIUM FERTILIZER NUTRIENT	POUND	23	12	11
X 25000700	AGRICULTURAL GROUND LIMESTONE	TON	0.5	0.25	0.25
25100630	EROSION CONTROL BLANKET	SQ YD	62	26	36
28100105	STONE RIPRAP, CLASS A3	SQ YD	25	5	20
28200200	FILTER FABRIC	SQ YD	25	5	20
40603090	HOT-MIX ASPHALT BINDER COURSE, IL-19, N90	TON	61	28	33
40603320	HOT-MIX ASPHALT SURFACE COURSE, MIX "C", N90	TON	9	4	5
40800010	BITUMINOUS MATERIALS (PRIME COAT)	GALLON	9	4	5
44000100	PAVEMENT REMOVAL	SQ YD	99	45	54

CODE NUMBER	PAY ITEM	CONSTRUCTION TYPE CODE 0040			
		FUNDING 100% STATE			
		UNIT	TOTAL	073-7019	073-7075
48101600	AGGREGATE SHOULDERS, TYPE B 8''	SQ YD	32	18	14
50102400	CONCRETE REMOVAL	CU YD	41	14	27
50104400	CONCRETE HEADWALL REMOVAL	EACH	1	1	
50800205	REINFORCEMENT BARS, EPOXY COATED	POUND	440		440
54001001	BOX CULVERT END SECTIONS, CULVERT NO. 1	EACH	2	2	
54003000	CONCRETE BOX CULVERTS	CU YD	8.0		8.0
54010402	PRECAST CONCRETE BOX CULVERTS 4' X 2'	FOOT	32	32	
54010503	PRECAST CONCRETE BOX CULVERTS 5' X 3'	FOOT	48		48
67100100	MOBILIZATION	L SUM	1	0.5	0.5
70100450	TRAFFIC CONTROL AND PROTECTION, STANDARD 701201	L SUM	1	0.5	0.5
70101830	TRAFFIC CONTROL AND PROTECTION, STANDARD BLR 21	L SUM	1	0.5	0.5
70106800	CHANGEABLE MESSAGE SIGN	CAL MO	8	4	4
X 78001110	PAINT PAVEMENT MARKING - LINE 4''	FOOT	90	40	50

X SPECIALTY ITEM

FILE NAME *	USER NAME * halstandla	DESIGNED --	REVISED --	STATE OF ILLINOIS DEPARTMENT OF TRANSPORTATION	SUMMARY OF QUANTITIES			F.A.P. RTE. VAR.	SECTION	COUNTY	TOTAL SHEETS	SHEET NO.
c:\pwwork\lowdot\halstandla\073-7019.dgn	073-7019.dgn	DRAWN --	REVISED --					611-1/2(11-1)	PERRY	9	3	
Default	PLOT SCALE * 1/8"=1'-0"	CHECKED --	REVISED --		SCALE: SHEET OF SHEETS STA. TO STA.			CONTRACT NO. 78322				
	PLOT DATE * 5/21/2012	DATE --	REVISED --		[ILLINOIS] FEO. AID PROJECT							

PLAN VIEW



DETAIL A
EXIST CONCRETE HEADWALL LIMITS,
RIPRAP NOT SHOWN FOR CLARITY.

- AGGREGATE SHOULDERS, TYPE B - 8"
- PAVEMENT REMOVAL AND PROPOSED HMA PAVEMENT
- EROSION CONTROL BLANKET & SEEDING CLASS 2
- CONCRETE HEADWALL REMOVAL (±9" THICK)

FILE NAME =	USER NAME = halsteadtw	DESIGNED - TWH	REVISED -
ct\pwwork\pwwork\halsteadtw\0838877117	S22-shr-plan.dgn	DRAWN - TWH	REVISED -
SHR_PLAN	PLOT SCALE = 12.0000' / 1"	CHECKED -	REVISED -
	PLOT DATE = 5/16/2012	DATE -	REVISED -

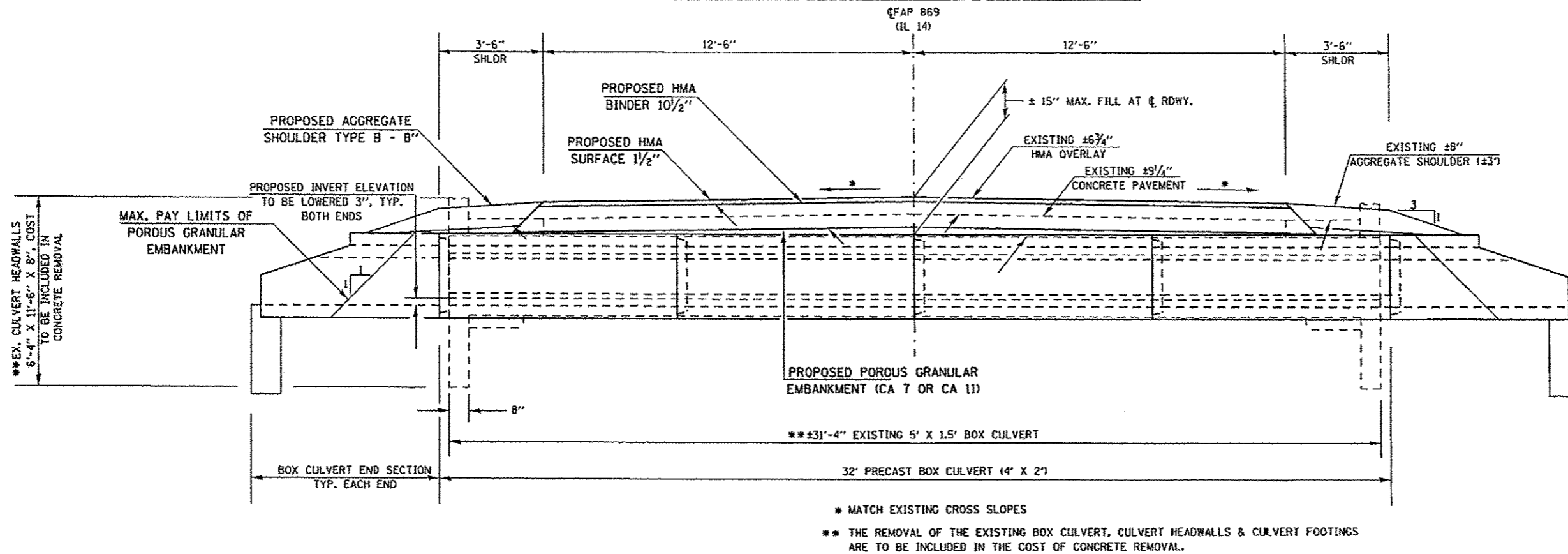
**STATE OF ILLINOIS
DEPARTMENT OF TRANSPORTATION**

**GENERAL PLAN
EXISTING SN 073-7019**

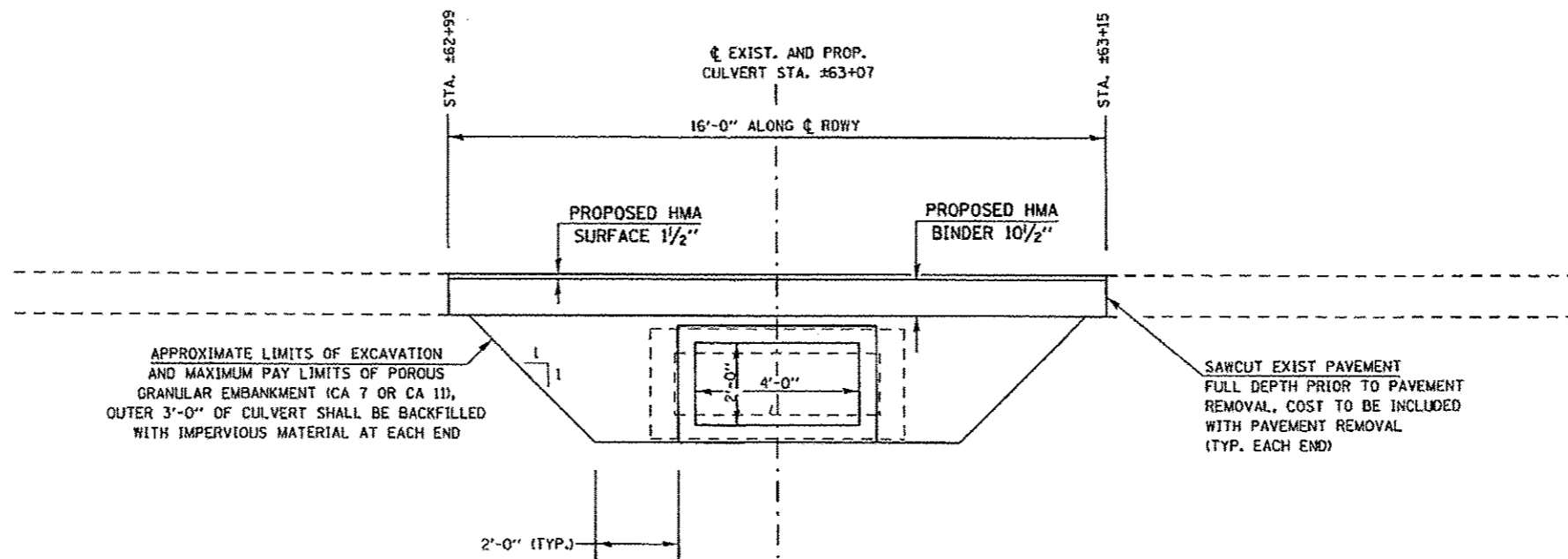
SCALE: SHEET OF SHEETS STA. TO STA.

F.A.P. RTE.	SECTION	COUNTY	TOTAL SHEETS	SHEET NO.
869	6(I-17111-1)	PERRY	9	4
CONTRACT NO. 78322				
ILLINOIS FED. AID PROJECT				

LONGITUDINAL AND TYPICAL SECTION

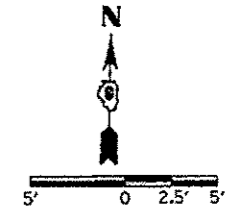


TYPICAL LIMITS OF POROUS GRANULAR EMBANKMENT



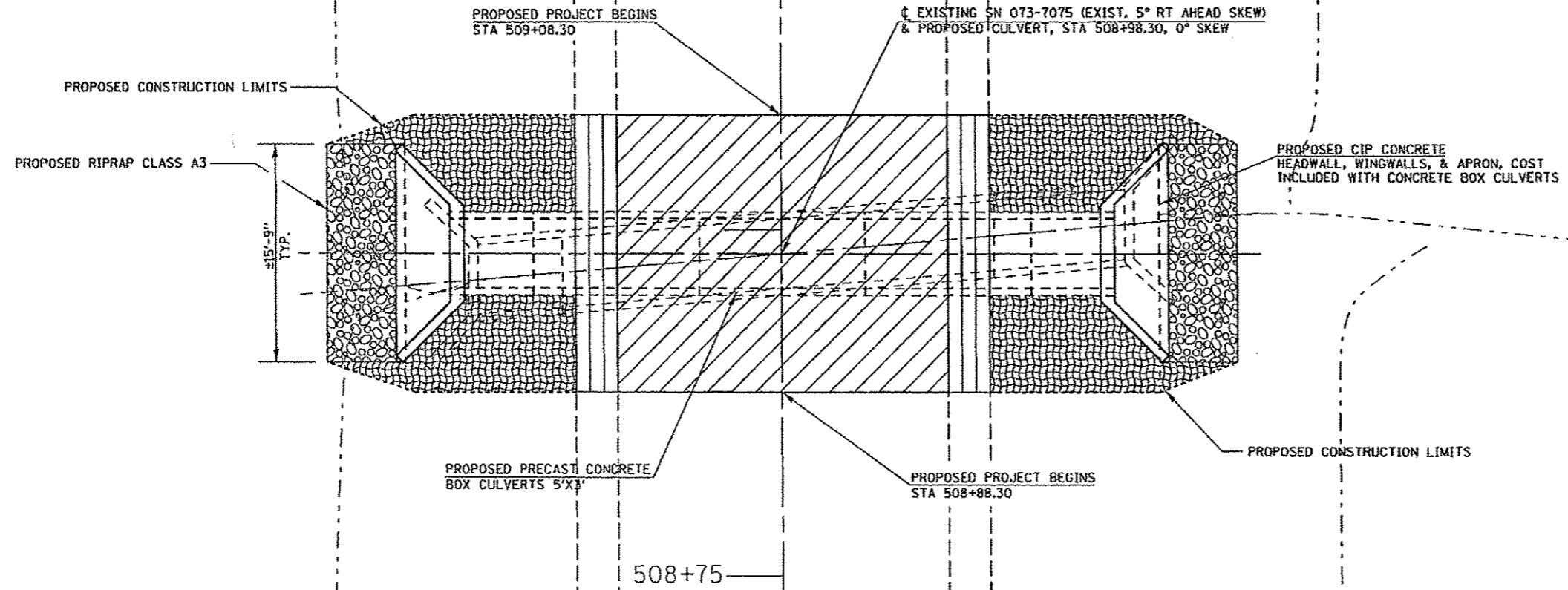
FILE NAME -	USER NAME - holatendw	DESIGNED - TWH	REVISED -	STATE OF ILLINOIS DEPARTMENT OF TRANSPORTATION	SN 073-7019	F.A.P. RTE. 869	SECTION R(1-1)(1-1)	COUNTY PERRY	TOTAL SHEETS 9	SHEET NO. 5
o:\pwwork\p\dot\holatendw\08388771\7322-sht-plan.dgn	PLOT SCALE = 4,00000' / 1"	DRAWN - TWH	REVISED -							
SHT_DOUBLE_PLAN	PLOT DATE = 5/15/2012	CHECKED -	REVISED -							
		DATE -	REVISED -							
						SCALE:	SHEET	OF	SHEETS	STA. TO STA.
						ILLINOIS FED. AID PROJECT				


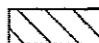

PLAN VIEW



EXIST. ROW

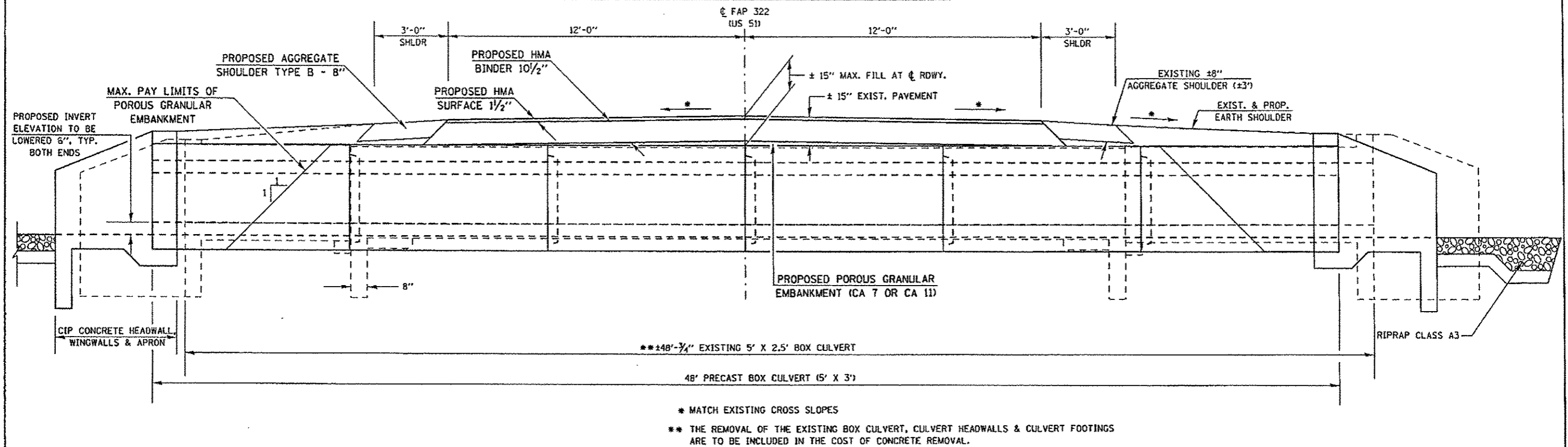
EXIST. ROW



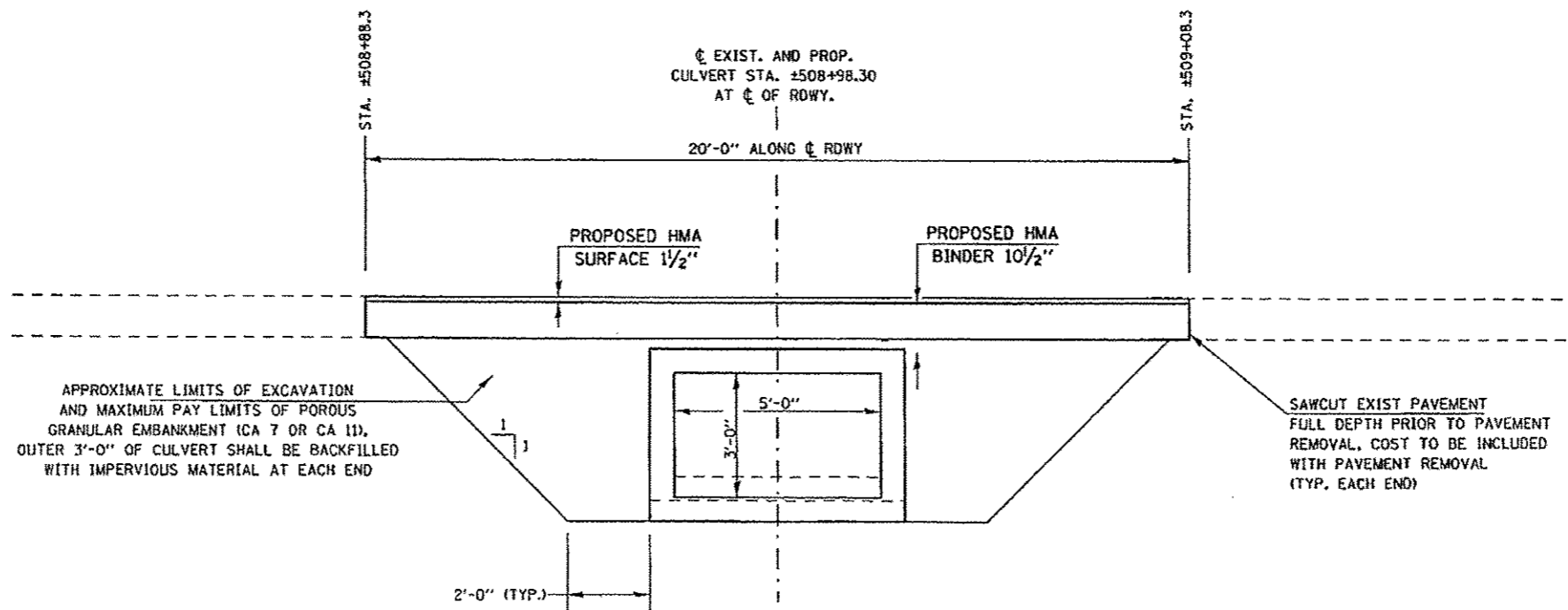
-  AGGREGATE SHOULDERS, TYPE B - 8"
-  PAVEMENT REMOVAL AND PROPOSED HMA PAVEMENT
-  EROSION CONTROL BLANKET & SEEDING CLASS 2

FILE NAME - at\p_w\work\p\p\dot\holstoad\w\0308771\7	USER NAME - holstoadtv	DESIGNED - TWH	REVISED -	STATE OF ILLINOIS DEPARTMENT OF TRANSPORTATION	GENERAL PLAN SN 073-7075			F.A.P. RTE.	SECTION	COUNTY	TOTAL SHEETS	SHEET NO.
	322-ehc-plan.dgn	DRAWN - TWH	REVISED -					322	611-12111-1	PERRY	9	6
	PLOT SCALE = 18.0000 * / 1/4"	CHECKED -	REVISED -					CONTRACT NO. 78322				
	PLOT DATE = 5/18/2012	DATE -	REVISED -					(ILLINOIS) FED. AID PROJECT				
SHT_PLAN				SCALE:	SHEET	OF	SHEETS	STA.	TO	STA.		

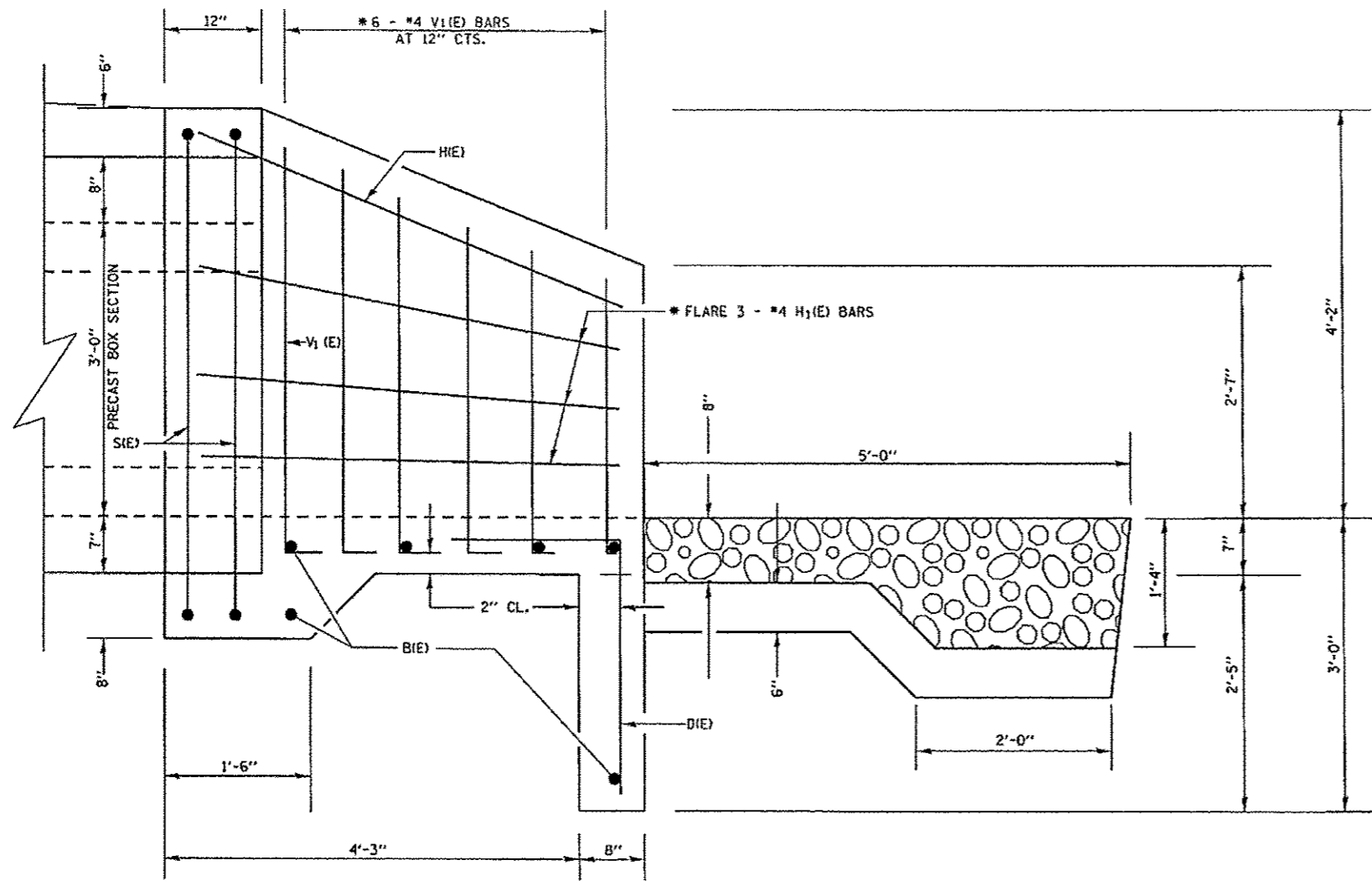
LONGITUDINAL AND TYPICAL SECTION



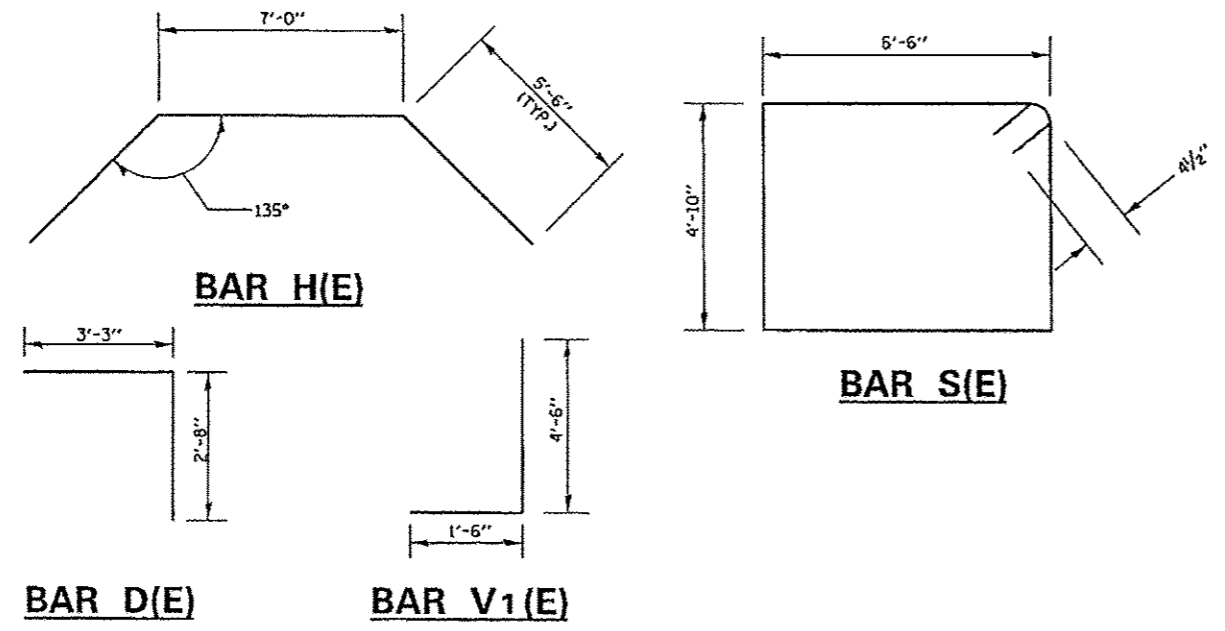
TYPICAL LIMITS OF POROUS GRANULAR EMBANKMENT



FILE NAME	USER NAME • hoistoadw	DESIGNED -	REVISED -	STATE OF ILLINOIS DEPARTMENT OF TRANSPORTATION	SN 073-7075	F.A.P. RTE. 322	SECTION 611-1)(11-1)	COUNTY PERRY	TOTAL SHEETS 9	SHEET NO. 7
SHY.DOUBLE PLAN	PLT SCALE • 4.0000 1/4" IN.	DRAWN -	REVISED -		SCALE:	SHEET	OF	SHEETS	STA.	TO STA.
	PLT DATE • 5/18/2012	CHECKED -	REVISED -							
		DATE -	REVISED -							
										CONTRACT NO. 78322 ILLINOIS FED. AID PROJECT



HALF SIDE ELEVATION



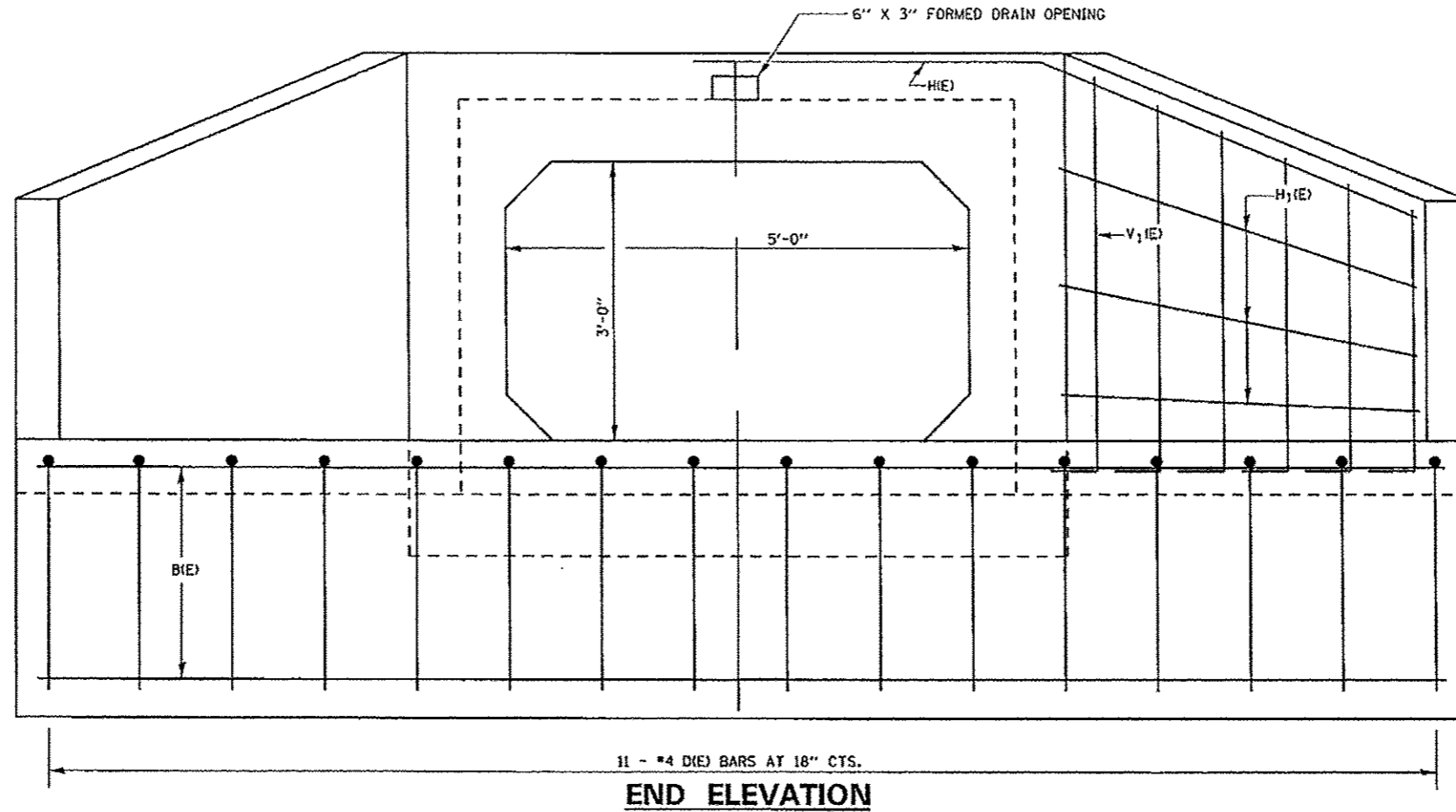
BILL OF MATERIAL (BOTH APRONS)

Bar	No.	Size	Length	Shape	
B(E)	12	#4	15'-5"	—	
D(E)	22	#4	5'-11"	J	
H(E)	2	#4	18'-0"	—	
H ₁ (E)	12	#4	5'-8"	—	
S(E)	4	#4	23'-5"	□	
V ₁ (E)	24	#4	6'-0"	—	
CONCRETE BOX CULVERTS				CU. YD.	8.0
REINFORCEMENT BARS, EPOXY COATED				POUND	440

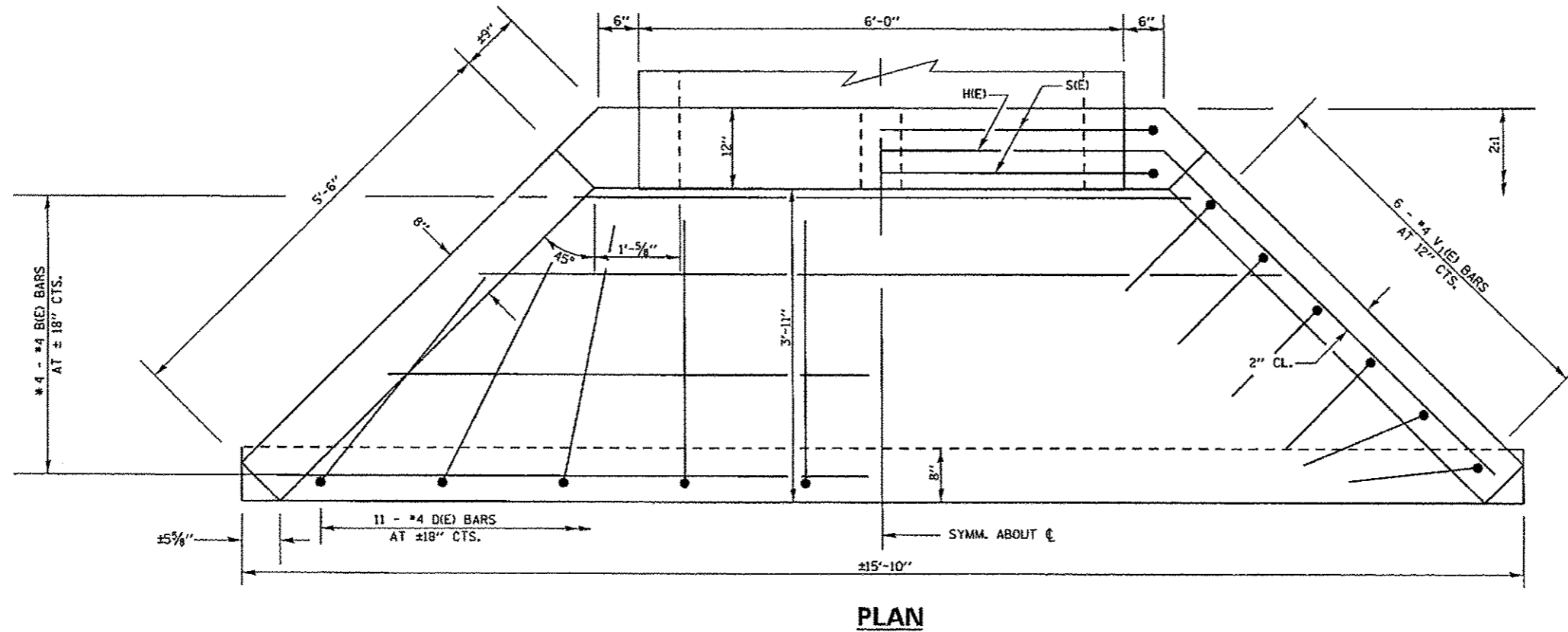
REINFORCEMENT BARS DESIGNATED (E) SHALL BE EPOXY COATED.
 * CUT OR BEND TO FIT
 WORK THIS SHEET WITH SHEET 9 OF 9

**CAST-IN-PLACE
 APRON END SECTION DETAILS
 PERRY COUNTY
 STRUCTURE NO. 073-7075**

1003 / S 7000



* CUT OR BEND TO FIT
 WORK THIS SHEET WITH SHEET 8 OF 9



FILE NAME *	USER NAME * halsteadtw	DESIGNED - TWH	REVISED -	STATE OF ILLINOIS DEPARTMENT OF TRANSPORTATION	CAST-IN-PLACE APRON END SECTION (SN 073-7075)			F.A.P. RTE.	SECTION	COUNTY	TOTAL SHEETS	SHEET NO.
c:\pwwork\pando\halsteadtw\d0300771\7075	322-ahc\plandgn	DRAWN - TWH	REVISED -		322	6(1-1)2(1-1)	PERRY	9	9			
SHT_PLAN	PLOT SCALE = 1/8" = 1'	CHECKED -	REVISED -		SCALE:	SHEET	OF	SHEETS	STA.	TO STA.	CONTRACT NO. 78322	
	PLOT DATE = 5/17/2012	DATE -	REVISED -								ILLINOIS FED. AID PROJECT	