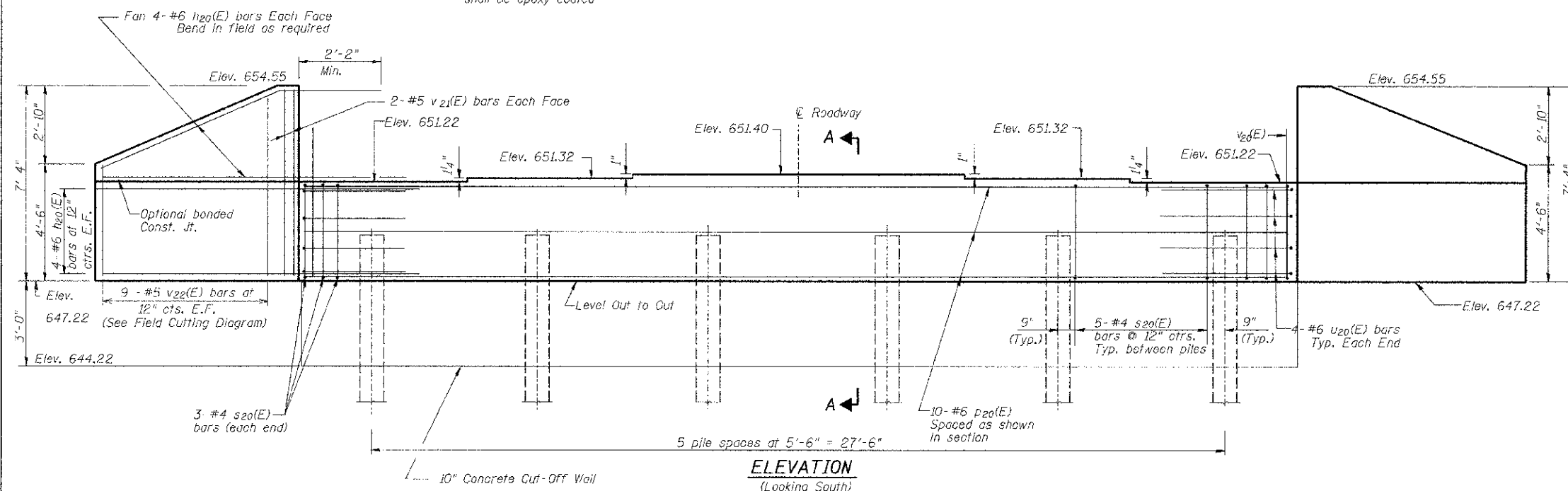


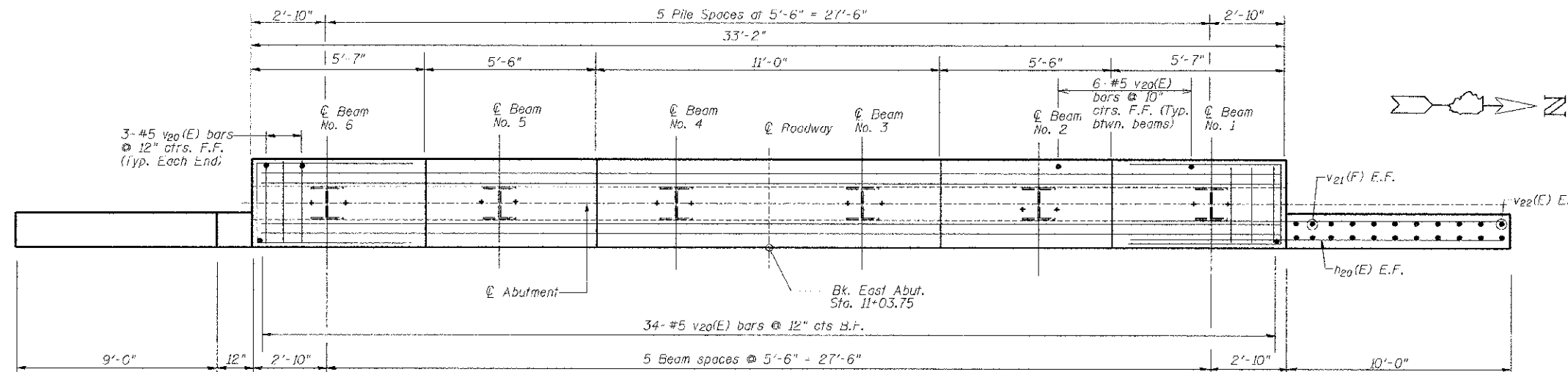
ROUTE NO.	SECTION	COUNTY	TOTAL SHEETS	SHEET NO.
C.H. 16	07-00944-00-BR	CHAMPAIGN	45	23
STA.		TO STA.		
F.H.W.A. REG.		ILLINOIS PROJECT		

Sheet 14 of 21

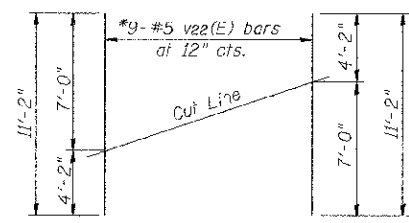
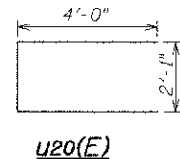
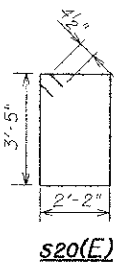
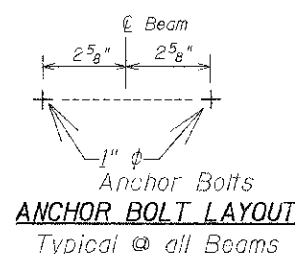
Notes: Pour steps monolithically with cap.  
Reinforcement bars designated (F)  
shall be epoxy coated



**ELEVATION**  
(Looking South)



**PLAN**

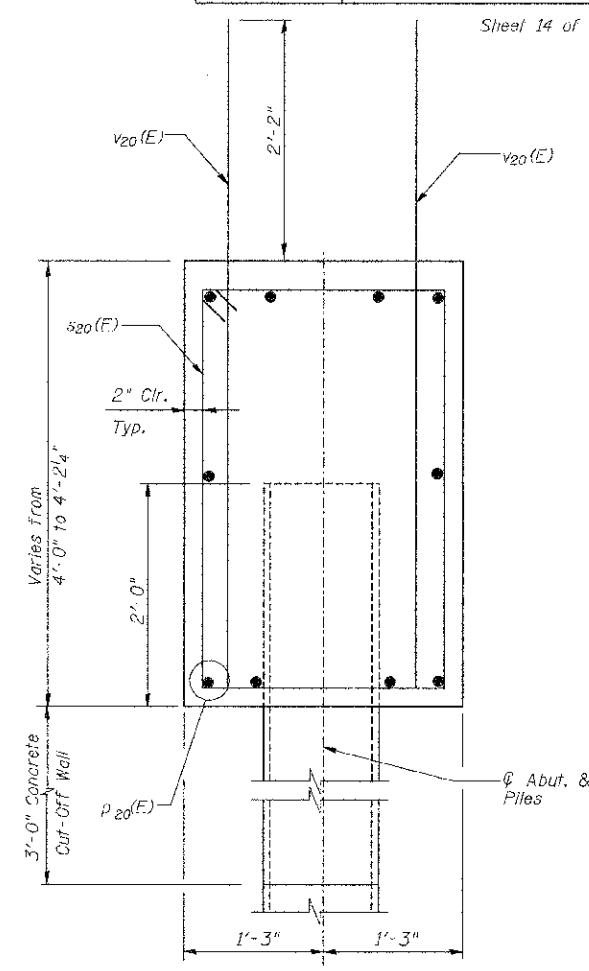


**FIELD CUTTING DIAGRAM**

\* Order v22(E) full length. Cut as shown and use remainder of bars in opposite face.

**PILE DATA**

Type : Steel HP10X42  
Nominal Req'd Bearing : 222 kips  
Allowable Resistance Available : 74 kips  
Est. Length : 46'  
No. Required : 5  
Test Pile : i



**SECTION A-A**

**BILL OF MATERIAL**

Bar No.	Size	Length	Shape
h20(E)	32 #6	12'-6"	—
p20(E)	10 #6	32'-10"	—
s20(E)	31 #4	11'-11"	□
u20(E)	8 #6	10'-1"	—
v20(E)	64 #5	6'-2"	—
v21(E)	8 #5	7'-0"	—
v22(E)	18 #5	11'-2"	—
Structure Excavation	Cu. Yd.	97	
Concrete Structures	Cu. Yd.	17.1	
Reinforcement Bars	Pounds	2180	
Epoxy Coated			
Furnishing Steel Piles	Foot	230	
HP10X42			
Driving Piles	Foot	230	
Concrete Cut-Off Wall	Cu. Yd.	3.1	
Pile Shoes	Each	6	
Test Pile HP10X42	Each	1	

**EAST ABUTMENT**

SECTION: 07-00944-00-BR  
CHAMPAIGN COUNTY  
Q STATION 10+00