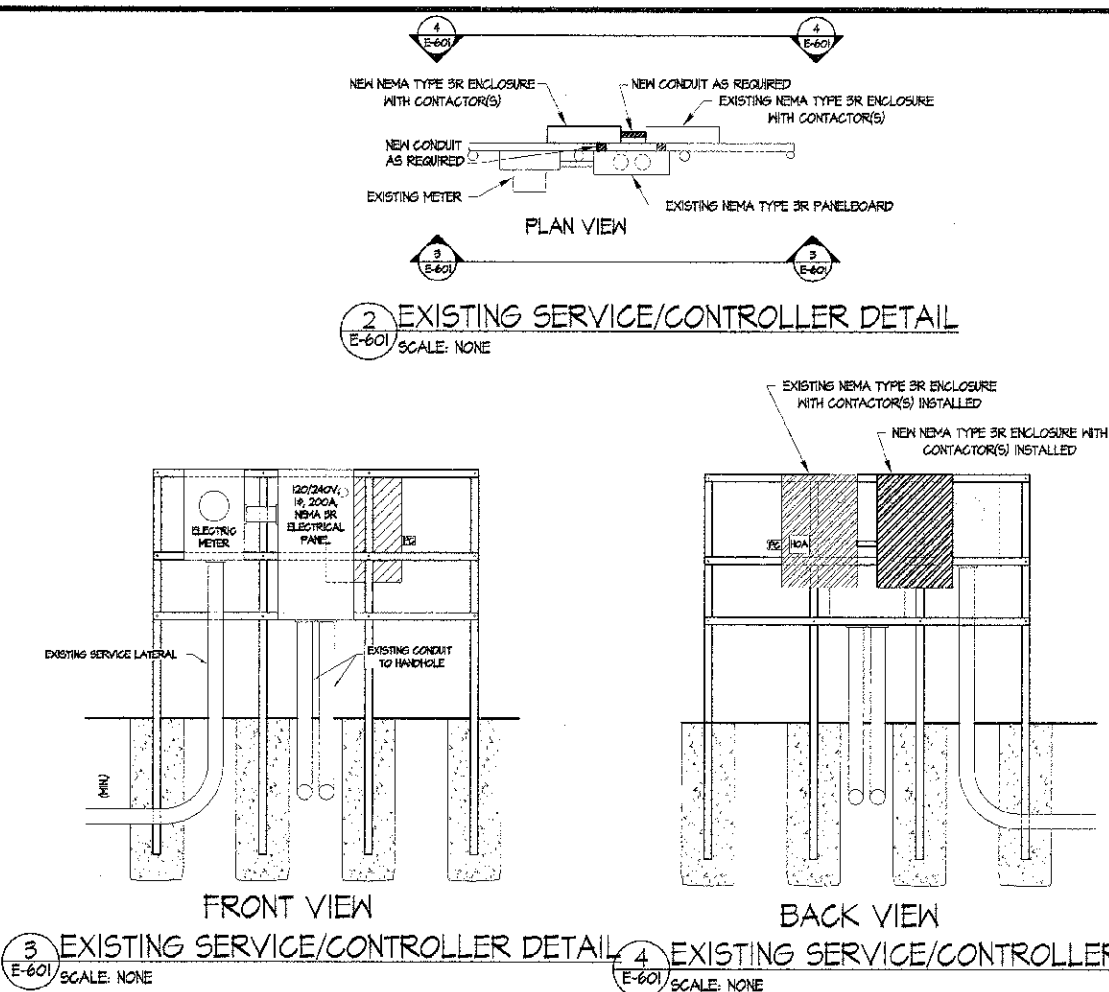


1 LIGHTING PEDESTAL WIRING DIAGRAM - PHASE 2
E-601 SCALE: NONE

SERVICE PEDESTAL WIRING DIAGRAM KEYED NOTES (X)

- CONTRACTOR SHALL EXPAND SYSTEM AS INDICATED. PROVIDE ADDITIONAL NEMA 3R ENCLOSURE AS REQUIRED. ADDITIONAL ENCLOSURE SHALL BE MOUNTED ADJACENT EXISTING EQUIPMENT AND CONTRACTOR SHALL PROVIDE MOUNTING HARDWARE, RACEWAY, STRUCTURAL SUPPORTS AND FASTENING DEVICES REQUIRED FOR A COMPLETE FUNCTIONAL SYSTEM. EXPOSED CONDUIT SHALL BE RIGID GALVANIZED STEEL.
- PROVIDE NEW 12 POLE-SPACE (MINIMUM) CONTACTOR AS REQUIRED. CONTACTOR SHALL BE RATED FOR 30A CIRCUITS MINIMUM. MAKE CONNECTIONS AS INDICATED AND AS REQUIRED FOR COMPLETE FUNCTIONAL SYSTEM.
- MAKE CONNECTIONS TO CONTACTOR AS REQUIRED. CONDUCTORS SHALL BE #8 AWG MINIMUM.
- EXTEND CONTROL CIRCUITRY AS REQUIRED FOR HAND-OFF-AUTO OPERATION OF CONTACTOR.



2 EXISTING SERVICE/CONTROLLER DETAIL E-601 SCALE: NONE
3 EXISTING SERVICE/CONTROLLER DETAIL E-601 SCALE: NONE
4 EXISTING SERVICE/CONTROLLER DETAIL E-601 SCALE: NONE

REVISED PANEL SCHEDULE						
CITY OF BUNKER HILL, WARREN STREET PANEL FOR WASHINGTON STREET LIGHTING						
		120/240 VOLTS 200 AMPS		1 Ø 3 WIRE MAIN BREAKER		
CIRCUIT DESCRIPTION	KVA	AMP		AMP	KVA	CIRCUIT DESCRIPTION
LIGHT POLE #1 RECEPTACLE	1.9	20	1	2	1.9	LIGHT POLE #2 RECEPTACLE
LIGHT POLE #3 RECEPTACLE	1.9	20	3	4	1.9	LIGHT POLE #4 RECEPTACLE
LIGHT POLE #5 RECEPTACLE	1.9	20	5	6	1.9	LIGHT POLE #6 RECEPTACLE
LIGHT POLE #7 RECEPTACLE	1.9	20	7	8	1.9	LIGHT POLE #8 RECEPTACLE
LIGHT POLE #9 RECEPTACLE	1.9	20	9	10	1.9	LIGHT POLE #10 RECEPTACLE
* LIGHT POLE #11 RECEPTACLE	1.2	20	11	12	1.2	LIGHT POLE #12 RECEPTACLE
* LIGHT POLE #15 RECEPTACLE	1.2	20	13	14	1.2	LIGHT POLE #16 RECEPTACLE
* LIGHT POLES #17, 19 & 21 RECEPTACLE	1.2	20	15	16	1.2	LIGHT POLES #18, 20 & 22 RECEPTACLE
SPARE FOR FUTURE LIGHT POLE RECEPTACLE	--	20	17	18	20	SPARE FOR FUTURE LIGHT POLE RECEPTACLE
SPARE FOR FUTURE LIGHT POLE RECEPTACLE	--	20	19	20	--	SPARE FOR FUTURE LIGHT POLE RECEPTACLE
SPARE FOR FUTURE LIGHT POLE RECEPTACLE	--	20	21	22	--	SPARE FOR FUTURE LIGHT POLE RECEPTACLE
SPARE FOR FUTURE LIGHT POLE RECEPTACLE	--	20	23	24	--	SPARE FOR FUTURE LIGHT POLE RECEPTACLE
SPARE FOR FUTURE LIGHT POLE RECEPTACLE	--	20	25	26	--	SPARE FOR FUTURE LIGHT POLE RECEPTACLE
LIGHTING POLES #1-10 (PHASE 1)	5.0	20	27	28	--	SPARE FOR FUTURE LIGHTS
	--	--	29	30	--	
* LIGHTING POLES #11-22 (PHASE 2)	5.6	20	31	32	--	BLANK
	--	--	33	34	--	BLANK
BLANK	--	--	35	36	--	BLANK
BLANK	--	--	37	38	--	BLANK
BLANK	--	--	39	40	--	BLANK
BLANK	--	--	41	42	--	BLANK
CONNECTED LOAD: 33.6 KVA		140.0 AMPS			DEMAND LOAD: 20.5 KVA	85.4 AMPS

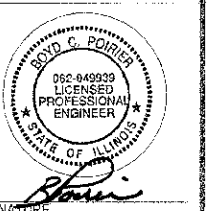
* REVISE PANEL SCHEDULE TO INDICATE NEW CIRCUIT ASSIGNMENTS)

SECTION	COUNTY	TOTAL SHEETS	SHEET NO.
10-00003-01-LT	MACOUPIN	6	5
CITY OF BUNKER HILL		CONTRACT 93580	

HA
HENEGHAN
AND ASSOCIATES, P.C.
ENGINEERS * SURVEYORS
1004 STATE HIGHWAY 16,
JERSEYVILLE, IL
PH: 618-496-6410
DESIGN FIRM NO. 184-002692
EXPIRES APRIL 30, 2013

CONSULTANTS
HR
HURST-ROSCHÉ
ENGINEERS, INC.
PROFESSIONAL DESIGN NUMBER: 184-00098
1400 E. TREMONT
HILLSBORO, IL
PH: 217.532.3959
F: 217.532.3212

Energy Plus
ASSOCIATES
Product Management & Energy Services
6437 STEELECREST LANE
TROY, IL
PH: 618.667.0000
F: 618.667.0001



SIGNATURE: *David G. Poirier*
DATE: 3/30/2012
11/30/2013
LICENSE EXPIRES

BUNKER HILL STREET LIGHTING REPLACEMENT
BUNKER HILL, MACOUPIN COUNTY, ILLINOIS

MARK	DATE	DESCRIPTION

DATE: 03/2012
PROJECT NO: 153-4191
DESIGN: BG DRAWN: BG CHECK: BCP

ELECTRICAL DETAILS

E-601