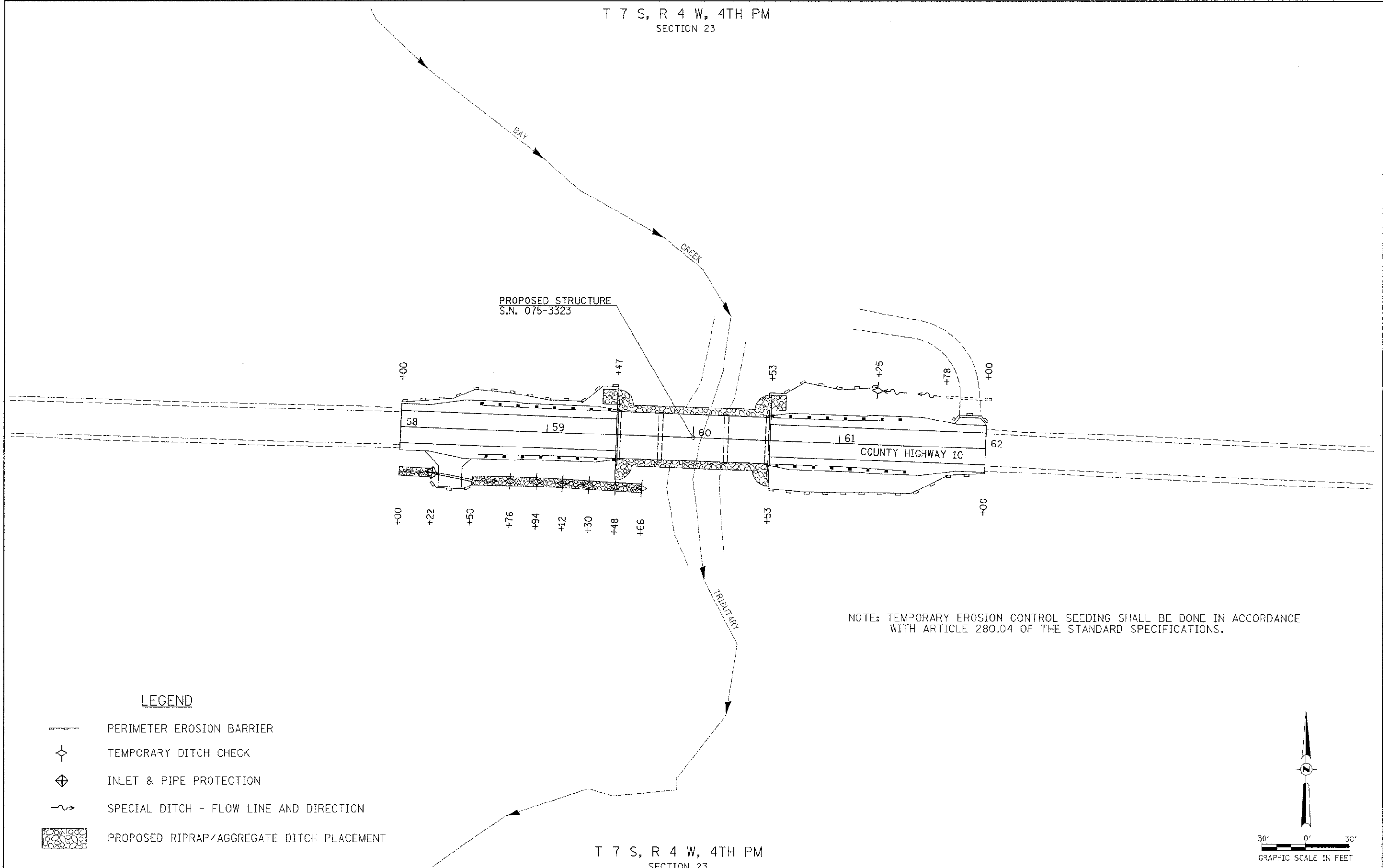

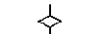

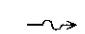
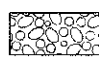


T 7 S, R 4 W, 4TH PM
SECTION 23



NOTE: TEMPORARY EROSION CONTROL SEEDING SHALL BE DONE IN ACCORDANCE WITH ARTICLE 280.04 OF THE STANDARD SPECIFICATIONS.

LEGEND

-  PERIMETER EROSION BARRIER
-  TEMPORARY DITCH CHECK
-  INLET & PIPE PROTECTION
-  SPECIAL DITCH - FLOW LINE AND DIRECTION
-  PROPOSED RIPRAP/AGGREGATE DITCH PLACEMENT

T 7 S, R 4 W, 4TH PM
SECTION 23

FILE NAME = V:\B\dgn\2852-Pike\2852S201.dgn	USER NAME = cthomas	DESIGNED -	REVISED -
		DRAWN -	REVISED -
	PLOT SCALE = 24,925/8" / in.	CHECKED -	REVISED -
	PLOT DATE = 4/24/2012	DATE -	REVISED -

**PIKE COUNTY
COUNTY HIGHWAY 10 OVER
BAY CREEK TRIBUTARY**

EROSION CONTROL PLAN

SCALE: 1"=30' | SHEET NO. 1 OF 1 SHEETS | STA. 58+00.00 TO STA. 62+00.00

F.A.S. R.T.E.	SECTION	COUNTY	TOTAL SHEETS	SHEET NO.
603	10-00085-00-BR	PIKE	23	5
FED. ROAD DIST. NO. 7 ILLINOIS				CONTRACT NO. 93582
FED. AID PROJECT BRS-0603115				

